



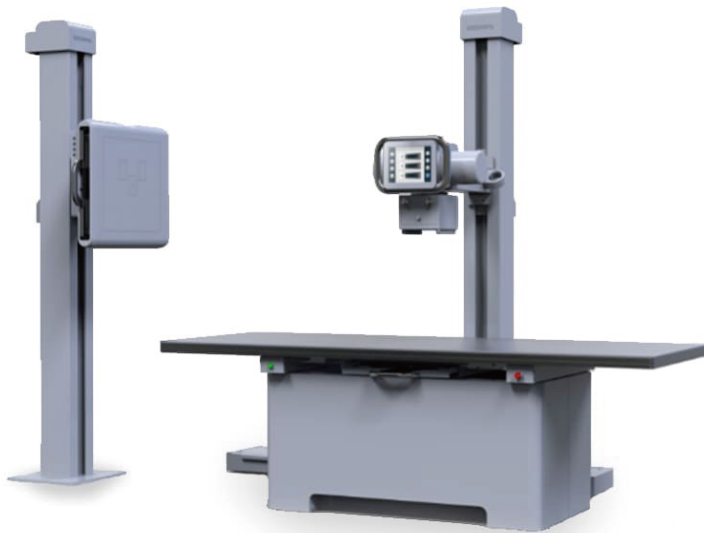
A VOTRE SERVICE DEPUIS 1995

Rue de Taillepie 44 - 1095 Lutry

Tél: +41 21 903 57 67

E-mail: info@healthsport.ch

www.healthsport.ch



AG-Staray 5000

Digital Medical Radiography Systems-Double Column

Amorphous silicon wired flat panel detector

Effective pixels: ≥ 9 million

Pixel matrix: $\geq 3000 \times 3000$ pixels

Mechanical structure: intelligent electric double column

Stand movement mode: electric

Maximum operating frequency: 200kHz

Power: ≥ 50 kW

AG-Staray 5000

Digital Medical Radiography Systems-Z-Arm

Amorphous silicon flat panel detector

Effective pixels: ≥ 9 million

Pixel matrix: $\geq 3070 \times 3070$ pixels

Vertical range(scythe arm): 600mm – 1600mm ($\pm 5\%$)

Rotation range of the scythe arm: -45° – $+135^\circ$ ($\pm 2^\circ$)

Power: ≥ 50 kW

Focus size: ≤ 0.6 mm/1.2mm

Focus power: Small focus: ≥ 20 kW

Large focus: ≥ 50 kW





AG-MPD56A

5.6kw Mobile Digital X-ray Machine

Max. output power: 5.6kW

Working frequency: 80kHz–200kHz

KV range: 40–125kV

mA range: 5–100mA

mAs range: 0.1–320mAs

Exposure time: 0.002–10s

Interface: WiFi, RS232

Power supply: 90–264VAC, 50/60Hz

Battery: 3000mAh

HZSD-3Y-1

Medical PSA Oxygen Plant

Product model: 3, 5, 10, 15, 20, 30, 40, 50, 60Nm³/h

O₂ Potency: $\geq 93\%$ (V/V)

O₂ Dew point: $\leq -43\text{ }^{\circ}\text{C}$

O₂ Pressure: 0.3~0.85 Mpa(adjustable) ≥ 0.1

Operating pressure of the equipment: 0.4–0.8Mpa

Single-phase voltage: 220 \pm 22V

Three-phase voltage: 380 \pm 20V

Supply frequency: 50 \pm 1Hz





AG-BR002C

Seven Functions Electric ICU Hospital Bed With X-ray Bed Board

Electrostatic powder coating for the whole surface, 10-part cold rolled steel plate punching bed board, cold-rolled steel bed frame

Linak Motor from Denmark, three column straight lift system

Alarm system

ABS 4-piece big handrails, ABS detachable headboard and footboard, embedded handrail operator

Electronic weighing system accurate to 0.01kg, with memory function, operation easily

CPR board quick release

Continue working for 8 hours without battery support

Foot-operated brake control system, four 125mm double silent castors

ABS shell one time formed dust cover, angle indicator

One-button electric CPR

One-button reset

One-button chair (similar to TV-position)

Night light

With weighing scale

Color: blue, wooden, wine red, green



AG-BY003C

Five Functions ABS Medical Electric Automatic Hospital Bed

Backrest max upward angle: 75°

Footrest max upward angle: 45°

Height adjustment: 480–760mm

Trendelenburg: 12°

Anti-trendelenburg: 12°

Features:

Overall size (L*W*H): 2200*1100*480–760mm

Durable frame: made of cold-rolled steel plate, treated by electro-coating and powder-coating

Detachable ABS headboard

4-part detachable ABS bedboards

Detachable ABS handrails

Quiet and robust electric actuators provide reliable operation

Remote handset control of all electrically operated functions and movements

Fully tested sturdy construction capable of taking a maximum user weight of up to 250kg

Central-controlled braking system

Double-side silent wheels, $\phi 125\text{mm}$

Motor: imported linak motor from Denmark

With one ss height adjustable I.V pole, with drainage hook

With battery backup

Color: blue, wooden, wine red, green



AG-BR006

Ten Functions Electric ICU Hospital Bed
 Size: 2000–2200*1000*(640–860)mm
 Height adjustment: 640–860mm
 Back Section adjustable: 0–75°
 Knee section adjustable: 0–45°
 Trendelenburg: 0–15°
 Anti-trendelenburg: 0–15°
 Left and right: 0–12°
 Footboard extend function: 2000–2200mm
 Chair function
 CPR function



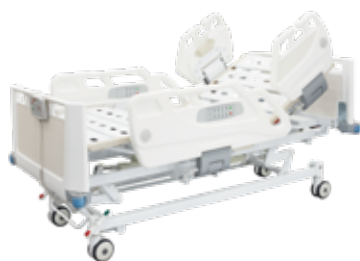
AG-BR001

Eight Functions Electric ICU Hospital Bed
 Size: 2000–2200*1020*525–965mm
 HI-LOW: 525–965mm
 Back section adjustable: 0–75°
 Knee section adjustable: 0–45°
 Trendelenburg: 0–15°
 Anti-trendelenburg: 0–15°
 Length extend: 2000–2200
 Chair function
 Footboard curve function
 CPR function
 Color: blue, wooden, wine red, green



AG-BR002B

Seven Functions ICU Bed with CPR
 Size: 2250*1050*450–790mm
 Height adjustment: 450–790mm
 Back section adjustable: 0–75°
 Knee section adjustable: 0–45°
 Trendelenburg: 0–12°
 Anti-trendelenburg: 0–12°
 Color: blue, wooden



AG-BR005

Seven Functions Electric ICU Bed
 Size: 2230*990*520–760mm
 Backrest max upward angle: 65°
 Footrest max upward angle: 43°
 Height adjustment: 530–710mm
 Trendelenburg: 10°
 Anti-trendelenburg: 10°
 Left tilt: 15°
 Right tilt: 15°
 Color: blue, wooden



A-02

Five Function Electric Hospital ICU Bed
 Size: 2200*980*520–740mm
 Backrest angle: 0–75°+/- 5°
 Legrest angle: 0–40°+/- 5°
 Height adjustable: 520–740mm +/-100mm
 Trendelenburg and reverse angle: 0–12°+/- 2°



AG-BY009

Five Functions Electric ICU Hospital Bed
 Size: 2230*1050*575–815mm
 Height adjustment: 575–815mm
 Back section adjustable: 0–75°
 Knee section adjustable: 0–45°
 Trendelenburg: 0–12°
 Anti-trendelenburg: 0–12°



AG-BY004

Five Function Electric Hospital Bed

Size: 2200*1060*440-760mm

Backrest max upward angle: 75°

Footrest max upward angle: 40°

Height adjustment: 440-760mm

Trendelenburg: 12°

Anti-trendelenburg: 12°

Color: blue, wooden



AG-BY008

Five Function Electric Hospital Bed

Size: 2120*970*450-760mm

Backrest max upward angle: 75°

Footrest max upward angle: 40°

Height adjustment: 520-720mm

Trendelenburg: 12°

Anti-trendelenburg: 12°

Color: white



AG-BM005

Five Functions Electric Hospital Bed

Size: 2000*970*500-750 mm

Backrest max upward angle: 75°

Footrest max upward angle: 40°

Height adjustment: 460-750mm

Trendelenburg: 12°

Anti-trendelenburg: 12°

Color: blue, wooden



AG-BM103

Three Functions Electric Hospital Bed

Size: 2150*980*460-750mm

Backrest max upward angle: 75°

Footrest max upward angle: 40°

Height adjustment: 460-750mm

Color: blue, wooden



AG-BM119

Three Functions Electric Hospital Bed

Size: 2000 * 945 * 505-750mm

Backrest max upward angle: 75°

Footrest max upward angle: 40°

Height adjustment: 460-750mm

Color: wooden



AG-BM100

Three Functions Electric Hospital Bed

Size: 2150*980*250-700mm

Backrest max upward angle: 75°

Footrest max upward angle: 40°

Height adjustment: 250-700mm

Color: wooden



AG-BMY002

Three Functions Hydraulic Hospital Bed

Size: 2130*970*475-780 mm

Backrest max upward angle: 75°

Footrest max upward angle: 40°

Height adjustment: 450-700mm

Color: blue,wooden



AG-BMY001

Three Functions Hydraulic Hospital Bed

Size: 2130*970*475-780 mm

Backrest max upward angle: 75°

Footrest max upward angle: 40°

Height adjustment: 475-780mm

Color: wooden



AG-BY104

Three Functions Manual And Electric Hospital Bed

Size: 2200 * 1060 * 440-760mm

Backrest max upward angle: 75°

Footrest max upward angle: 40°

Height adjustment: 440-760mm

Color: blue



AG-BMS001B

Five Functions Manual Hospital Bed

Size: 2150*950* 380-720mm

Backrest max upward angle: 75°

Footrest max upward angle: 40°

Height adjustment: 500-750mm

Trendelenburg: 12°

Anti-trendelenburg: 12°

Color: blue



AG-BMS001C

Five Functions Manual Hospital Bed

Size: 2150*950*380-720mm

Backrest max upward angle: 75°

Footrest max upward angle: 40°

Height adjustment: 380-720mm

Trendelenburg: 12°

Anti-trendelenburg: 12°

Color: blue,wooden



AG-BMS002B

Three Functions Manual Hospital Bed

Size: 2150*950*460-760mm

Backrest max upward angle: 75°

Footrest max upward angle: 40°

Height adjustment: 460-760mm

Color: blue,wooden



AG-BYS105

Two Functions Manual Hospital Bed
Size: 2160*960*590-750mm
Backrest max upward angle: 75°
Footrest max upward angle: 40°
Color: blue,wooden



AG-BYS106

Two Functions Manual Hospital Bed
Size: 2120*1050*540mm
Backrest max upward angle: 75°
Footrest max upward angle: 40°
Color: blue,wooden



AG-BMS101B

Two Functions Manual Hospital Bed
Size: 2150*980*520mm
Backrest max upward angle: 75°
Footrest max upward angle: 40°
Color: blue,wooden,wine red,green



AG-BYS203

One Function Manual Hospital Bed
Size: 2130*960*540mm
Backrest max upward angle: 75°
Color: blue



AG-BYS204

One Function Manual Hospital Bed
Size: 2130*960*540mm
Backrest max upward angle: 75°
Color: blue,wooden



AG-BMS303

Flat Hospital Bed
Size: 2130*960*540mm
Color: blue



AG-W001

With Ultra Low Function Five Functions
Electric Nursing Hospital Bed

Size: 1900*900*250-650mm
(Lift adjustment)
Adjustable backplane: 0-75°
Adjustable leg plate: 0-35°
Overall forward tilt: 0-13°
Overall backward tilt: 0-13°
CPR function
Safe load: 150-175KG



KYH-DDC05

Electric Hospital Bed
Size: 2130*1130*560mm
Back angle: 0-72°
Roll angle: 0-30°
Color: wooden



AG-W003

Three Functions Manual And Electric
Home Care Bed
Size: 2150*1050*550mm
Backrest max upward angle: 75°
Footrest max upward angle: 45°
Height adjustment: 450-720mm
Color: wooden



A-176

Plus Electric Home Care Nursing Bed
Bed surface with the anti slide and
sideslip plate.
When the bed are in a horizontal
position, can achieve the function of
left and right turn, angle 0-45±5°.
When power off, the handle crank
can be used to operate all the
functions manually.
Product size: 2100*960*500(mm)
Packing size: 2200*1500*550mm
G.W: 170kg



A-29

Three Function Electric Care Bed
Size: 2100*1090*280-700mm
Backrest angle: 0-75°±5°
Legrest angle: 0-45°
Height adjustment: 280-700mm



A-179-1

Multifunctional Manual Homecare Nursing Bed
Size: 2100*960*500mm
Back section: 0-75°±5°
Leg up section: 0-20°±2°
Leg down section: 0-50°±2°
Turn left and right section: 0-45±5°
Chair position



AG-OB001

4-Crank Orthopedic Bed

Size: 2160*990*490mm

Backrest max upward angle: 75°

Right Footrest max upward angle: 40°

Right Footrest max upward angle: 40°

Trendelenburg from 0 to 12°

Color:blue



AG-OB003

Three Functions Hospital Orthopedic Bed
Size: 2170*1100*550mm

Backrest max upward angle: 75°

Right Footrest max upward angle: 40°

Left Footrest max upward angle: 40°

Color:wooden



AG-OB005

Three Functions Hospital Orthopedic Bed

Size: 2160*990*490mm

Backrest max upward angle: 75°

Right Footrest max upward angle: 40°

Left Footrest max upward angle: 40°

Color:wooden



AG-OB004

Two Functions Hospital Orthopedic Bed

Size: 1850*900*500mm

Backrest max upward angle: 75°

Right Footrest max upward angle: 40°



AG-CB001

5-crank Al-alloy handrails Hospital
Children Bed

Size: 1800*820*500mm

Backrest max upward angle: 75°

Color: white



AG-CB003

Steel Frame Children Hospital Bed

Size: 1850*750*500mm

Color: blue



AG-BXG01

Stainless Steel Hospital bed
Size: 2080*950*550-730mm
Backrest max upward angle: 75°
Footrest max upward angle: 40°
Height adjustment: 550-730mm



XD-129

Stainless Steel Hospital Bed
Size: 1900*600*700mm



OLT-606E

Electric Bed
Size: 90*190cm
Color: brown



AG-FB003

Metal Frame Manual Folding
Hospital Bed
Size: 1980*860*400mm
Back section: 0-80°, 6 level
Color: Brown



KX-07

Folding Bed Chair
Size: 1780*670*300mm
Color: navy/silver gray



KX-10

Folding Bed Chair
Size: 1780*670*300mm
Color: black/gray/navy/blue/
orange/red



AG-ET001A1-850mm
Emergency Trolley

Size: 850*520*950mm
Made of high-strength
ABS material



AG-ET014B1
Emergency Trolley

Size: 625*475*920mm
Made of high-strength
ABS material



AG-P3
Emergency Trolley

Size: 680*525*1000mm



AG-NT004B3
Emergency Trolley

Size: 720*470*920mm
Made of high-strength
ABS material



AG-IT006B1
ABS Material IV Treatment
Trolley

Size: 620*475*920mm
Made of high-strength
ABS material, three layers



AG-MT005B1
Medicine Trolley

Size: 625*475*920mm
Made of high-strength
ABS material



AG-MT011A1
Medicine Trolley

Size: 850*520*950mm
Made of high-strength
ABS material



W3952
Medicine Trolley

Size: 850mm*480mm*970mm
Clear ABS file box: 1PC



W3726
Medicine Trolley

Size: 600*500*1000mm
Clear ABS file box: 1PC



W3727
Medicine Trolley

Size: 600*500*930mm
Clear ABS file box: 1PC



AG-LPT006B
Hospital ABS Clinical
Trolley

Size: 750*480*1000mm
Made of high-strength
ABS material



AG-IT001B3
Medical ABS IV
Treatment Trolley

Size: 720*470*920mm
Made of high-strength
ABS material



AG-P1
Clinical Trolley

Size: 680*525*1000mm



AG-P10-T
Transfusion Car

Size: 780*480*980mm
Material: Aluminum, steel ABS



AG-P12
Medical cart

Size: 750*480*920mm
Material: Aluminum, steel ABS



AG-P13
Medical cart

Size: 750*480*920mm
Material: Aluminum, steel ABS



AG-AT007B3
Anesthesia Trolley

Size: 720*470*920mm
Made of high-strength
ABS material



AG-AT001A3
Anesthesia Trolley

Size: 750*480*1340mm
Made of high-strength
ABS material



W3714
Anesthesia Trolley

Size: 740*520*960mm
ABS material



W3715
Anesthesia Trolley

Size: 740*520*960mm
ABS material



W3721
Anesthesia Trolley

Size: 600*500*930mm
ABS material



AG-CHT004
Patient Record Trolley

Size: 410*400*950mm
ABS material



AG-CHT003
Patient Record Trolley

Size: 750*410*980mm
ABS material
Double rows, 50 layers with
2 drawers



AG-WT008
Medical Workstation
Trolley

Lifting load is 12-18kg
Height: 1145mm-1395mm



AG-WT007
Notebook computer
trolley

Height adjustment range for
worksurface: 400±20mm
Worksurface height: 750mm-1150mm,
Lifting load ≤15Kg



AG-WT006
Medical Workstation
Trolley

Height adjustment range for LCD
and worksurface: 400±20mm



AG-MT014A
ABS Medical Workstation
Trolley

1) Size: 660*520*1440mm
2) Made of high-strength ABS material



AG-GS001
Steel Medical Trolley

Material: made of the high quality
cold rolled steel ,
1.2mm thickness steel
Size(L*W*H): 970*620*450mm



AG-GS002
Steel Medical Trolley

Material: made of the high quality
cold rolled steel ,
1.2mm thickness steel
Size(L*W*H): 970*620*460mm



AG-GS003
Steel Medical Trolley

Material: made of the high quality
cold rolled steel ,
1.2mm thickness steel
Size(L*W*H): 970*620*460mm



AG-GS004
Steel Medical Trolley

Material: made of the high quality
cold rolled steel ,
1.2mm thickness steel
Size(L*W*H): 950*630*435mm



AG-GS005
Steel Medical Trolley

Material: made of the high quality
cold rolled steel ,
1.2mm thickness steel
Size(L*W*H): 970*640*460mm



AG-GS006
Steel Medical Trolley

Material: made of the high quality
cold rolled steel ,
1.2mm thickness steel
Size(L*W*H): 970*660*450mm



AG-GS007
Steel Medical Trolley

Material: made of the high quality
cold rolled steel ,
1.2mm thickness steel
Size(L*W*H): 910*510*435mm



AG-GS008
Steel Medical Trolley

Material: made of the high quality
cold rolled steel ,
1.2mm thickness steel
Size(L*W*H): 970*645*470mm



AG-MT025

Steel Medical Trolley

Size: 620*450*900mm



AG-MT026

Steel Medical Trolley

Size: 670*415*890mm



AG-MT027

Steel Medical Trolley

Size: 650*450*855mm



AG-MT028

Steel Medical Trolley

Size: 620*450*875-955mm



AG-MT034B

Steel Medical Trolley

Size: 700*460*960mm



AG-MT035A

Steel Medical Trolley

Size: 600*400*850mm



AG-AT015

Steel Anesthesia Trolley

Size: 600*400*1450mm



AG-AT016

Anesthesia Trolley

Size: 600*400*1450mm



AG-AT017

Anesthesia Trolley

Size: 1000*400*1450mm



AG-AT018

Anesthesia Trolley

Size: 600*400*950mm



AG-AT019

Steel Medical Trolley

Size: 600*400*950mm



AG-AT020

Steel Medical Trolley

Size: 600*400*950mm



AG-ET017-1

Steel Medical Trolley

Size: 630*440*880mm



AG-MT035A

Steel Medical Trolley

Size: 600*400*850mm



AG-CHT011

Patient Record Trolley

Size: 740*410*1059



AG-CHT012

Patient Record Trolley

Size: 410*400*950mm



AG-P21

Treatment Trolley

Size: 780*480*980mm



W3713

Treatment Trolley

Size: 600*400*850mm



W3902

Treatment Trolley

Size: 740mm*520mm*960mm



W3903

Treatment Trolley

Size: 740mm*520mm*960mm



AG-UTA06

Utility Trolley

Size: 539*366*900mm
ABS material, three layers



AG-UTB07

Utility Trolley

Size: 640*456*900mm
ABS material, three layers



AG-LPT005A

Utility Trolley

Size: 760*480*920mm
ABS material, two layers



OM-TCA

Endoscopic Workstation
Trolley

Metal column: integral combination,
free loading and unloading



OM-TCG

Endoscopic Workstation
Trolley

The main structure is aluminum,
steel, and plastic parts;



ON-TCE

Endoscopic Workstation
Trolley

The main structure is aluminum,
steel, and plastic parts;



AG-BT001

Ultrasound Trolley

Desktop outer size: 710*410mm
Desktop inner size: 640*340mm
Packing size: 540mm*370*870mm



AG-BT002

Ultrasound Trolley

Desktop outer size: 680*440mm
Desktop inner size: 570*360mm
Packing size: 690mm*510*380mm



AG-OBT002
Over bed table



AG-OBT010
Over bed table



AG-OBT012
Over bed table



AG-OBT013
Over bed table



AG-BC005
Bedside Cabinet



AG-BC016
Bedside Cabinet



AG-BC020
Bedside Cabinet



AG-BC025
Bedside Cabinet



AG-M001
Anti-decubitus Air
Mattress(Bubble)



AG-M003
Anti-decubitus Air
Mattress(Air-Jet)



AG-M004-1
4-Folding Foam Mattress



AG-M0016
Air Mattress



AG-SC001
Bedside Screen



AG-SC002
Bedside Screen



AG-ECC01
Examintion Couch



AG-ECC07
Examintion Couch

ACCOMPANY CHAIR



CT-F10

Accompany Chair

Unfold size: 1900*670*360mm

Folded size: 240*170*1050mm



OLT-803

Accompany Chair

Size: 650*1900mm,14kg



SF-912

Accompany Chair

Size: 1180*1720*450mm



AG-AC001

Accompany Chair

Fold size: 620*720*940mm

Unfold size: 620*720*1920mm



AG-AC003

Accompany Chair

Folded: 740*620*350mm

Unfolded size: 1900*620*200mm



C-5017

Accompany Chair

Packing size: 200*80*50cm



AG-AC010

Accompany Chair

Size: 750*240*980mm

Unfold size: 1860*750*300mm



OLT-804-1

Accompany Chair

Size: 1000*1860mm,23kg



OLT-007

Accompany Chair

Size: 800*1900mm,23kg/
1000*1900mm,29kg



AG-AC011

Accompany Chair

Unfolded size: 1920*260mm

Folded size: 1050*790*380mm



AG-ACR01

Accompany Chair

Package size: 830*780*780mm



C-5009

Accompany Chair

Unfold size: 1800*420*750mm

Fold size: 880*900*750mm

ACCOMPANY CHAIR



AG-AC009

Accompany Chair

Size: 660*680*410mm

Unfold size: 1860*680*400mm



C-5018

Accompany Chair

Unfold size: 1800*830*420mm

Fold size: 730*830*940mm



AG-AC007

Accompany Chair

Folded: 800*710*430mm
(back section height 980mm)

Unfolded size: 2040*710*430mm



AG-AC005

Accompany Chair

Fold size: 650*780*1020mm

Unfold size: 2060*650*450mm



C-5014

Accompany Chair

Unfold size: 1850*730*450mm

Fold size: 940*820*560mm



C-5013

Accompany Chair

Unfold size: 820*800*600mm

Fold size: 960*780*600mm



C-5010

Accompany Chair

Unfold size: 1800*610*430mm

Fold size: 850*830*610mm



AG-LR01

Accompany Chair

Size: 668*1205*1178mm



AG-AC012

Accompany Chair

Fold size: 830*850*420mm

Unfold size: 2100*850*610mm



AG-TC001

Infusion Chair

Size: 770*680*1080mm



AG-TC002

Infusion Chair

Size: 820*700*1020mm



AG-TC001B

Hospital Infusion Chair

size: 770*680*1080mm



AG-AC006

Infusion Chair

Size: 730*840*1050mm



AG-TC003

Infusion Chair

Size: 890*830*1050mm



AG-MCR16

Massage Chair

Full-size back roller offers
6 massage method

S&L backtrack

Wall Hugger

2 in 1 leg massager

Body Scan & auto adaption

4 full body massage programs

Rocking chair function

Adjustable backrest angle



AG-MCR10

Electric Automatic
Multifunctional Massage Chair

S/L roller path, allows a larger massage range,
and fit the body shape better than ever
Zero gravity: relief neck/spine stress, reduce
heart load. Foot & calf roller: full leg reflexology
massage

Rock rotating: maximize the relax sense

Sliding forward while reclining, help saving
placement space

Bluetooth system for music and wireless remote

Full body air massage, relief tension

Multiple heating point, keep warm in winter

Auto extending leg part, fit user's leg length LED

Light: help attract customers



AG-MCR01

Massage Chair

Zero Gravity

Foot roller

Thai-style foot scrape therapy massage

Full air pressure armrest massager

Leg part extending function

Carbon fiber far-infrared heating

L-shape back track

Pillow massage

Bluetooth connection

Sliding Function

Calf rolling massage function



AG-TWC003

Waiting Chair

Size: 1750*680*770mm



AG-TWC002

Waiting Chair

Size: 1750*680*770mm



AG-TWC06

Waiting Chair

Size: 1580*680*770mm



D763

Waiting Chair

Size: 1800*620*770mm



D762-T

Waiting Chair

Size: 1800*620*770mm



M863

Waiting Chair

Size: 1720*570*750mm



D862-PU

Waiting Chair

Size: 1220*620*770mm



CS103-PU

Waiting Chair

Size: 1755*660*780mm



AG-TWC004

Waiting Chair

Size: 1910*750*800mm



LA103PU

Waiting Chair

Size: 1755*670*785mm



GS103-PU

Waiting Chair

Size: 1755*670*820mm



D763-PU-D

Waiting Chair

Size: 1800*620*770mm



HS102-T

Waiting Chair

Size: 1755*725*910mm



LA103-PU

Waiting Chair

Size: 1755*670*785mm



D873-PU

Waiting Chair

Size: 1850*680*850mm



D883H-D

Waiting Chair

Size: 1800*620*780mm



ST103

Waiting Chair

Size: 1900*730*1000mm



D763-PU-D

Waiting Chair

Size: 1800*620*770mm



PUP053-H

Waiting Chair

Size: 1770*655*880mm



PUP033-H

Waiting Chair

Size: 1725*680*870mm



PUP013

Waiting Chair

Size: 1640*660*877mm



AG-XB-Y1000

Hospital Single-Channel
Infusion Pump



AG-XB-Y1200

Hospital Double-Channel
Infusion Pump



5000A

Infusion Pump



SZHK-100

Single Channel Infusion Pump



AG-700A

Medical Electronic Nutrition Pump



BFP-10

Feeding Pumps



AG-900B

Medical Eelectric Injection Pump



HF-610C

Syringe Pump For Pet



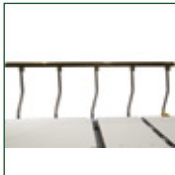
AG-902A

Double-Channel Syringe Pump



BD-300B

Hospital Syringe Destroyer



AG-HS001

Hydraulic Transport Stretcher

Size: 2100*850*590-910mm

Height: 590-910mm

Leg Rest: 0°-30°

Back Rest: 0°-75°

Mattress Base: 1940*620mm

4200mm central control wheels (4 Central Lock Castor)

5th Direction Wheel

Back Rest X Ray Translucent

Tredelenburg and Reverse: -15°- +15°

Powder Coated Steel Bed Frame

2 hydraulic pumps to control the height and front and rear tilt

The back is supported by a gas spring and can be quickly laid flat (CPR Quick Release)

Stainless Steel Side Rail



AG-HS023

Bath Transport Stretcher

Trendelenburg, anti-trendelenburg: 0-15°

Material Stainless steel countertops
PU material bath tank
The hydraulic control pedal,
two independent hydraulic pump

Packing 1980*720*670mm

Weight 134kg



AG-HS005

Luxurious Hydraulic Rise-and-Fall Transport Stretcher

Size: 2120*820*610-900mm

Two American pumps, stable and durable

CPR, full bed x-ray

With PU waterproof mattress (50mm)

American bakelite plate



AG-HS011

Transport Stretcher

Size: 3650*640*650-950mm

Material is stainless steel

Central locking system

Two trolleys join together, lift and down separately

Backrest max upward angle: 75°



AG-HS020

Transport Stretcher

Size: 1930*663*510-850mm

Safety loading: 170KG

Height lifting system: Use Metal rocker

Backboard Lifting angle 0-70°



AG-HS002

Manual Transfer Stretcher

Height is adjustable from 540mm to 840mm (Operated manually)

Locking function with central locking system

Back section is controlled by spring

Size: 1930*640*540-840mm



AG-HS025

Hydraulic Transport Stretcher

Size: 1880*620*560-890mm

Back adjust: 0-75°

Foot adjust: 0-40°

Tilt adjust: -18°-18°

Safe working load: 250KG



AG-HS013

Transport Stretcher

Size: 1900*630*800mm
Material:
Stainless steel frame
ABS bed platform
Artificial leather mattress
IV pole
4 wheels



AG-HS014

Manual Transport Stretcher

Size: 1900*630*600-800mm
Material:
Stainless steel frame
Artificial leather mattress
IV pole
4 wheels



AG-HS003

Connecting Stretcher Trolley

Size: 3650*640*640-970mm
Material:
Aluminum alloy, durable
Functions:
Height adjustable 640mm to 970mm, Back section: 0-75°
Locking function with central locking system
Two trolleys join together, lift and down separately



AG-HS007

Electric Transport Stretcher

Size: 2120*800*930/630mm
Material:
X-ray(Electric panel made in America), CPR
Function:
Backrest max upward angle: 75°
Height adjustment: 610-930mm
Trendelenburg: 12°
Anti-trendelenburg: 12°



AG-HS021

Surgery Exchange Car

Size: 1900*640*730-940mm
Functions:
Backrest max upward angle: 75°
Height adjustable
Outside wheel decline and inside wheel rise transition(one-click system)



AG-HS010

Electric Transport Stretcher

Size: 1930*700*630-930mm
Backrest max upward angle: 75°
Height adjustment: 630-930mm
Trendelenburg: 15°
Anti-trendelenburg: 15°



AG-2B7F

Spine Board

With safe belts
Allowed X-rays



AG-2B3

Aluminum Alloy Foldaway Stretcher

With wheels, outriggers and can be folded
Made of high strength aluminum alloy material and the water-tightness leather materials



YJK-E-4-1

Soft Stretcher

Made of double thick Oxford cloth
Total of 10 handles
With two safety straps
Can be folded and put into a hand bag



AG-4B4

Aluminum Loading Ambulance Stretcher

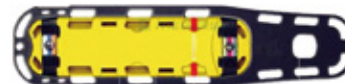
Made of high-strength aluminum alloy thick-wall pipes
The bed surface is made of foamed cushion and the adjustable back



YJK-F5

Multifunctional Stretcher

Made of special composite plastic
An extra rope
Can be used for fire emergency rescue



YJK-F10

Spinal Fixation Plate

Material: high-density plastic polyethylene
Suitable for rescue in various harsh environments



YJK-H-7

Chest Stretcher

suitable for cervical and spinal fixation in traffic accident rescue
rigid plate for spinal fixation



YJK-CPR-3

First Aid Stretcher Equipment CPR Board

made of high density polyethylene plastic
Loading: ≤159kg



AG-AP001

Medical Liquid Suction Machine

Pump structure: membrane type
Limit negative pressure value: 0.09MPa
Suction rate: 20 L/min
Suction bottle: 2500ml/piece, 2
Power voltage: 50±1Hz
Input power: 400VA
Noise: ≤65dB



AG-AP0C3

Mobile Electric Suction Device

Power voltage: AC220V±10% 50Hz
Negative pressure: ≥0.09MPa(680mmHg)
Suction rate: ≥40L/min
Range of negative pressure: 0.013MPa–0.09Mpa(680mmHg)
Suction bottle: 2500ml x 2
Noise: ≤55dB
Input power: 300VA
Working type: intermittent loading, continuous operation



AG-AP0C4

Gynecological Electric Suction Device

Power voltage: AC220V±10% 50Hz
Negative pressure: ≥0.09MPa(680mmHg)
Suction rate: ≥25L/min
Range of negative pressure: 0.013MPa–0.09Mpa (680mmHg)
Suction bottle: 2500ml x 2
Noise: ≤55dB
Input power: 400VA
Working type: intermittent loading, continuous operation



AG-AP0A2

Electric Sputum Suction Device

Power voltage: AC 220V±10% 50Hz
Suction rate: ≥15L/min
Negative pressure range: 0.013–0.07Mpa(600mmHg)
Suction bottle: 1000ml
Input power: 150VA
Pump structure: oil-free self-lubricated pump
Noise: ≤50dB
Working type: intermittent loading, continuous operation



AG-AP0D1

Mobile Electric Suction Device

Power voltage: AC220V±10% 50Hz
Negative pressure: ≥0.09MPa(680mmHg)
Suction rate: ≥20L/min
Range of negative pressure: 0.013MPa–0.09Mpa(680mmHg)
Suction bottle: 2500ml x 2
Noise: ≤55dB
Input power: 400VA
Working type: intermittent loading, continuous operation



AG-XYQ01

Aspirator

Max vacuum: ≥0.09MPa (680mmHg)
Adjustable vacuum range: 0.02MPa–0.09MPa (150–680mmHg)
Flow rate: ≥32L/Min
Noise: ≤60dB(A)
Storage bottles: 2500mLx2(glass)
Power supply: AC220V 50Hz
Input: 150VA



AG-AP003

Mobile Electric Suction Device

Power voltage: AC220V±10% 50Hz
Negative pressure: ≥0.09MPa(680mmHg)
Suction rate first level: ≥35L/min, second level ≥15L/min
Range of negative pressure: 0.013MPa–0.09Mpa(680mmHg)
Suction bottle: 500ml x 2 / 2500ml x 2
Noise: ≤55dB
Input power: 400VA
Working type: intermittent loading, continuous operation



AG-XYQ02

Aspirator

Max vacuum: ≥0.09MPa (680mmHg)
Adjustable vacuum range: 0.02MPa–0.09MPa
Flow rate: ≥32 L/min
Noise: ≤60 dB (A)
Power supply: AC220V 50 Hz
Input power: 150VA



AG-XYQ05

Aspirator

Limit negative pressure value: ≥0.09 Mpa (680 mmHg)
Negative pressure adjustment range: 0.02Mpa (150mmHg) ~ limit negative pressure value
Instantaneous pumping rate: ≥80 L/min
Liquid storage bottle: 4000mLx2+2000mLx2 (PC)
Power supply: AC 220V 50 Hz
Input power: 280 VA



YK600-1

Respiratory Treatment Device for Removing Sputum

Display: Large LCD screen, man-machine conversation interface

Memory function: Memory time and frequency, stop/start working at any time without shutting down power and operation

Output mode: Single output

Voltage: AC220V±22V, 50HZ±1HZ

Ultra quiet design: ≤50dB, Electromagnetic-shielding device applied in the whole machine, nil interference, No radiation

Mode: Automatic, hand-operated mode(P1, P2, P3, P4)

Vibration amplitude: ≤5mm+0.6mm, setting time1-60min, and percussion frequency 10-60HZ

Flexible shaft: 1.8M, pluggable/stainless steel, easy to clean, disinfect and change

Feedback control circuit: Stable frequency, good penetrating power, easy for expectoration

Percussion head: A variety of models Outward appearance Streamlined integrative/portable machine, rubber tire



YK700-1

Respiratory Treatment Device for Removing Sputum

Display: Large LCD screen, man-machine conversation interface

Memory function: Memory time and frequency, stop/start working at any time without shutting down power and operation

Output mode: Single output

Voltage: AC220V±22V, 50HZ±1HZ

Ultra quiet design: ≤50dB, Electromagnetic-shielding device applied in the whole machine, nil interference, No radiation

Mode: Automatic and hand-operated mode

Vibration amplitude: ≤5mm+0.6mm, setting time1-60min, and percussion frequency 10-60HZ

Flexible shaft: 1.8M, pluggable/stainless steel, easy to clean, disinfect and change

Feedback control circuit: Stable frequency, good penetrating power, easy for expectoration

Percussion head: A variety of models



YK700-1H

Vibration Machine for Lung

Display: Large LCD screen, man-machine conversation interface

Memory function: Memory time and frequency, stop/start working at any time without shutting down power and operation

Output mode: Single output

Voltage: AC220V±22V, 50HZ±1HZ

Ultra quiet design: ≤50dB, Electromagnetic-shielding device applied in the whole machine, nil interference, No radiation

Mode: Automatic and hand-operated mode

Vibration amplitude: ≤5mm+0.6mm, setting time1-60min, and percussion frequency 10-60HZ

Flexible shaft: 1.8M, pluggable/ stainless steel, easy to clean, disinfect and change

Feedback control circuit: Stable frequency, good penetrating power,easy for expectoration

Percussion head: A variety of models Outward appearance Streamlined integrative/portable machine, rubber tire



YB·DX-98-7

Electric Portable Absorb Phlegm Unit

Negative pressure limit: ≥0.08MPa(600mmHg)

Negative pressure adjustable range:

0.02-0.08MPa(150-600mmHg)

Pumping rate: hole (air vent)≥10L/min, terminal≥6L/min

Power: AC220V±22V, 50Hz±1Hz

Input: ≤30VA

Noise: ≤60dB

Collection container capacity: 1000ml

Temperature: +5℃- +35℃, relative humidity:

25℃ no exceeding 80%, atmospheric pressure:

86KPa~106KPa.



YB·DX-98-7A

Electric Portable Absorb Phlegm Unit

Negative pressure limit: ≥0.08MPa(600mmHg);

Negative pressure adjustable range: 0.02-0.08MPa

(150-600mmHg);

Pumping rate: hole (air vent)≥20L/min, terminal≥15L/min;

Power: AC220V±22V, 50Hz±1Hz;

Input: ≤60VA;

Noise: ≤60dB;

Collection container capacity: 1000ml;

Work environment: temperature:+5℃~+35℃,

relative humidity: 25℃ no exceeding 80%,

atmospheric pressure: 86KPa~106KPa.



ACS205

Touch Screen Airway Clearance System

Display: 10.4" LCD screen

Atomization Function: Yes

Timing Range: 1min-100min

Manual Frequency Range: 2Hz-26Hz

Vibration Intensity Range: 1-11

Pressure Range: 0.5-3.9Kpa

Power Source: AC 100V-240V 50Hz/60Hz



QZD-A

Automatic Gastric Lavage Machine

Power supply: AC220V±22V, 50Hz±1Hz

Input: ≤140VA

Noise: ≤65dB(A)

Automatic control flushing flow: ≤350ml/time

automatic control suction flow: ≤450ml/time

Automatic control suction flow: 50–150ml/time

more than automatic control flushing flow

Flow rate: ≥2L/min

Automatic control paunch in and out time: ≤30s/time

QZD-B

Automatic Gastric Lavage Machine

Power supply: AC220V±22V, 50Hz±1Hz

Input: ≤140VA

Noise: ≤65dB (A)

Paunch in pressure set: ≤0.067MPa

Paunch out pressure set: ≥-0.067MPa

Paunch in flow set: ≤350ml/time

Paunch out flow set: ≤450ml/time

Paunch in and out time: ≤30s/time



QZD-C

Automatic Gastric Lavage Machine

Power supply: AC220V±22V, 50Hz±1Hz

Input: ≤140VA

Noise: ≤65dB (A)

Paunch in pressure set: ≤0.067MPa

Paunch out pressure set: ≥-0.067MPa

Paunch in flow: ≤350ml/time, out flow≤450ml/time

Paunch in and out time: ≤30s/time

The paunch in and out pressure can be freely set by different patients

DEFIBRILLATOR



AG-DE001A

Medical Defibrillator(Monophasic)

Size: 410*330*200mm
Main function: monophasic single wave
asynchronous, external defibrillation
Charging time: At 360J less than 10 sec



AG-DE002C

Medical Defibrillator(Biphasic)

Package Size: 560*460*470mm
Defibrillator type: manual, synchronized, asynchronous
standard adult/pediatric paddles
Reusable external adult paddles(pediatric paddles integrated)



AG-DE005

Defibrillator

ECG Cable (5 Leads) 1Pc
AED Pad connector 1Pc
AED Pad 1pc
Ground Cable 1Pc
Power Cable 1Pc
Thermal Paper Role 1Pc
Products size: 328*236*281mm



AED7000 Plus

Automatic External Defibrillator

Biphasic truncated exponential
Audible prompts: 19 audible prompts
Visual prompts: LED prompts; automaticself-test



AG-DE0A6L

Automated External Defibrillator(AED)

Main unit for adult and pediatrics 4 energy
AED pad
Carry bag
User manual
Battery



AG-DE0A1

AED Cabinet

Durable steel
Material with alarm and strobe light
Packing Size: 530*440*430mm



AG-OT007

Electric hydraulic operating table

Specifications:

Overall Length: 2050mm

Width: 550mm

Dimension of section:

Head Section: 250*550mm

Back Section: 465*550mm

Waist Section: 75*550mm

Seat section: 550*550mm

Leg Section: 600*240mm

Min Height: 600mm

Max Height: 950mm

Adjust: 350mm

Range of movements:

Reversed Trendelenburg: $\geq 25^\circ$

Trendelenburg: $\geq 25^\circ$

Lateral Tilt: $\geq 15^\circ$

Backward and Forward Movements: ≥ 400 mm

Adjustment of sections:

Head Section Raised from the horizontal: $\geq 45^\circ$

Head Section lowered from the horizontal: $\geq 90^\circ$

Back Section Raised from the horizontal: $\geq 75^\circ$

Back Section lowered from the horizontal: $\geq 30^\circ$

Leg Section Lowered from the horizontal: $\geq 90^\circ$

Leg section opened: $\geq 90^\circ$

Back rise(When optional): ≥ 80 mm

Horizontal rotation of tabletop: $0 \sim 180^\circ$

With V and anti-V (when optional)



AG-OT009

Electric Operating Table

Reversed Trendelenburg: $\geq 20^\circ$

Trendelenburg: $\geq 15^\circ$

Lateral Tilt: $\geq 15^\circ$

Head Section: $45^\circ - 90^\circ$

Back Section Raised from the horizontal: $\geq 45^\circ$

Kidney Bridge Elevated: $\geq 80\text{mm}$

Leg Section Lowered from the horizontal: $\geq 90^\circ$

Leg section opened: $\geq 90^\circ$

Backward and Forward Movements: $\geq 40\text{cm}$

Lifting speed: 4~16mm/s



AG-OT304

SUS304 Stainless Steel Accessories Hydraulic Operating Table

Electric Hydraulic Operating Table

Trendelenburg/Reverse: $30^\circ/30^\circ$

Lateral Tilt(left/right): $20^\circ/20^\circ$

Head Plate Up/Down: $60^\circ/90^\circ$

Back Plate Up/Down: $75^\circ/50^\circ$ (optional electric)

)Leg Plate Up/Down: $30^\circ/90^\circ$

Kidney: 130mm(optional electric)

Weight Capacity: 300kg

Flex: 105° 45° 30°

Reflex: 230° 20° 30°



AG-OT030

Electric Operating Table

Adjustment Forward and Backward $\geq 245\text{mm}$

Reversed Trendelenburg: $\geq 20^\circ$

Trendelenburg: $\geq 15^\circ$

Lateral Tilt: $\geq 15^\circ$

Table Section Adjustment Head Section Raised from the horizontal: $\geq 30^\circ$

Head Section Lowered from the horizontal: $\geq 45^\circ$

°Back Section Up from the horizontal: $\geq 45^\circ$

Back Section Down from the horizontal: $\geq 5^\circ$

Kidney Rising: $\geq 80\text{mm}$

Leg Section Down from the horizontal: $\geq 90^\circ$

Leg Section Opened: $\geq 90^\circ$

Rising Speed: 3~16mm/s



AG-OT032

Electric Hydraulic Operating Table

Low position and large lift, the table top lift stroke is up to 450mm, and there is sufficient space for use with the C-arm.

Longitudinal translation is up to 500mm, without the need for reverse placement of the patient or pre-adjustment of the table, the whole body C-arm fluoroscopy and imaging can be performed on the patient.

Equipped with a built-in emergency power supply, which can be used in emergency after the network power is cut off.

Built-in waist bridge

The bed surface can form a V-shaped posture of 100° , and a reverse V-shaped posture of 220°

The bed surface can be equipped with memory foam, which can be re-naturally plasticized according to the patient's body temperature and body shape, and it is detachable.

Alternate operating system

The main material is SUS304 stainless steel, high-strength cast iron, aluminum alloy, strong and rigid.

Standard one-key horizontal reset.



AG-OT008

Electric Hydraulic Operating Table

Reversed Trendelenburg: $\geq 30^\circ$

Trendelenburg: $\geq 25^\circ$

Lateral Tilt: $\geq 25^\circ$

Backward and Forward Movements: $\geq 530\text{mm}$

Head Section Raised from the horizontal: $\geq 45^\circ$

Head Section lowered from the horizontal: $\geq 90^\circ$

Back Section Raised from the horizontal: $\geq 75^\circ$

Back Section Lowered from the horizontal: $\geq 30^\circ$

Leg Section Lowered from the horizontal: $\geq 90^\circ$

Leg Section opened: $\geq 90^\circ$

Kidney Bridge Elevated (When optional): $\geq 80\text{mm}$

Lifting speed: 4~16mm/s



AG-OT028

Manual Operating Table

Dimension of table top:

Overall Length 1950mm Width 550mm

Table top of from floor:

Max Height 530mm Min Height 780mm

Adjust Height 250mm

Adjustments of Head Section: Descend 100mm



AG-OT015

Manual hydraulic Operating Table

Reversed Trendelenburg: $\geq 15^\circ$

Trendelenburg: $\geq 20^\circ$

Lateral Tilt: $\geq 15^\circ$

Head Section Raised from the horizontal: $\geq 45^\circ$

Head Section lowered from the horizontal: $\geq 90^\circ$

Kidney Bridge Elevation: $\geq 100\text{mm}$

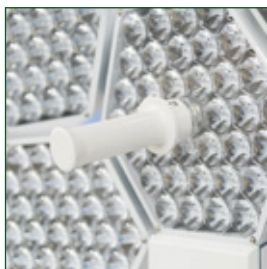
Back Section Raised from the horizontal: $\geq 45^\circ$

Leg Section Lowered from the horizontal: $\geq 90^\circ$

Back ward and Forward movement: $\geq 400\text{mm}$

BS Operating Table

This product is used in hospital operating room for surgery such as head, neck, chest and abdomen, perineum and limbs,, obstetrics and gynecology, ENT, orthopedics.surgery



AG-LT014B LED

LED Shadowless Operation Double Three Sum Five Surgical Lamp

Illuminance: LED3: $\geq 120,000\text{Lux}$ LED5: $\geq 160,000\text{Lux}$

Colour temperature: $4500 \pm 200\text{K}$

Colour reduction index(Ra): 96

Illuminance depth: 1020mm/1150mm

Rated power of bulb: 3.2V/1W

Total irradiance: LED3: $380\text{W}/\text{m}^2$ LED5: $510\text{W}/\text{m}^2$

Size of light field: 200~350mm

Service life of illuminant: 50,000h

Power supply voltage: AC110~240v, 50/60Hz

Lowest height of installation: 2900mm

Total power consumption: 140W

Total LED bulb quantity: 294 pcs



AG-LT022

LED Surgical Lamp

The rotating arm rotates around the fixed seat: $\geq 360^\circ$
 The balance arm rotates around the rotating arm: $\geq 300^\circ$
 The stand rotates around the balance arm: $\geq 300^\circ$
 Weft support rotation: $\geq 180^\circ$
 The lamp holder rotates around the weft support: $\geq 180^\circ$
 Balance arm moves up and down up $\geq 40^\circ$ down $\geq 40^\circ$



AG-LT017B

Operating lamp

Content Reflector diameter: 700mm
 Reflector diameter: 500mm
 CenterLightintensity: 120klx~140klx 80klx~120klx
 Spot diameter (d10: $\geq 180\text{mm}$ $\geq 160\text{mm}$)
 Column depth: $\geq 700\text{mm}$ $\geq 600\text{mm}$
 Color temperature: 4500 \pm 500K
 Increasing temperature: $\leq 11^\circ\text{C}$
 Color rendering Index (CRI): ≥ 92



AG-LT013(4+4)

LED shadowless operation lamp-double

Illuminance: $\geq 120,000\text{Lux}$ $\geq 120,000\text{Lux}$

Colour temperature: 4800 \pm 200K
 Colour reduction index(Ra): 96
 Illuminance depth: 1050mm
 Total irradiance: 420W/m²
 Size of light field: 120~240mm
 Lamp head diameter: 550mm/550mm
 Rated power of bulb: 3.2V/1W
 Service life of illuminant: 50,000h
 Power supply voltage: AC110~240v,50/60Hz
 Lowest height of installation: 2900mm
 Total power consumption: 160W
 Total LED bulb quantity: 104pcs



AG-LT024(3+4)

Shadowless Operating lamp

Illuminance L3C: $\geq 140,000\text{Lux}$ L4C: $\geq 160,000\text{Lux}$
 Color temperature: 3500 \pm 300K,4000 \pm 300K, 4500 \pm 300K,5000 \pm 300K
 Color reduction index(Ra): 96 ,R9 97, R13.98
 Total irradiance LED3: 380W/m² LED4: 380W/m²
 Size of light field: 125~250mm
 Service life of illuminant: 50,000h
 Power supply voltage: AC110~240v,50/60Hz
 Lowest height of installation: 2900mm
 Total power consumption: 90W
 Total LED bulb quantity: 187pcs
 Green ENDO YES
 Dimming type Analog dimming
 Packing Size/ctn 1230*730*430mm GW: 63kg NW: 52kg
 Packing Size/ctn(LED4) 1000*1000*270mm GW: 18kg NW: 15kg
 Packing Size/ctn(LED3) 250*890*890mm GW: 14kg NW: 11kg



AG-LT019B

Operating Lamp

Reflector diameter: 700mm
Spot diameter(d10): 230mm
Spot diameter(d50): 160mm
Light beam depth: 700mm



AG-LT024-4

Operating lamp

Illuminance: L4C : $\geq 160,000\text{Lux}$
Color temperature: $3500\pm 300\text{K}$, $4000\pm 300\text{K}$, $4500\pm 300\text{K}$, $5000\pm 300\text{K}$
Color reduction index(Ra): 96 ,R9 97, R13.98
Total irradiance: $380\text{W}/\text{m}^2$
Size of light field: 125~250mm
Service life of illuminant: 50,000h
Power supply voltage: AC110~240v,50/60Hz
Lowest height of installation: 2900mm
Total power consumption: 50W
Total LED bulb quantity: 112pcs
Green ENDO: yes
Dimming type: Analog dimming



AG-LT020A-1

LED Operating Light

Reflector diameter: 550mm
Center illuminance: 120000Lux
Spot diameter(d10): $\geq 150\text{mm}$
Spot diameter(d50): $\geq 120\text{mm}$
Light beam depth: $\geq 900\text{mm}$
Color temperature: $4200\pm 300\text{K}$
Color rendering index: $R_a > 92$
Maximum illuminance: $E_c < 500\text{W}/\text{m}^2$
Brightness adjustment: 10 continuous adjustment
Height: 1500~2500mm



AG-LT018

On Stand LED Examination Light Surgical Lamp

Input Power: 36VA
Main fuse F2AL 250V $\times 1$
Emergency power supply Voltage: DC24V(+5%~-10%)
Center illuminance: $10\text{klx} \leq E_c \leq 80\text{klx}$
Spot diameter (D10): $\geq 80\text{mm}$
Spot diameter (D50): $\geq d_{10}/2$
Color temperature: $3500\text{K} \leq T_c \leq 5000\text{K}$
Lamp around the zonal support rotation: $\geq 40^\circ$
Lamp Life: 50,000 hours
Bulb 12 Particel beads



AG-58(new)

Surgical pendant

Standard Gas Outlets: 2*Oxygen, 2*Vacuum,
Colors and shapes for distinction

Using cycle for more than 20,000 times

Using Second Sealing technology with three status
(open, stop, pull), can be maintained with gas

Electrical sockets: 8pcs 220V, 10A

Grounding terminal: 2pcs 220V, 10A

Injection Pole: 2set Stainless Steel

Infusion Pole: 2 set Stainless Steel

Drawer: 1pc



AG-360

Surgical pendant

Electrical sockets: 8pcs 220V, 10A

Grounding terminal: 2pcs 220V, 10A

Network interface: 1pc RJ45

Injection Pole: 1set Stainless Steel

Infusion Pole: 1set Stainless Steel

Drawer: 1pc



AG-360S-2

Surgical pendant

Standard Gas Outlets: 2*Oxygen, 2*Vacuum

Colors and shapes for distinction

Using cycle for more than 20,000 times

Using Second Sealing technology with 3 status
(open, stop, pull), can be maintained with gas.

Electrical sockets: 8pcs 220V, 10A

Grounding terminal: 2pcs 220V, 10A

Network interface: 1pc RJ45



AG-45

Surgical pendant

Standard Gas Outlets: 2*Oxygen, 2*Vacuum, 2*Medical Air
colors and shapes for distinction

Using cycle for more than 20,000 times

Using Second Sealing technology with 3 status
(open, stop, pull), can be maintained with gas.

Brake System: Pneumatic brake

Electrical sockets: 8pcs 220V, 10A

Grounding terminal: 2pcs 220V, 10A

Injection Pump: 1 set Infusion Pump: 1 set

Drawer: 2 pcs Wet Part: One Arm



AG-18C-3

Surgical pendant

Standard Gas Outlets: 1*Oxygen, 1*Vacuum, 1*Medical Air

Colors and shapes for distinction

Using cycle for more than 20,000 times

Using second sealing technology with 3 status (open, stop, pull), can be maintained with gas.

Brake System Pneumatic brake

Electrical sockets: 6pcs 220V, 10A

Grounding terminal: 2pcs 220V, 10A

Network interface: 1pc RJ45

Injection Pump 1 set Infusion Pump 1 set Drawer 2 pcs

Storage Basket: 2pcs

Lighting Lamp: 2 sets



AG-HFP-SS90/160-1

Surgical pendant

1 double arm Arm, 950mm+800mm, The load capacity is 160kg, friction brake

1 Column length (L=1000mm)

1 Guideway extension arm

1 Height-adjustable infusion stand

3 Gas socket (German Standard import) (O2x1, Airx1, Vacx1)

6 Multi-purpose power socket

1 Communication Socket RJ45

2 Shelf(400*510mm)

1 Stainless steel basket



AG-20V-1

Surgical pendant

Standard Gas Outlets: 2*Oxygen, 2*Vacuum, 2*Medical Air

Colors and shapes for distinction

Using cycle for more than 20,000 times

Using second sealing technology with 3 status (open, stop, pull), can be maintained with gas.

Electrical sockets: 12pcs 220V, 10A

Grounding terminal: 4pcs 220V, 10A

Network interface: 1pc RJ45

Injection Pump: Psle 2 sets

Infusion Pump: Psle 2 sets

Drawer: 1 pc



AG-HFP-E+E

Surgical pendant

Lighting*2

Dry area: Ceiling box*1, O2x2, VAC*1, AIR*1

Electrical socket *6 (220V)

Shelf*2, medical gas outlets*4

Wet Area: Column (L=700mm)*1

O2*2, VAC*1, AIR*1

Electrical socket *6 (220V)

Shelf*1, Extension Arm*1, Suction rack*1



AG-FS008
Two Layers Step Stool



AG-NS004
Hospital Patient Stool



AG-NS006
SS Doctor Stool



AG-FS003
SS Step Stool



AG-NS001
Medical Stool



AG-NS005
SS Doctor Stool



AG-NS007
SS Stool



AG-NS008
SS Stool



AG-NS005B
Doctor Stool



DTL-ZY-08
Doctor Sool



DTL-ZY-10
Doctor Stool



FSXS-1311
Doctor Stool



AG-SS006-1
SS Instrument Trolley



AG-SS007
Fan-Shaped Operation
Apparatus Table



AG-SS020
SS Instrument Trolley



AG-SS010
SS Linen Trolley



AG-SS013
Trolley for Dirty Clothes



AG-SS019B
SS Linen Trolley



AG-SS063
Hand Soaking Drum with Trestle



AG-SS081
Trolley for dirty clothes



AG-SS084
Double Basin Trestle



AG-SS026
Dressing Delivery Cart



AG-SS027
SS Patient Record Trolley



AG-SS033
Infusion Treatment Cart



AG-SS021A

Thermos Cart for 24 Bottles



AG-SS024

Dressing and Medicine
Change Cart



AG-SS025

SS Laundry Trolley



AG-SS040A-1

Treatment Trolley



AG-SS040B

Treatment Trolley



AG-SS040C

Treatment Trolley



AG-SS042B-1

Treatment Trolley



AG-SS042D

Treatment Trolley



AG-SS053B

Treatment Trolley



AG-SS054

Trolley For Infusion Bottles



AG-SS057

Medicine Dispensing Cart



AG-SS060

Cart For Making Up
Bed And Nursing



AG-SS066

Oxygen Bottle Cart



AG-SS077

Hair Washing Cart



AG-SS082

Diaper Trolley



AG-SS092

Hospital Stainless Steel
Linen Trolley



AG-SS080-1

SS Operation Apparatus



AG-ET022

Emergency Treatment Cart



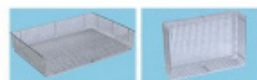
AG-SS032

Trolley With Flat Plate



AG-SS065

Single Basin Trestle



AG-SS073-1

Sterilizing Net Basket



AG-SS076

Fumigating Cabinet



AG-KB001

Kick Bucket



AG-SS029

Tray Stand With Two Posts



AG-SS008
Mayo Table



AG-SS008C
Mayo Table



AG-SS059
Lead Rack For Garments



AG-SS088
SS Goods Rack



AG-SS070
Shelves for Storing Baskets



AG-SS001-1
SS Cloth Cabinet



AG-SS003-2
SS Instrument Cabinet



AG-SS005-2
SS Instrument Locker



AG-SS039-1
Instrument Locker



AG-SS091-2
SS Treatment Cabinet



AG-SS075
Urine Pouring Sink



AG-SS078
Upright Pole



AG-SS034
Treatment Trolley



AG-SS035A
SS Food Trolley



AG-SS035D
SS Food Trolley



AG-DB002
Dust Bin



AG-WAS008
Water Sinks



AG-WAS002
SS Water Sinks



AG-WAS001
Stainless Steel Water
Sinks For Cleaning



AG-WAS003
Stainless Steel Water
Sinks For Cleaning



AG-WAS005
Stainless Steel Water
Sinks For Cleaning



AG-MK002
SS Worktable



AG-MK005
SS Worktable



AG-MK001
SS Worktable



SJR-300D

Electrosurgical Generator

Rated output power: Error range: $\pm 20\%$

Modulation frequency: Error range: $\pm 20\%$

Rated output voltage:

The output voltage of each output mode of the product should not be greater than the rated output voltage in the table below

Crest factor: Error range: $\pm 20\%$

Frequency: Error range: $\pm 20\%$



DGD-300B-2

Standard Electrosurgical Generator

Pure Cut Max Power: 300W

Blend Cut Max Power: 200W

Burn Max Power: 100W

Coagulation Max Power: 120W

Bipolar Coagulation Max Power: 70W



SY-A

Operating Scissors



HZZD-YTZJ-B

Medical Electric Drill



AG-C101A04

LDR Bed

Bed dimension including bed end and bumper wheel: Length2350 Width980mm

Bed dimension: Length1990mm Width870mm

Bed height: Lowest ≤ 490 mm Highest ≥ 890 mm (exclude the cushion)

Back section turning: $\geq 65^\circ$

Seat section turning: $\geq 15^\circ$

Trendelenburg: $\geq 8^\circ$

Leg section lifting distance: 170mm

Footrest swing out: $\geq 90^\circ$

Footrest folding: $\geq 90^\circ$

Guard rail up/down movement: 405mm

Castor diameter: 150mm



AG-C501

LDR Bed

Maximum range of bed surface adjustment Fold on back panel: $\geq 50^\circ$

Seat folding: $\geq 12^\circ$

Folding on foot plate: $\geq 40^\circ$

Foot abduction: $\geq 90^\circ$

Lean in front of the bed: $\geq 1^\circ$

Back tilt of bed surface: $\geq 12^\circ$

Auxiliary table lifting: $\geq 120\text{mm}$

Safe working load: 135kg



AG-C500

LDR Bed

Back section saised from the horizontal: $\geq 60^\circ$

Leg section opened: $\geq 90^\circ$

Reversed trendelenburg: $\geq 2^\circ$

Trendelenburg: $\geq 12^\circ$

Safe working load : $\geq 150\text{kg}$



AG-C310

LDR Bed

Dimension: 2050*980mm

Height: 580-950mm

Table top width: 880mm

Back section up: $\leq 70^\circ$

Trendelenburg: $\leq 12^\circ$

Reverse trendelenburg: $\leq 5^\circ$



AG-C101A01

LDR Bed

Height: 620mm–860mm(exclude the cushion)

Back section turning: $\geq 60^\circ$

Trendelenburg: $\geq 5^\circ$

Anti-trendelenburg: $\geq 8^\circ$

Seat section turning: $-12^\circ \sim 32^\circ$

Foot rest swing out: $\geq 45^\circ$

Foot rest folding: $\geq 45^\circ$

Handrail up/down movement: 360mm

Castor diameter: 150mm



AG-C101A03

LDR Bed

Height: 580mm–860mm (exclude the cushion)

Back section turning: $\geq 60^\circ$

Seat section turning: $\geq 10^\circ$

Trendelenburg: $\geq 8^\circ$

Leg section up/down movement: 100mm

Footrest swing out: $\geq 45^\circ$

Footrest folding: $\geq 45^\circ$



AG-C101A02B

Manual LDR Bed

Height: 580mm–950mm (exclude the cushion)

Back section turning: $\geq 70^\circ$

Trendelenburg: $\geq 5^\circ$

Anti-trendelenburg: $\geq 12^\circ$

Leg section telescope: 550mm

Castor Diameter: 125mm



AG-S108

Gynecology exam Chair

Bed size: 1400*720*880mm

Backrest upward angle: $\leq 70^\circ$

Foot-stool size: 500mm in length, 220mm in height

Foot-stool stroke: 450mm

Auxiliary table stroke: 420mm

Pedal stroke 305mm

Foot pedal swing angle: 15° , 30° , 45°

Maximum loading capacity: 240kg



AG-S105C

Medical Electric Gynecological Examination Table

Height: 420mm~1070mm

Trendelenburg: $\geq 30^\circ$

Anit-trendelenburg: $\leq 30^\circ$

Footrest slide distance: 100mm

Auxiliary table slide distance: 360mm



AG-C307

Medical Gynecology Examination Table

Length: 1800 ± 50 mm

Width: 500 ± 30 mm

Height: 750 ± 40 mm

Back rest: $0^\circ \sim 60^\circ + 5^\circ$

Leg rest: $0^\circ \sim 70^\circ + 5^\circ$



AG-S106

Medical Electric Gynecology Examination Chair

Back section upward: $\geq 70^\circ$

Back section downward: $\geq 20^\circ$

Seat section upward: $\geq 40^\circ$

Seat section downward: $\geq 0^\circ$

AG-C309

Electric Obstetric Table

Length: 2000mm

Width: 600mm

Height: 550mm

Adjustment: ≥ 400 mm

Back section raised from the horizontal: $\geq 70^\circ$

Back section lowered from the horizontal: $\geq 10^\circ$

Seat section raised from the horizontal: $\geq 28^\circ$

Seat section lowered from the horizontal: $\geq 10^\circ$



PLGYN-01

Obstetric Bed

Length/Width/Height 1900mm/600mm/750mm

Back Section Up/ Down: $\geq 45^\circ/\geq 10^\circ$

Seat Section Up/Down: $\geq 25^\circ/\geq 8^\circ$

Leg Section Up/Down: $\geq 25^\circ/\geq 25^\circ$



AG-IIR003

Infant Incubator



- Microprocessor Microprocessor based servo controlled temperature system
- Display: Air temperature, skin temperature, humidity, timer and heat power separately displayed by LED
- Alarms functions: Power failure; over temperature; temperature deviation; temperature sensor failure; fan failure
- Alarms: Silence/reset button
- Timer: Integral timer to record therapy time
- Humidity: Adjustable continuously
- Temperature Setting: $>37^{\circ}\text{C}$, Heater is electrically cut-out if air temperature inside incubator exceed 40°C
- Keypad: A keypad lock prevent inadvertent changes the setting
- Storage: Trough for pulling and pushing, which is convenient to add water and wash; Big storage cabinet
- Fan: Fan with low noise and long life-span
- Temperature: Temperature deviation and over temperature could be amended in front panel directly
- A second thermal cut-off function for more safety
- Skin temperature sensor failure protect function avoid over temperature
- The infant bed inclination angle is adjustable
- Structure Six operating windows, two sides operating windows can be swiveled

AG-IIR001A

Infant Incubator



- Microprocessor based servo controlled temperature system
- Control mode: Air mode
- Humidity is adjustable in two grades
- Set temperature, air temperature, heating power are displayed separately by LED
- Self – testing function, various failure alarms by audible and visual $>37^{\circ}\text{C}$ temperature set function
- Triple protection for over temperature with separate cut off device, more safety system
- The inclination of infant bed is adjustable
- Single wall hood, 4 operating windows and 2 iris ports
- RS232 connector
- Bracket with stand



AR-IRW003

Infant Warmer

- Microprocessor based servo controlled temperature system
- Three modes of control: Pre-warm, manual and automatic
- Set temperature and central skin temperature, peripheral temperature, air temperature, APGAR timer, heating power display separately
- 8" LCD colorful touch screen
- Carbon steel heater for more effectivity
- Special design Inclined heater head is more convenience for X ray test
- Digital skin temperature sensor, the data is accurate and stable
- Alloyed bracket, fastness
- Alarms functions for safety includes power failure, temperature deviation, temperature sensor failure, over temperature
- Integral timer to record therapy time
- Bigger mattress,
- Skin temperature trend for 5min
- Electric infant bed tilt angle: $\pm 12^\circ$
- Transparent protector folded down, with two infusion seals
- Convenient X-ray cassette tray under infant bed
- Electric height adjusted suit for operation
- With observe light, oxygen supply system and LED phototherap



AG-IRW002B

Infant Warmer

- Microprocessor based servo controlled temperature system
- Three modes: pre-warm, manual and automatic
- Set temperature and skin temperature display separately
- Anti-explosion micro crystal quartz for radiation source
- Self-testing function, various failure alarms by audible and visual
- Transparent protector can be folded down, with two infusion seals
- RS232 connector
- APGAR timer to record therapy time
- Convenient X-ray cassette tray under infant mattress
- Heater head can be adjusted $\pm 90^\circ$ horizontally
- Inclination of infant bed is adjustable



AG-50LED

Phototherapy

- LED bulbs as phototherapy radiant source
- Button control switch
- Equal light distribution. High intensity
- Quiet, no noise of fan
- Adjustable angle of head and height
- Steel support pole, Lockable wheels
- Timer for total using time and each treatment time
- Count down timer
- Long life span



AG-CB002

One Function Manual Hospital Children Bed

Size: 1850*750*500mm

Color: green



AG-CB004

Steel Frame Cartoon Flat Hospital Children Bed

Size: 1210*690*600mm

Color: pink



AG-CB014

304 Stainless Steel Hospital Children Bed

Size: 800*700*1600mm

Color: stainless Steel



AG-CB011

Baby Cart

Size: 850*500*765-935mm

Hi-low: 765-935mm

Head upward angel: 0-12°

Height adjustment: 765-935mm

Color: green, blue ,pink



AG-CB010

Baby Crib

Size: 810*520*880mm

Head upward angel: 0-12°

Color: green, blue ,pink or other



AG-CB009

Baby Cart

Size: 850*530*920mm

Trendelenburg: 0-15

Anti trendelebury: 0-12

Height adjustment: 780-980mm

Color: green, blue ,pink or other

ULTRASOUND SYSTEM



DW-580

Laptop Ultrasound Diagnostic System

Size: 12.1 inches, LCD medical display
Probe interface: Standard 1, 2 (optional)
Automatic identification function
support multiple probe work
Battery: lithium battery, 3-4 hours extra long standby time



AG-BU009

Laptop Ultrasound Machine

Size: 15 inches color LED screen
Probe connector: 2
Maximum Scanning Depth Max. 250mm
Multi-frequency 5 segment frequencies
Work time by built-in battery: 5 hours



DW-P6

Specialized In Obstetrics & Gynecology(3D/4D)

Size: 15 inches, high definition LED
Main function: 4D color
Ultrasonic host operating system: Windows 8 operating system
Spectrum pulse Doppler
Direction energy Doppler
Real time three synchronization



DW-T8

V4.0 High End Cardiac & Real Time 4D Color Dopple

Size: 21.5 inches,LED
Main function: 4D color,
Trolley type all digital color Doppler ultrasonic mainframe
Probes:Convex probe, Tran-vaginal probe, Linear probe,
Micro-convex probe, Cardiac probe,4D Volume probe
carotid artery intima measurement thickness(IMT)
Automatic spectral envelope measurement



DW-VET6

DW-VET6 Handheld Full
Digital Veterinary Ultrasound



DW-L3

DW-L3 Laptop Color Doppler
Ultrasound Scanner



DW-370

Full-Digital Trolley B/W
Ultrasound System



AG-T005L

Medical Line Array
Wireless Probe

FM-CT755

32 FIT ECO-Green Intelligent CT

NDI (NanoDose Iterative)

1024x 1024 Megapixel

Intelligent position

Intelligent Scanning

Mobile Operation Panel

One-key Start

High precision bearing

Eco-green metal tube

Energy-saving

Thermal airflow isolation design



SZBY-CT16

16 FIT CT Scan

One-click positioning

Two-click filming

Three-click scanning

Intelligent workflow throughout

Aegis ASG detector system

High performance liquid metal x-ray tube

Optimal beamline design

Aegis ASG detector system

Optimized for ultra-low noise

The Integrated casting of stator and rotor



AG-D112E

High Frequency Mobile C-arm System

Fully digital megapixel imaging system with high definition Integrated design
 Compact and lightweight
 High-quality megapixel image enhancer for high-resolution image acquisition
 Extraordinary Smart
 Integrated computer workstation & rack
 C-arm host and workstation integrated design, no cable, easy to move
 Small footprint, saving space
 Integrated workstation with rich image processing capabilities
 Humanized miniature, mobile operator panel design, free control from the host
 Wide base design, more secure five mechanical movements, free rotation without dead ends Human graphic operation interface
 The integrated design of the whole machine is beautifully compacted with human graphic LCD touch screen.
 Intelligent parameter adjustment, more accurate
 Rack monitor 300° rotation for free viewing in multiple directions



AG-D112B

High Frequency Mobile Digital C-arm System

Main frame of C-arm: 1pc
 X-ray generator and high frequency inverted power supply: 1pc
 Toshiba 9" three fields image intensifier: 1pc
 Medical Mega-pixels digital CCD camera: 1pc
 Digital Acquisition and Processing workstation: 1pc
 19" LCD monitor: 1pc
 24" LCD monitor: 1pc
 Imported minigroove grid: 1pc
 Electric adjustable collimator: 1pc
 Hand controller: 1pc
 Red light cross localization: 1pc



AG-CStar_S1

Mobile C-Arm X Ray Medical Imaging Machine

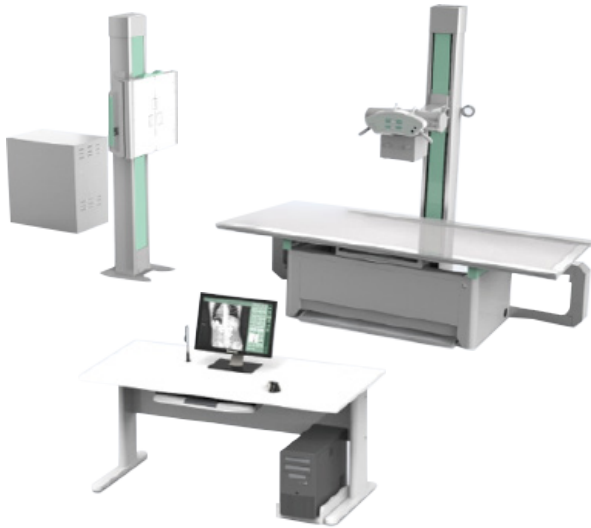
High-frequency inverter power supply and combined tube
 Power: 5.6kW
 Focus size: 0.6mm (small focus)/1.2mm (big focus)
 Heat capacity of tube cover: 480kJ (648kHU)
 Anode heat capacity: 60kJ (81kHU)
 Inverter frequency: $\geq 200\text{kHz}$
 The system has a color human body graphic LCD touch screen, real-time adjustment of exposure parameters
 Tube voltage: 40–120kV
 Dynamic plate detector type: Amorphous silicon CsI flat panel detector
 Along the arc sliding: $\geq 130^\circ$
 Slip angle: $\geq -35^\circ \sim +95^\circ$
 Left and right swing: $\geq \pm 15^\circ$
 C-arm rotates around the horizontal axis: $\geq \pm 180^\circ$
 Pillar lift: electric, stroke: $\geq 400\text{mm}$
 The distance from the focus to screen: $\geq 1000\text{mm}$
 C arm opening size: $\geq 780\text{mm}$
 C arm arc depth: $\geq 740\text{mm}$
 Horizontal extension: $\geq 200\text{mm}$



AG-D700A

High Frequency Mobile Digital C-arm System

Main frame of C-arm (Four-dimensional electric): 1pc
 X-ray generator and high frequency inverted power supply: 1pc
 Toshiba 9" image intensifier: 1pc
 Medical Mega-pixels digital CCD camera: 1pc
 CCU: 1pc
 Digital Acquisition and Processing workstation: 1pc
 19" LCD monitor: 2pc
 Imported minigroove grid: 1pc
 Electric adjustable collimator: 1pc
 Human graphical LCD touch screen: 2pc
 Hand parameter controller: 1pc
 Hand Mechanical movement controller: 2pc
 Foot brake for exposure: 2pc
 Red light cross localization: 1pc
 Film hanger: 1pc



AG-7300D

Medical Diagnostic X-ray System, Digital Radiography Equipment

Digital high frequency medical surgical X-Ray equipment can meet different parts radiography, such as head, chest, abdomen, waist, lumber, thoracic, pelvis, limbs etc. And meet different positions radiography, such as lay decubitus, normotopia, side position etc.

AG-8500C

High Frequency Digital Radiography System

Newly designed U-arm frame: 1pc

High frequency and high voltage X-ray generator: 1pc

China X-ray tube: 1pc

China 17" * 17" digital detector: 1pc

Image processing workstation: 1pc

24" High-definition LCD: 1pc

Human graphical parameter setting program: 1pc

High frequency inverter power supply electronic cabinet: 1pc

Symmetry adjustable collimator with light: 1pc





SZSN-DC

Mammography Machine

The machine we used for breast mammogram exam is called mammography machine. It is a device which houses the tube where x-rays are produced and pass through the breast, leaving electronic x-ray transfer to digital signals on a flat panel detector which produces the images. For film screen mammography, the images would be produced directly on breast film. The mammogram imaging would be revised by experienced doctors or physicians carefully.



AG-Femaray

ME Digital Mammography X-Ray Imaging Systems

Amorphous silicon flat panel detector
Pixel matrix: $\geq 3072 \times 4096$ pixels
Vertical range: 650mm – 1300mm ($\pm 5\%$)
Rotation angle: $-90^\circ \sim +90^\circ$ ($\pm 2^\circ$)
Nominal power/Maximum power: 4.8kW/5kW
Focus size: 0.1mm/0.3mm
Focus power: small focus: ≥ 2 kW
large focus: ≥ 8 kW



KD-DYS-M

Dental X-ray Mobile Unit

Voltage: AC 220V $\pm 10\%$
Frequency: 50/60Hz
Electric Plug: Three-core (international/ European standard)
Ultimate Capacity: 900VA
Electric Current: 4A
Fuse: 6.3A
Focus: 0.8mm
Rated High-Voltage: 70KV $\pm 10\%$
Tube-Head Current: 7mA $\pm 15\%$
Anode Angle: 19°
Load Cycle: 1/60
Half Value Layer: 70KV 1.6mmAl
Inherent Filtration: ≥ 2.1 mmAl
Radiation Leakage: $1\text{m} < 0.07\text{mGy/h}$



AG-1100

Animal Medical Diagnostic X-ray System

Standard configuration	
X-ray tube	1 set
Mainbody: VET1100	1 set
Workstation 24" computer	1 set
17*17" FPD	1 set
Workstation software	1 set

MRD-01 4K

Ultra HD Fluorescence Imaging Laparoscope System



- 4K Image Processing Unit: Smart Eye101C(4K White Light + NIR)
- LED/NIR Source: LED White Light + ICG Excitation Light
- 4K Camera Head: Sony 4K UHD COMS, 8,570,000 Pixels
- 4K Laparoscope: 10mm, 0°or 30°, Autoclavable
- Monitor: 32° 4K medical grade, 16:9, 3840*2160

OM-822C

Hospital Laparoscopy System



- Image sensor: 1/2.8 high sensitivity CMOS
- Resolution: 1920(H)*1080(V) 60 frames
- White balance: AWC (automatic white balance control) and manual control
- Bulb parameters: 100W LED light
- Color temperature: 6500K
- Illumination: ≥1400,000LX
- Display: 24–inch LED display
- Input signal: HDMI, DVI, VGA, CVBS, USB (3G/SDI optional)

MRD-02 4K

Ultra HD Fluorescence Imaging Laparoscope System



- 4K Image Processing Unit: Smart Eye101D(4K White Light)
- LED/NIR Source: LED White Light
- 4K Camera Head: Sony 4K UHD COMS, 8,570,000 Pixels
- 4K Laparoscope: 10mm, 0°or 30°, Autoclavable
- Monitor: 32° 4K medical grade, 16:9, 3840*2160

MRD-03

Ultra HD Fluorescence Imaging Laparoscope System



- NIR Camera Control Unit: Smart Eye101(White Light + NIR)
- LED/NIR Source: LED White Light + ICG Excitation Light
- Camera Head: 3,140,000 Pixels
- NIR Laparoscope: 10mm, 0°or 30°, Autoclavable
- Monitor: 27° medical grade, 16:9, 1920*1080



EMV-200

Video Gastroscope

- View of field 140°
- Diameter of distal-end Ø9.8mm / 9.2mm
- Depth of field 3–100mm
- Range of bending UP210°;Down90°;L/R100°
- Working length 1035mm
- Resolution 440,000 Pixels
- Screen display Full screen
- Configuration EMV-200
- EMV-3000 image prcesser
- LG-400 light source
- 15" LCD monitor
- Trolley



EMV-400

Video Colonoscope

- View of field 140°
- Diameter of distal-end Ø12.0mm
- Diameter of clamp aperture Ø 3.2mm /3.7mm
- Depth of field 3–100mm
- Range of bending UP180°;Down180°;L/R160°
- Working length 1680mm
- Resolution 440,000 Pixels
- Screen display Full screen
- Configuration EMV-400
- EMV-3000 image prcesser
- LG-400 light source
- 15" LCD monitor
- Trolley



XZLC-001

Colposcope

- Viewing angle: 45° oblique
- Eyepiece magnification: 16X
- IPD range: 50mm–80mm
- Diopter adjustment ± 5D
- Objective lens focal length: F = 300mm
- Zoom system: 0.4X, 0.66X, 1X, 1.5X, 2.5X five times zoom
- Total magnification: 2.7X, 4.4X, 6.6X, 10X, 16.6X
- Line view: 90mm, 55mm, 37mm, 24mm, 15mm
- Trimming distance: 60mm
- Lighting system: 10W LED lights coaxial lighting, brightnessadjustable, illumination> 30000LX
- Filter: Built-in green and blue filters
- Bracket: clawed disc upright bracket, with casters, easy to move, highly adjustable, disc built-in circuit board
- With a beam splitter, camera connector, can be connected to 1/3 inch C interface camera
- Input power: AC100V–240V
- Optional: Teaching mirror, camera, SLR camera connector, monitor, Large objective lens (F=230mm and F=280mm)



XZLC-002

Digital Electronic Colposcope

- Camera 1/2.8" sony CMOS
- Total pixels ≥8,000,000 pixels
- Scanning system Interlaced scanning
- Image size 1920*1080
- Frame (1920*1080)30p(1920*1080)25p
- Horizon resolution ≥950 lines
- SNR ≥50dB
- Focus (zoom ratio) f=4.7(wide end)~f=94mm(far end)
- Focusing way Automatic or manual
- Object distance 300mm–500mm
- Magnification times Optic 25 times, digital 12 times
- Signal output SDI
- White balance Automatic white balance or manual
- LED light source illumination ≥1200Lux



XZLC-003

Digital Electronic Colposcope

- Standard Configuration: Luxury medical cart*1
- 2,000,000 pixels Sony CCD camera set*1
- Camera bracket*1
- Handle control*1
- Videoline*1
- English colposcope software*1
- Power line*1
- Computer(2G memory,500G hard disk:22inchscreen)*1
- Keyboard*1 Mouse*1



OM-6650-1

Colposcope Colposcopy Digital Imaging Processing System

- Total Pixels: 3270000 pixels
- Imager: 1/2.8 Sony CMOS
- Frame: Rate(1920*1080) 25p
- SNR: ≥50dB
- Video signal
- Horizontal Resolution: ≥ 1080 TVL
- Light source intensity: ≥ 1200lux
- Field of vision: 2.5mm–20mm–320mm



PD01

Protective Clothing

Size length width applicable body

S: 85cm*55cm 150-160cm

M: 90cm*55cm 165-170cm

L: 100cm*60cm 170-180cm

XL: 110cm*60cm 180-185cm

Protective performance parameter:

Lead equivalent 0.25mmPb; 0.35mmPb; 0.5mmPb

Shield effectiveness 96%; 97.5%; 98.5%



PD04

Protective Clothing

Size length width applicable body

S: 85cm*55cm 150-160cm

M: 90cm*55cm 165-170cm

L: 100cm*60cm 170-180cm

XL: 110cm*60cm 180-185cm

Protective performance parameter:

Lead equivalent 0.25mmPb; 0.35mmPb; 0.5mmPb

Shield effectiveness 96%; 97.5%; 98.5%



PD05

Protective Clothing

Size length width applicable body

S: 85cm*55cm 150-160cm

M: 90cm*55cm 165-170cm

L: 100cm*60cm 170-180cm

XL: 110cm*60cm 180-185cm

Protective performance parameter:

Lead equivalent 0.25mmPb; 0.35mmPb; 0.5mmPb

Shield effectiveness 96%; 97.5%; 98.5%



PD06

Protective Clothing

Size length width applicable body

S: 85cm*55cm 150-160cm

M: 90cm*55cm 165-170cm

L: 100cm*60cm 170-180cm

XL: 110cm*60cm 180-185cm

Protective performance parameter:

Lead equivalent 0.25mmPb; 0.35mmPb; 0.5mmPb

Shield effectiveness 96%; 97.5%; 98.5%



BP-3003

Protective Glass

Material: Nylon frame + PC anti-fog lens

Product Size: 147mm* 53mm



BP-3009

Protective Glass

Material: PC frame+PC Anti-fog Lens

Product Size: 160mm*58mm



BP-3058-2

Protective Glass

Material: Silicone frame+PC Anti-fog Lens

Product Size: 147mm*90mm



BP-3058-4

Protective Glass

Material: PVC frame+PC Anti-fog Lens

Product Size: 145mm*85mm



PG01-1

LEAD SCREEN (SINGLE PANEL)

Material #304 stainless steel or iron with electrostatic spraying.

The size be customized according to your requirements.



PG02

LEAD SCREEN

Width: 665mm

Height: 750mm



PG05-1

FILMS-STORING CABINET

Length: 860mm

Width: 570mm

Height: 880mm



AG-KL001

LED X Ray Medical Film Lamp

Size: External dimensions: 820*520mm

Film-viewing area(mm): 720*440mm

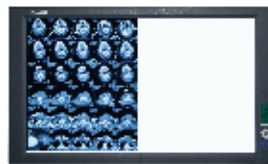
Color temperature: 9000±300K

Service life: 80,000 hours

Average brightness: 300 cd/m²–4000 cd/m²

Average illuminance: 900 lux–13,000 lux

Brightness uniformity coefficient of viewing screen: ≥90%



ZG-2

Super Bright LED Dual View Film Viewer

Outside frame: 840*502*38mm

Reading size: 720*422mm

Input voltage: AC90–240V

Power per unit: ≤30W

Super bright LEDs: 572



ZG-3B

Ultra-Thin LED Triple View Film Viewer

Outside frame: 1200*505*25mm

Reading size: 1080*425mm

Input voltage: AC90–240V

Power per unit: ≤30W

Super bright LEDs: 144



OM-2710

Medical Monitor

Screen: 601.9mm*304.4mm

Dimension: 650mm*356mm

Pitch: 0.3114mm*0.3114mm

Resolution: 1920*1080

Contrast: 1500:1

Brightness: 400cd/m²



LC-MS19001

19Inch Grayscale Monitor

Display Size: 376.32mm*301.06mm

Resolution: 1280x1024

Dot Pitch: 0.294mm*0.294mm

Response Time: 14ms

Brightness: 1000cd/m²

Contrast: 900:1

Color: 4096 Grayscale



LC-MS27002

27" 4M Colorful Monitor

Display Size: 596.74mm*335.66mm

Resolution: 2560*1440

Dot Pitch: 0.2331*0.2331mm

Response Time: 12ms

Brightness: 350cd/m²

Contrast: 1000:1



AG-MRI1.5

The 4 Generation of Superconductive MRI System

Short bore magnet with zero liquid helium "0" boil-off technology;

Powerful and high linearity gradient system;

High efficiency RF system combined with Dual-engine parallel acquisition technology;

Multi-channel phased array receiving coil with intelligent identification ;

Soft sound technology decreases the noise of scanning;

Complete clinical application package to meet all your clinical needs.



XC-310

4°C Blood Bank Refrigerator



YC-200

2~8°C Pharmacy Refrigerator



YCD-265

Pharmacy Refrigerator with Freezer



YR/FL800

2~8°C Medical Refrigerator



DW-25L116

-25°C Deep Freezer



YR-33L

Cold Storage Box



LTT-600
Water Bath (3 Usage)



LYZ-103B
Shaking Incubator



LYZ-1102
Shaking Incubator
(Double Door)



LI-420
Heating Incubator



WJ-2
CO2 Incubator



LDS-275Y-N
Medicine Stability



LBI-200
Cooling Incubator



LAC-1075-N
Climate Chamber



LTH-175-N
Constant Temperature
& Humidity Chamber



XSP-02

Biological Microscope



XSP-102V

Biological Microscope



XSP-100E

Biological Microscope



XSP-100SM

Biological Microscope



ST-4024-2L

Biological Microscope

Form a clear upright stereo image of the object

Show the true color difference of the object

45°tilting, binocular observation head

Single vision adjustment range is ± 5 diopters

Interpupillary distance adjustment range: 55–75mm

The objective lens adopts shift design, there are 2X / 4X, 1X / 2X, 1X / 3X to choose

Electric lighting system 230V or 115V, 12V / 10W incandescent lamp, 12V10W halogen lamp and high brightness LED

ZJXT-X-6A

Medical Operating Microscope

Fit for neurosurgery, spinal surgery, vascular, plastic and reconstructive surgeries.

Can be used by 2 doctors at the same time.

With integrated digital recording system, it is also fit for teaching.

Continuously zoom. Control by knob and foot panel or knobs.

The change of zoom is smooth.

Rapid focusing on small increases, the retarded focusing on great increases.

With 3 kinds of objectives, fit for different depth surgery.

Four groups of illumination. Control by knob and foot panel.

Turning of extension hand around the axis.

The support can keep balance at any place.

Automatic balancing of the microscope.

Multifunctional Control panel on the support.





D2012PLUS

High Speed Mini Centrifuge



D3024

High Speed Micro-Centrifuge



DM0408

Low Speed Centrifuge



AG-D0037

Low Speed Centrifuge

PATIENT MONITOR



AG-BZ014

Medical Multi-Parameter Patient Monitor

Size: 12.1 inches

Color: white

Main function: detecting ECG/blood oxygen/pulse rate/body temperature/blood pressure/heart rate/respiration



AG-BZ026

Multi-Parameter Patient Monitor

Size: 12.1 inches

color: white

Main function: detecting ECG/blood oxygen/pulse rate/body temperature/blood pressure/heart rate/respiration



LCX-PM80B

Vital Signs Monitor

8 inch high resolution

Color TFT display

Detecting ECG/blood oxygen/pulse rate/body temperature/blood pressure/heart rate/respiration



KT-CMS5100

Patient Monitor

NIBP, SpO2&PR, and TEMP monitoring of adult, pediatric and neonate of all ages

Built-in rechargeable lithium polymer battery

2.8" (320x240) true color TFT LCD screen



LCX-PM80D

Vital Signs Monitor

8 inch high resolution

Color TFT display

Adjustable audible and visual alarms Built-in rechargeable lithium battery

FETAL MONITOR



AG-BZ011

Medical Series Fetal Monitor

Foldable 12.1 inches high-brightness LED display, touch screen (optional)
Large capacity storage space, 8640 hours memory for fetal traces
Configurable audible and flashing fetal heart rate alarms
Support HL7 (Health Level Seven, optional)



AG-BZ012

Medical Series Fetal Monitor

Folded 10.4 inches high-brightness screen TFT LED, touch screen (optional)
12-crystal pulse doppler transducer (waterproof probes for option)
Large capacity storage space, 8640 hours memory for fetal traces



KT-CMS800G

Fetal Monitor

Color LCD, 60° convertible screen
Area mark for normal FHR(120 BPM~160 BPM)
Alarm for abnormal FHR
Optional twins monitoring
9-crystal and broad beam transducer



BF-600+

Fetal Doppler

LED display the FHR
Built-in high-capacity rechargeable battery, can last over 8 hours
Single unit Size: 38*28*20cm



AG-AM001

Operating Room Equipment Anesthesia Machine

Power supply: 100-240V
 Gas source: O₂, N₂O
 Ventilation mode: IPPV, A/C, SIMV, SIGN, MANUAL
 Monitor parameters: freq, vt, MV, paw
 Graphical display: P-T
 Vaporizer: halothane, enflurane, isoflurane, sevoflurane



AG-AM003

Anesthesia Machine

Gas source: O₂, N₂O, AIR
 Pressure: 280kPa-600kPa
 Voltage: 100-240V
 Power frequency: 50/60Hz
 Input power: 80VA
 Vaporizer: halothane, enflurane, isoflurane, sevoflurane



AG-AM005

Anesthesia Machine

Gas source: O₂, N₂O, AIR
 Pressure: 280kPa-600kPa
 Voltage: 100-240V
 Power frequency: 50/60Hz
 Input power: 80VA
 Vaporizer: halothane, enflurane, isoflurane, sevoflurane



AG-DM6B

Veterinary Anesthesia Machine

Gas source: O₂
 Pressure: 280kPa-600kPa
 Voltage: 100-240V
 Power frequency: 50/60Hz



AG-DM6C

Veterinary Anesthesia Machine

Flowmeter: O₂ (0~5L/min)
 Rapid oxygen supply: 25L/min~75L/min
 Airway pressure: 0cmH₂O~100cmH₂O
 Gas source: O₂
 Pressure: 280kPa~600kPa



AG-DM6A

Veterinary Anesthesia Machine

1.Gas source: O₂, N₂O
 2.Pressure: 280kPa-600kPa
 3.Voltage: 100-240V
 4.Power frequency: 50/60Hz



510S

Emergency Transport Ventilator (Without Cylinder)

1. Pressure value: ppeak, PEEP
2. Volume/flow value: Vt, MV
3. Time value: ftotal
4. Real time curves: Pressure-Time, Flow-time



DS-6

Auto CPAP Ventilator

Work Mode: CPAP, Auto
 Sound: ≤ 28 dB
 Screen: 2.8inch TFT, 320*240
 Pressure Range: 4–20cm H₂O, auto adjustment
 Power Supply: Input 100–240V, 50–60Hz, 1–2A; Output +24V, 2.5A
 DC Voltage: 24VDC, 2.5A



AG-HXJ03

Medical Ventilator

Gas source: O₂, AIR
 Pressure: 280kPa–600kPa
 Voltage: 220V±22V
 Power frequency: 50Hz ± 1Hz
 Input power: 900VA (with air compressor)
 250VA (without air compressor)
 Ventilation mode: IPPV, A/C, PCV, SIMV,
 SPONT/CPAP, PSV, SIGH, MANUAL



AG-HXJ200A

CPAP System Medical Ventilator

Gas source: O₂, Air
 Pressure: 280kPa – 600kPa
 Voltage: 100 – 240V
 Power frequency: 50Hz ± 1Hz



AG-HXJ200D

CPAP System Medical Ventilator

Oxygen concentration: Adjusting range:
 21% – 100%
 CPAP: Adjusting range: 0cmH₂O–10cmH₂O
 Continuous flow: Adjusting range:
 1.5L/min – 15L/min
 Gas source: O₂, Air
 Pressure: 280kPa – 600kPa



V6

ICU Ventilator Crius

Input voltage: 110 to 240V ~ ±10%,
 50 / 60 Hz AC or 24VDC±10%
 Power consumption: 50W typical
 Protection class: Class I
 Backup battery: 2 batteries(5200mAh each)/
 hot swappable
 Oxygen supply: 280 to 600 kPa (41 to 87 psi),
 120 L / min
 Low pressure: Oxygen ≤ 15 L / min, max.
 600 hPa for low pressure



VG70

Optimal Combination of Invasive and Noninvasive Ventilator

Screen: 12" TFT color touch screen (detachable)
 Supply Gas: O₂, 0.28–0.6 MPa
 Power Supply: AC100–240 V, 50 Hz/60 Hz
 Communication Interface: RS-232 Port, Nurse call
 Port, Ethernet Port
 Ventilation Modes:
 VCV(A/C) PCV(A/C) PRVC SIMV(VCV)+PSV
 SIMV(PCV)+PSV SIMV(PRVC)+PSV SPONT/CPAP+PSV
 BIVENT+PSV NIV/CPAP NIV-T NIV-S/T



FDK-121

Mesh Nebulizer

Microporous direct atomization technology, tiny particles(3–5microns)
Ultra-quiet, low power consumption, built-in lithium battery
Almost without residual liquid
Mini design, easy to carry
Two modes of automatic turn off by 5 or 10 minutes



FDK-125

Mesh Nebulizer

Microporous direct atomization technology, tiny particles(3–5microns)
Ultra-quiet, low power consumption, built-in lithium battery
Almost without residual liquid
Mini design, easy to carry
Two modes of automatic turn off by 5 or 10 minutes



FDK-520A

Ultrasonic Nebulizer

Elegant and portable design
Cure some asthma, chronic obstructive pulmonary disease (COPD) through aerosolization
Two air flow control
Suitable for all kind of people with various age
Standard: color box, 2 mouth pieces, 1 adult and 1 child mask, Extension tube, 5 reusable medication cups, AC adapter



FDK-580

Ultrasonic Nebulizer

Elegant and portable design
Cure some asthma, chronic obstructive pulmonary disease (COPD) through aerosolization
Two air flow control
Suitable for all kind of people with various age
Standard: color box, 2 mouth pieces, 1 adult and 1 child mask, Extension tube, 5 reusable medication cups, AC adapter



FDK-CNB69006

Compressor Nebulizer

Liter flow range: > 6.7lpm
Maximum nebulization rate: $\geq 0.25\text{mL/min}$
Sound level: $\leq 65\text{dB(A)}$
Particle size: 0.5–10 μm
MMAD: $\leq 5\mu\text{m}$
Operation pressure range: 9.5–19PSI
Compressor pressure range: 22–58PSI



FDK-CNB69007

Compressor Nebulizer

Liter flow range: > 6.7lpm
Maximum nebulization rate: $\geq 0.25\text{mL/min}$
Sound level: $\leq 65\text{dB(A)}$
Particle size: 0.5–10 μm
MMAD: $\leq 5\mu\text{m}$
Operation pressure range: 9.5–19PSI
Compressor pressure range: 22–58PSI



FDK-CNB69009

Compressor Nebulizer

Liter flow range: > 6.7lpm
Maximum nebulization rate: $\geq 0.25\text{mL/min}$
Sound level: $\leq 65\text{dB(A)}$
Particle size: 0.5–10 μm
MMAD: $\leq 5\mu\text{m}$
Operation pressure range: 9.5–19PSI
Compressor pressure range: 22–58PSI



FDK-CNB69010

Compressor Nebulizer

Liter flow range: > 6.7lpm
Maximum nebulization rate: $\geq 0.25\text{mL/min}$
Sound level: $\leq 65\text{dB(A)}$
Particle size: 0.5–10 μm
MMAD: $\leq 5\mu\text{m}$
Operation pressure range: 9.5–19PSI
Compressor pressure range: 22–58PSI



FDK-CNB69012

Compressor Nebulizer

Liter flow range: > 6.7lpm
Maximum nebulization rate: $\geq 0.25\text{mL/min}$
Sound level: $\leq 65\text{dB(A)}$
Particle size: 0.5–10 μm
MMAD: $\leq 5\mu\text{m}$
Operation pressure range: 9.5–19PSI
Compressor pressure range: 22–58PSI



FDK-CNB69021

Compressor Nebulizer

Liter flow range: > 6.7lpm
Maximum nebulization rate: $\geq 0.25\text{mL/min}$
Sound level: $\leq 65\text{dB(A)}$
Particle size: 0.5–10 μm
MMAD: $\leq 5\mu\text{m}$
Operation pressure range: 9.5–19PSI
Compressor pressure range: 22–58PSI



KT-NEJ01

Compressor Nebulizer

Small in particle size, easy to absorb
Moderate in nebulization rate, which reduces medication waste
Long in air tubing, convenient and flexible to use
Low in medication residue, high in nebulization rate, less in medication waste
Compact and lightweight design, convenient to carry
Low in noise, which reduces interference to environments
Built-in oil-free compressed vacuum pump, safe and durable to use



AG-D25AM

93% Oxygen Purity Oxygenator
Suppliers and Manufacturers

Oxygen flow: 0.5–5 LPM
Oxygen purity: 93%±3%
Power consumption: <320 W
Output pressure: 0.05–0.07Mpa
Operation noise(dB): <45dB (A)
Operating temp: 5°C--40°C



JAY-5BW

Oxygenator

Flow Rate: 0–5LPM
Purity: 93% (±3%)
Outlet Pressure: 0.04–0.07Mpa
Sound Level: ≤43dB
Power Consumption: ≤400W
LCD Display: Switch times, operating pressure, present working time, accumulated working time, presetting time from 10mins to 40hours
Alarm: Power failure alarm, High&low pressure alarm



JAY-40

Oxygenator

Oxygen flow (L/min): 0–40
Outlet Pressure (Mpa): 0.04–0.07
Oxygen concentration: 93% (±3%)
Noise level (dB): ≤60
Power: AC220V/110V (±10%), 50/60Hz (±1Hz)
Power Consumption: ≤2200W
LCD display: Starting times, operating pressure, present working time, accumulated working time, preset time from 10mins to 40hours
Alarm: Power failure alarm, high/low pressure alarm



YF-30L

Oxygen Tank



YF-05H

Wall Fixed Type Oxygen
Flowmeter with Humidifier



HZZD-YTQ-B

Automatic Tourniquet
System



HZZD-YTQ-E

Automatic Tourniquet
System



HZZD-YTQ-F

Automatic Tourniquet
System



WZYH-403-1

Tourniquet



AET-1F1

Infrared
Thermometer



DMN-K3

Thermometer



LCX-F04

Infrared
Thermometer



MDW-208

Forehead
Thermometer



DYHL-012

Desktop
Sphygmomanometer



KT-CMS50DL

Pulse Oximeter



KT-08A

Electronic
Sphygmomanometer



KT-CMS50E

Pulse Oximeter



KT-CMS60D-VET

Pulse Oximeter



KT-CMS70A

Pulse Oximeter

ELECTROCARDIOGRAPH



AG-BZ009

Multifunction 12 Channel White ECG

Display: 1024*600 10-Inch Color touchscreen display
Operation modes: Manual/Auto/Arrhythmia Analysis Modes
Power supply: Adapt 110–240V, 50/60Hz AC
12 channel ECG machine with interpretation
2-lead ECG simultaneous acquisition
12-channel recording with a rhythm lead
Digital filters eliminate EMG, AC, Baseline Drift interference
Built in rechargeable Li-ion battery, 2 hours continuous working
Built in USB/RS232 interface



AG-BZ010

Hospital Electrocardiograph 3 Channel ECG

Display: 4.3inch 480x272 color graphic LCD display
Operation modes: Manual/Auto/Arrhythmia Analysis Modes
3channel ECG machine with interpretation
80mm 3-channel recording with a rhythm lead



AG-BZ016

Hospital Multifunction 6 Channel White ECG

Display: 480*800 7inch touch-screen display
Operation modes: Manual/Auto/Arrhythmia Analysis Modes
Power supply: Adapt 110–240V, 50/60Hz AC
Six channel ECG machine with interpretation
6-channel recording with a rhythm lead



KT-TLC5000

Dynamic ECG Systems

Real-time store ECG data for 24-hour
Sync analysis for 12-lead
Flexible atrial fibrillation analysis



KT-ECG90A

Electrocardiograph

Sync collection for 12-lead ECG
Display of 3/6/12-lead ECG, print mode,
sensitivity, paper speed and filter state



XYQ-5

Tilting Table

Size: 2050*840*790mm.
Standing angle: 0°~90°.
Pedal Up & Down adjusting angle: -25°~25°



EL03

Robin Electric Treatment Table

Size: 1950*660*(480~940)mm
One electric motor, standard supports "Timotion" brand for Hi-Lo function
Adjustable head section featuring single gas strut, angle adjustable from -90° to +40°
Adjustable backrest featuring double gas struts, angle adjustable from +0° to +90°



JYZ-III

multifunctional Traction Bed

Traction distance: 0~200mm adjustable
Lumber traction: 0~990N adjustable
Traction time: 0~99min adjustable



JYZ-IB

Multifunctional Traction Bed

Lumber traction: 0~990N adjustable
Cervical traction: 0~200N
Cervical traction distance: 0~300mm
Waist heat therapy: less than 50°C
CE certified



EL02W

Electric Bobath 2 Section Table

"Timotion" brands motor for High-Low function.
Height control from 48cm to 94cm by footbar system.
Adjustable backrest featuring double gas strut, angle adjustable from -20 ° to + 80°.



AG-ECC16

Electric Hi-Lo Tilt Table for Adult

Two electric motors



HSHD-001

Manual Traction Bed

Neck: 0~20kg, waist: 0~80kg
Product size: 1900*560*510mm
Bearing weight: 170kg



YH-QY-02

Traction Chair

Static load capacity of traction chair: 100 kg weight is placed on the chair board for 6 h, which is stable and free from shaking, and the whole traction chair shall not be deformed
Product height: 1820mm



PD-EPL
Electric Patient Lift
System
Size: 1290*690*330mm



JY-ZGQ-1
Elbow Quadriceps2-in-1
Training Chair
Size: 1400* 950* 1150mm



JY-XBC
Adult walker
Size: 700*600*(1100-1320)mm



JY-ZGQ
Elbow Traction
Training Chair
Size: 135 * 100 * 115cm



JY-JDC
Rehabilitation Bed
Size: 2050*650*(510-890)mm



JY-ZLC-03
Standing Training Bed
Size: 2020*810*1080mm



JYE-ZLC-A1
Multifunctional Standing
Trainer for Children
Size: 1450*650* 1050mm



JY-JZB-4A
Weight Loss Gait
Trainer
Size: 136 * 162 * 248cm



JYE-ZLJ-5
Children's Lower Limb
Training Stand
Size: 1200*950*1500mm



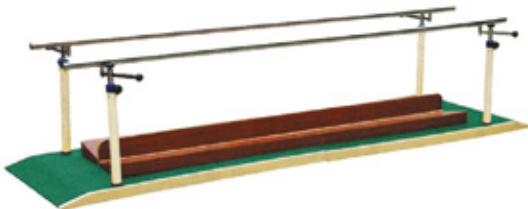
JYE-PBQ
Children Rehabilitation
Treadmill Outdoor Children
Home Fitness Training
Stepper
Size: 820*630*980cm



KAS-16
Stander (Children's Split
Leg Type)



JYE-ZLJ-2
Child Standing Trainer
Size: 800*650*1230mm



JY-PHG
Balance Bar
Size: 3260*(850-1200)*(710-950)mm



JYE-XFT-1
Two-Way Training Escalator
Size: 2900*710*(1100-1370)mm



XY-DSXB-03A
Back Extension



XY-DSXZ-03A
Leg Curl



XY-DSXZ-02A
Abductor



XY-DSSZ-01A
Shoulder Press



XY-KGJ-2
Hip Joint Training Device



XY-ZBD-ID
Passive And Active Exerciser
For Upper Limb



YTK-E
Knee Traction CPM (for knee,
ankle and hip)



XY-K-M2
Gait Training Device With
Medical Treadmill



XY-14-8B

Multifunctional Trainer

Shoulder joint convolution training exerciser
Forearm rotation exerciser
Wrist extension&flexion exerciser
Shoulder ladder
Pulley ring exerciser
Traction net frame
Training table
Pulley weights



XY-101C

Hand Rehabilitation Training System

Twelve training modes: horizontal pulling training, finger extension/flexion training, grasp training, finger extension training, finger symmetry training, finger holding training, forearm rotation training, finger pinching training, thumb strength training, wrist ulnar/radial deviation training, wrist extension/flexion training, finger lifting training

Four independent screens enable four patients take training simultaneously

Resistance adjustable: 500g-2500g

Interactive games

Customized training plan is available

Evaluation report is automatic formed and printed

Size: 1500*1500*1140-1540mm; table height: 670-1070mm



KD-1

Balance Testing and Training System

Diagonal screen size: 21inch

CPU: Intel Pentium Dual Core E5800

CPU frequency: 3200MHz

Memory size:2GB DDR3

Capability of hard disk: 500GB

Graphics chip: Intel X4500 HD

CD-ROM type: DVD-ROM

OS: Windows 7 Home Basic

Graphics type: integrated graphics

Software detailed parameters



XY-1

Static Bike

Range of cushion: 0-230mm
Rated loading: 150Kg
Damping device: 8
Size: 900*450*1060mm



NTLHK-021

Trampoline

Size: 44inch
Height: 260mm(from the ground)



NTLHK-101

Multi-Function Horizontal Bar

Material: Steel tube + foam
Bearing Capacity: 150KG



NTLHK-001

Yoga Ball

Diameter: 650mm
Material: PVC
Standard: with air pump&air lock



NTLHK-003

Half-Round Balance Ball

Diameter: 600mm
Material: PVC+ABS



NTLHK-006

Massage Ball

Diameter: 70mm
Material: PVC



NTLHK-016

Yoga Mat

Size: 1730*610mm
Material: PVC



NTLHK-054

Sandbags

5kg, 10kg, 15kg, 20kg



NTLHK-062

Exercise Bag

5kg, 8kg, 10kg, 12kg, 15kg, 20kg, 25kg



NTLHK-027

Dumbbell

0.5kg, 1kg, 2kg, 2.5kg, 4kg, 5kg



NTLHK-033

Exercise Ball

1kg, 2kg, 3kg, 4kg, 5kg, 6kg, 7kg, 8kg, 9kg, 10kg



NTLHK-097

Push-up Stand

Size: Diameter 200mm
Thickness 2.50mm



AG-908LJ

Aluminium Alloy Wheelchair

Alluminum alloy frame
Flip-up desk armrest
Detachable footrest



AG-863LAJPF4

Aluminium Alloy Wheelchair

Alluminum alloy light weight chair frame
Drop-back handle
Fixed armrest



AG-LY002

Hospital Electric Standing Wheelchair

Painted steel frame, upturned PU armrest,
removable guard plate, rubber foam front and rear wheels,
equipped with safety lights



AG-LY123-43

Medical Electric Wheelchair

Material: Spray plastic steel frame
Adjustable detachable PU armrest
Equipped with a safety lamp



AG-LY110A

Medical Electric Wheelchair

Material: Spray-folding steel frame
Rear bending handrail
Detachable foot rest
Rubber front and rear wheels
Load-capacity: 110kg



AG-LY001

Hospital Wheel Chair

Pipe: steel
Rear wheel diameter: $\phi 22 \times 1.2$
Front wheel diameter: $\phi 30 \times 2.0$
Rear Wheel: 24 inch PU + nylon wheel drum
Front wheel: Solid 6-inch
Total width: 675mm



AG-803LB

Aluminium Alloy Wheelchair

Alluminum alloy frame
Flip-up armrest
Solid castor



LY338-4

Wheelchair(Can be Half-Lying)

Length: 1030mm
Vehicle height: 890mm
Vehicle width: 680mm
Seat width: 460mm



LY338-12

Child with Cerebral Palsy Wheelchair

Material: aluminum alloy frame
Sponge cushion
Hydraulic design



LY338-16

Hand Tricycle

Cushion material: leather

Frame material: thick steel pipe paint frame

Seat width: 45cm

Armrest height: 77cm



PL-10

Electric Crawler Climbing Machine

Size: 1310*1200 (800)*660 (excluding foot hanging)mm

The feet are not adjustable, the backrest is electrically adjustable, the imported motor, the imported control box, and the electric stand



PL-11

Electric Crawler Climbing Machine

Size: 1340 * 1210 * 650 (sitting)mm

920 * 1960 * 650 (590)mm (lying with armrests down)

The footrest and backrest can be electrically adjusted to lie flat, imported motor, imported control box, with toilet



AG-WC001

Hospital Aluminum Alloy Wheel Chair

Material: high quality 7003 aviation aluminum alloy pipes, thickness of 2.0 to 3.0



LY338-1

Hospital Wheel Chair

Sitting from the ground: 50cm

Wheelchair height: 89cm

Seat width: 45cm rear wheel diameter: 60cm



LY338-15

Hand Tricycle

The frame of the hand-cranked tricycle is made of thick steel pipes with strong stability.

Material: thick steel pipe

Vehicle length: 1700*950*750mm



AG-LY140
Electric Walker



AG-LY128
Electric Walker



AG-969H
Walking Aid



TRA01
Walker Aid



AG-965LH-B
Walking Aid



AG-969H
Walking Aid



AG-9145L
Walking Aid



AG-9634L
Walking Aid



AG-9636L
Walking Aid



AG-9637L
Walking Aid



AG-912L
Walking Aid



AG-913L
Walking Aid



AG-961L
Walking Aid



AG-9122L-A
Walking Aid



AG-9280L
Walking Stick



AG-9361L
Walking Stick



AG-920L
Walking Aid



AG-928L
Walking Stick



AG-9242L
Walking Aid



AG-9412L
Walking Aid



AG-9382L
Walking Aid



AG-9301L-1
Walking Aid



AG-9209L
Walking Aid



AG-933L
Walking Stick



AG-9112L
Walking Aid



AG-925L
Walking Stick



AG-LY894

Hospital Toilet Chair

Size: 500*230*760mm 7kg
Weight: 7kg



AG-699L

Commode Chair

Aluminum alloy frame
4 pcs casters, 2 with brake



AG-897

Commode Chair

Steel frame with plastic



AG-693

Commode Chair

Powder coating steel frame
Fixed armrest, foldable



AG-7921L

Bath Chair

power coating steel frame



AG-7986L

Bath Chair

aluminum alloy frame with plastic seat



LQX-040007

Shower stool

Material: aluminum alloy,
hard seat cushion
Adjustment: 8-stop adjustment



LQX-040002

Shower Stool

Material:aluminum alloy,washable cold-proof
foam soft cushion (thickness 5.5mm)
Adjustment: 3-stop adjustment



RC-2000I

Hypothermia Therapy Apparatus

Temperature Control Range: -4°C~40°C available to adjust, cooling speed is no less than 2°C/min

Blanket Surface Temperature

The temperature of cooling blanket or cooling cap is $\pm 1^\circ\text{C}$ around water temperature. Surface temperature unevenness is no more than 2 °C

Body Temperature Setting Range: 31 °C– 42 °C

Display Interface: Metal dome array control panel, LCD 240*128, LED backlight



XY-K-SISS-C

Dual Channeloutput Neurotrosis Therapy Muscle Stimulator With Trolley

Eight channels pulse output (low frequency impulse)

Intensity could be adjusted independently

Negative pressure: -38KPa



XY-K- SHOCKMAS

Extracorporeal Shock Wave Therapy

12.1" touch screen

Working frequency: 1~25Hz

Impact times: 100~9900 times, stepping 100 times

Impact pressure: 1~5.5bar

Six kinds of applicator: standard, frequency conversion, frequency conversion, deep, focused and acupoint.

200 preset prescription, customized unlimited

Built-in Human Anatomy



XY-K-SGN-1

Compression Therapy

Special for hand

2 treatment modes

Keeping time: 5s, 10s, 15s, 20s, 25s, etc

50~260mmHg

Double pumps



XY-K-SJD-B

Transcutaneous Electrical Nerve Stimulator Six Channels TENS Device

Six independent rectangular wave pulse output

Pulse frequency: 2~160Hz adjustable

Treatment time: 5min, 10min, 15min, 20min, 25min, 30min

Continuous output, slow intermittent output, fast intermittent output



FSLY-AJ07

Moxibustion Fumigation Instrument

Product specification: 400*400* H1350mm

Safety type: I class B

Rated voltage/frequency: 220V ~ 50HZ

Rated power: 200W

Temperature setting: 30~60°C

Time setting: 1~60min

Product weight: 9.5kg



CQJS-CQ-30

Far Infrared Physiotherapy Lamp



SZXL-003

Infrared Physiotherapy Lamp



SZXL-006

Infrared Physiotherapy Lamp



XYG-500IB

Digital Display Function
Infrared Therapy Device



XYG-500IVB

Physiotherapy And
Rehabilitation Equipment
Infrared And Laser
Therapy Device



XY-K-PZG-II

Physiotherapy And Rehabilitation
Equipment Infrared Polarized
Light Therapy



JYRX-10

Foot Washer



JYRX-03-25

Mobile Bath



B001

Back Correction

Size: S/M/L/XL/XXL

Color: white, black



H001

Neck Guard

Size: Free

N.W: 0.04KG

Packing Size: 380*390*730mm



H005

Knee Pads

Size: S/M

Color: blue, complexion, black



H006

Ankle Support

Size: Free



H004

Bracers

Color: blue, complexion, black



H007

Single Shoulder Pads

Size: Free



H010

Waist Support

Size: S/M/L/XL/XXL



T005

Abdominal Band

Size: S/M/L/XL

Color: Khaki, black



KDZJ-JZ-010

Cervical Collar Cervical Collar Flexible (Recommendation) New



KDZJ-ZB-004

Arm Sling(Enhanced)

Size: 270-400mm



KDZJ-ZW-001

Palm Wrist Orthosis

Size: S/M/L



KDZJ-ZW-002

Fixed Infusion Splint

S 12-18 M 18-24



KDZJ-KB-001

Adult Hinged Hip Anduction Orthosis

Waist circumference 700-1000mm



KDZJ-ZH-002

Adjustable Ankle-Foot Brace

S <19 M 20-26 L >27



KDZJ-XB-006

Knee Ankle-Foot Orthosis



SH-03

Adjustable Elbow Joint Fixation Brace



LS-50HD

Vertical Pressure Steam Sterilizer
(Digital Display Automation)

Technical data: LS-50HDI(automatic)

Chamber volume: 50L(φ340×550) mm

Working pressure: 0.22MPa

Working temperature: 134℃

Max working pressure: 0.23 Mpa

Heat average: $\leq \pm 1^{\circ}\text{C}$

Timer: 0~99min or 0~99hour59min

Adjustment of temperature: 105~134℃

Power: 3Kw/AC220V.50Hz

Overall dimension: 510*470*1130mm

Transport dimension: 590*590*1280mm

G.W/N.W: 88Kg/68Kg

ZJ-N8A

Automatic Table Top Autoclave

Volume: 40L

Consumed power: 1450W

Working pressure: 0.22MPa

Working temperature: 134 °C

Cavity size: $\phi 170 \times 360\text{mm}$

Dimension: 370*345*365mm

G.W: 34KG

Packing Size: 640*480*430mm



MW-KJ400

Air Sterilizer



AG-S1

Mobile Air Sterilization Station



FYTS-36H

Medical UV Air Sterilizer



FYST-30S

Medical UV Air Sterilizer



FYKX-B600

Medical UV Air Sterilizer



FYKX-Y1000

Medical UV Air Sterilizer



FYKX-G1200

Medical UV Air Sterilizer



KXD-B-600

Medical Plasma Air Sterilizer

Applicable volume: 60m³

Air volume: 600m³/h

Size: 900*380*160mm

Weight: 18 kg



KXZ-B-600

Medical Plasma Air Sterilizer

Appearance size: 900*380*160mm

Weight: 18 kg

Noise: 55 db (A) or less

Uv radiation illuminance: $\geq 17,000$ w/cm

Uv leakage: < 0.1 w/cm

The killing rate of bacteria in aerosol chamber was > 99.99%

The mean extinction rate of natural bacteria: > 90.00%

Input power: ≤ 155 W

Power supply: AC 220V 50Hz

Applicable volume: 60m³

Air volume: 600m³/h



KXD-Y-600

Medical Plasma Air Sterilizer

Appearance size: 280*390*660mm

Weight: 20 kg

Noise: 55 db (A) or less

The killing rate of bacteria in aerosol chamber was > 99.99%

The mean extinction rate of natural bacteria (disinfection time: 60min) was > 95.00%

Input power: ≤ 103 W

Power supply: AC 220V 50Hz

Applicable volume (m³): 60

Air volume (m³/h): 1000



KXD-X-600

Medical Plasma Air Sterilizer

Applicable volume: 60m³

Air volume: 600m³/h

Size: 620*620*355mm

Weight: 20 kg



KXZ-Y-1500

Medical Plasma Air Sterilizer

Applicable volume: 150m³

Air volume: 1500m³/h

Size: 520*450*1800mm

Weight: 65 kg



SQ-D-60

H₂O₂ Low Temperature Plasma Sterilizer (Ordinary Type)



SQ-D-100 H₂O₂

H₂O₂ Low Temperature Plasma Sterilizer (Ordinary Type)



SD-D-130

Automatic Plasma Sterilizer



SQ-D2-100

H₂O₂ Low Temperature Plasma Sterilizer (Cassette Type)



SQ-XH120

Ethylene Oxide Sterilizer



SQ-H40

Ethylene Oxide Sterilizer



SQ-H80

Ethylene Oxide Sterilizer



SQ-H600

Ethylene Oxide Sterilizer



SQ-E2

Ethylene Oxide Sterilizer



SQ-E3

Ethylene Oxide Sterilizer



SCAJ-004

Plasma Air Disinfection Machine



SCAJ-005

Plasma Air Disinfection Machine



SCAJ-006

Plasma Air Disinfection Machine



BHC-1300 II A2

(Single) Biological Safety Cabinet



LDO-9023A

Forced Air Drying Oven



LVO-0B (6020)

Drying Oven (Vacuum Oven)



DL-60D

Ultrasonic Cleaner
2L, 150*140*100mm



DL-180D

Ultrasonic Cleaner
6L, 300*150*150mm



DL-380E

Ultrasonic Cleaner
10.5L, 500*140*150mm



DL-120A

Ultrasonic Cleaner
3L, 240*140*100mm



DL-180A

Ultrasonic Cleaner
6L, 300*150*150mm



SB-300DTY

Ultrasonic Cleaner



JP-120ST , 38L

Ultrasonic Cleaner



JP-360ST, 135L

Ultrasonic Cleaner



JP-300G, 99L

Ultrasonic Cleaner



JP-600G, 264L

Ultrasonic Cleaner



JP-020S, 3.2L

Ultrasonic Cleaner



JP-080, 22L

Ultrasonic Cleaner



LCB-1BU

Clean Bench



LCB-1F

Clean Bench



DG-CL32 (3.2L,6.5L,10L)

Ultrasonic Cleaning Machine



DGZ-4L

Distilled Water Machine

Volume: 4L

Distillation volume: 1L/H



SK-O180-S

Shaker

Orbital diameter: 20mm

Max. load capacity (with platform) 3kg



RE100-S

Rotary Evaporator

Speed Range: 20-200rpm

Display (speed, temperature, time) LED



ZJ-YAZD-5 (5L, 10L, 20L)

Stainless Steel Water Distiller

Hydraulic discharge: 5L/h



ZJ-SZ-96

Glass Water Distiller

Hydraulic discharge: 1600ml/h
Single distillation



ZG-16

Electronic Chain 304 Stainless Steel Pass-Through Box

Inner dimension: 360*440*420mm



ZG-6

All 304 Stainless Steel Pass-Through Box

Inner dimension: 280*320*320mm

ENT EQUIPMENT



XAHY-002

Video Laryngoscope
Display Screen : 3.0 " full color LCD Monitor
Resolution: 960*480



SMT-I-B

Video Laryngoscope
LCD display 3"HD wide angle LCD



HJ-1

Laryngoscope
Size: 185MM,
Main function: check laryngoscope



BD-1

Nasoscope
Size: 175mm,
Main function: electro-optic nose



WZYH-402F6

Otoscope
Outer packing size: 610*415*415mm,
Main function: otoscopy



NBSF-002

Facial Features Checker Set
Size: the diameter of the tube
main function: facial feature check



SHMQ-001

Laryngoscope
Type A for adults
Large: Length: 165mm
Medium: Length: 135mm
Trumpet: Length: 105mm
Type B children
Large size: 100mm
Trumpet: 75mm



AG-XD207

Dialysis chair

Two motors control seat tilting, up and down respectively, another motor lets back and leg section move as unite

Head board and arm board are manual adjusted The chair can apply to various postures

Specification

Chair Dimension: 1700mm(Curve Length)*560mm

Height: 570mm(min.)–830mm(max)

Head section turn: $-15^{\circ} \sim 25^{\circ}$

Back section lift: $0 \sim 80^{\circ}$

Leg section turn: $0 \sim -90^{\circ}$

Arm board swing out: $0 \sim 45^{\circ}$

Arm board height adjustable: 100mm

Arm board slide: 100mm

Arm board declining angle adjustment: $-15^{\circ} \sim 10^{\circ}$

Arm board dimension: 450*160mm

Trendelenburg & reverse trendelenburg: $0 \sim 12^{\circ}$

Arm board concave radian: R108



AG-XD205

Manual Blood Collection Chair

Seat width: 600mm
 Seat width, including armrests: 880mm
 Total length: 1880mm
 Total weight: 70kg
 Height: 530mm
 Caster: 100mm
 Back cushion: 190*490*120mm
 Cushion: PU foam
 Upholstery: PVC leather
 Frame: Q235 steel
 Safe maximum load: 240kg
 Back segment angle: -12° – 75°
 Trendelenburg: -12°
 Leg segment angle: -80° – 12°



AG-XD208A

Manual Blood Collection Chair

Back Section: 0° – 75°
 Leg Section: -80° – 0°
 Size of castors: 4* ϕ 100mm
 Cushion: PVC
 Weight: 85kg
 Max weight: 200kg



AG-XD101

Electric Blood Collection Chair

Chair Dimension: 1700mm(Curve Length)*560mm

Height: 570mm(min.)–830mm(max)

Head section turn: $-15^{\circ} \sim 25^{\circ}$

Back section lift: $0 \sim 80^{\circ}$

Leg section turn: $0 \sim -90^{\circ}$

Arm Board swing out: $0 \sim 45^{\circ}$

Arm board height adjustment: 100mm

Arm board slide: 100mm

Arm board declining angle adjustment: $-15^{\circ} \sim 10^{\circ}$

Arm board dimension: 450*160mm

Trend and reverse trend: $0 \sim 12^{\circ}$

Arm board Concave Radian: R108



AG-XD107

Electric Blood Collection Chair

Introduction:

Chair Dimension: 1700mm(Curve Length)*560mm

Height: 570mm(min.)–830mm(max)

Head section turn: $-15^{\circ} \sim 25^{\circ}$

Back section lift: $-5 \sim 70^{\circ}$

Leg section turn: $-65 \sim 5^{\circ}$

Foot support telescopic: 100mm

Foot support turn: $0 \sim 90^{\circ}$

Fixed angle of seat section: 5°

Arm Board swing out: $0 \sim 45^{\circ}$

Arm board height adjustment: 100mm

Arm board slide: 100mm

Arm board declining angle adjustment: $-15^{\circ} \sim 10^{\circ}$

Arm board dimension: 450*160mm

Trend and reverse trend: $0 \sim 12^{\circ}$

Arm board Concave Radian: R108



AG-XD206B

Electric Blood Collection Chair

Total Length: 1950mm \pm 20mm

Seat width: 600mm(total width 900mm including armrest) \pm 20mm

Seat height: 580~800mm \pm 20mm

Backrest length: 870mm \pm 20mm

Leg rest length: 530mm \pm 20mm

Armrest Dimension: L540*W190*D(40x2)mm \pm 20mm

Height of armrest and seat: 200~250mm \pm 20m

Chassis Dimension: 930mm \times 680mm \pm 20mm

Pillow size: 400mm*230mm*80mm \pm 20mm

Backrest Adjustment: (-12°~75°) \pm 5

Legrest Adjustment: (-75°~12°) \pm 5°

Weight: 93KGS \pm 3KGS

Safe Maximum Load: 240KGS

Motor: 3



AG-KL01

Dialysis Chair

Backrest adjustment: -10°~75° \pm 5°

Legrest adjustment: -80°~12° \pm 5°

Realize the Trenberg position of plus or minus 12 degrees, can present the dialysis position of the legs greater than 12 degrees;

INSPECTION CENTER&CLINICAL EXAMINATION



H-TU01
Blood Collection Tube
1ml 2ml 3ml 4ml 5ml 6ml 7ml



BH-1
Extension Tube with
Injection Set Adapters



CD-038
Disposable Syringe
1ml 2ml 3ml 5ml 10ml 20ml 30ml 50ml



MS-IS-2
Syringe with Needle 31G
0.3mL 0.5mL 1mL



JXYK-002
Bottle Infusion Set



JXYK-001
Disposable Infusion Needle
0.6~0.8MM(23G-21G)



FN-04
Detained Needle
Needle
8 G、20 G、22 G、24 G



JXYK-003
Disposable Infusion Set



FN-01
Pediatrics Disposable
Infusion Set



14-26G
Penholder Type Indwelling
Needle
8 G、20 G、22 G、24 G



AG-HC004
Paper Frame IV Dressing



AG-GS01
Sterile Gauze Swab

OR ROOM CONSUMABLES



ST-4

Vinyl Gloves



ST-2

Nitrile Gloves



BCRP01F2

Latex Exam Gloves



ST-1

Latex Surgical Gloves



BH-CVC

Central Venous Catheter



BH-HC

Hemodialysis Catheter Kit



BH-BL01

A-V Blood Line



ZJSD-2

Endotracheal Tube



ZJSD-1

Endotracheal Tube



A60

Hemodialyser



MDW-124

Medical Protective Clothing(Non-Sterile)



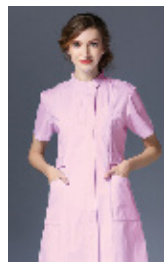
KJ-S001

Surgical Gown



KJ-M006

Doctor Clothes



MDW-05

Medical Nurse Suit (Short Sleeve)



MC116-B

Drainage Bag



MC115-A

Enema Flushing Bag



MC106-C

Enterocoelia Type Drainage Tube



MC113-C

Mask With Nebulizer



KL1009

Protective Mask



MDW-515

Mask

OR ROOM CONSUMABLES



MDW-308
Disposable Medical Mask



MC-126A
Disposable Sterile Mouth Bag



MC127-A
Disposable Sterile Production Package



MC-128A
Disposable Sterile Dental Surgical pack



MC-128B
Disposable Sterile Laparoscope Surgical pack



MC-128C
Disposable Sterile Chest Surgical Pack



MC-128D
Disposable Joint Replacement Pack



MC-128E
Disposable Sterile Brain Surgical Pack



MC-128F
Disposable Peripheral Intervention Pack



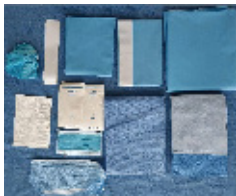
MC-128G
Disposable Sterile Cystoscope Pack



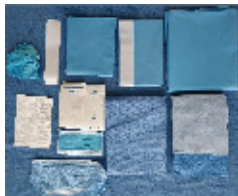
MC-128H
Disposable Sterile Single Pouch Ophthalmic Pack



MC-128I
Disposable Sterile Surgical Standard Pack



MC-128J
Disposable Sterile Orthopedic Pack(chest)



MC-128K
Disposable Sterile Orthopedic Pack(face)



MC-128L
Disposable Sterile HIP REPLACEMENT Pack



MC-128M
Disposable Sterile Implant Pack



MC-128N
Disposable Sterile TUR Pack(Urology Set)



MC-127A
Disposable Sterile Midwife Pack



MC-127B
Disposable Sterile Caesarean Section Pack



A VOTRE SERVICE DEPUIS 1995

HFS GROUP

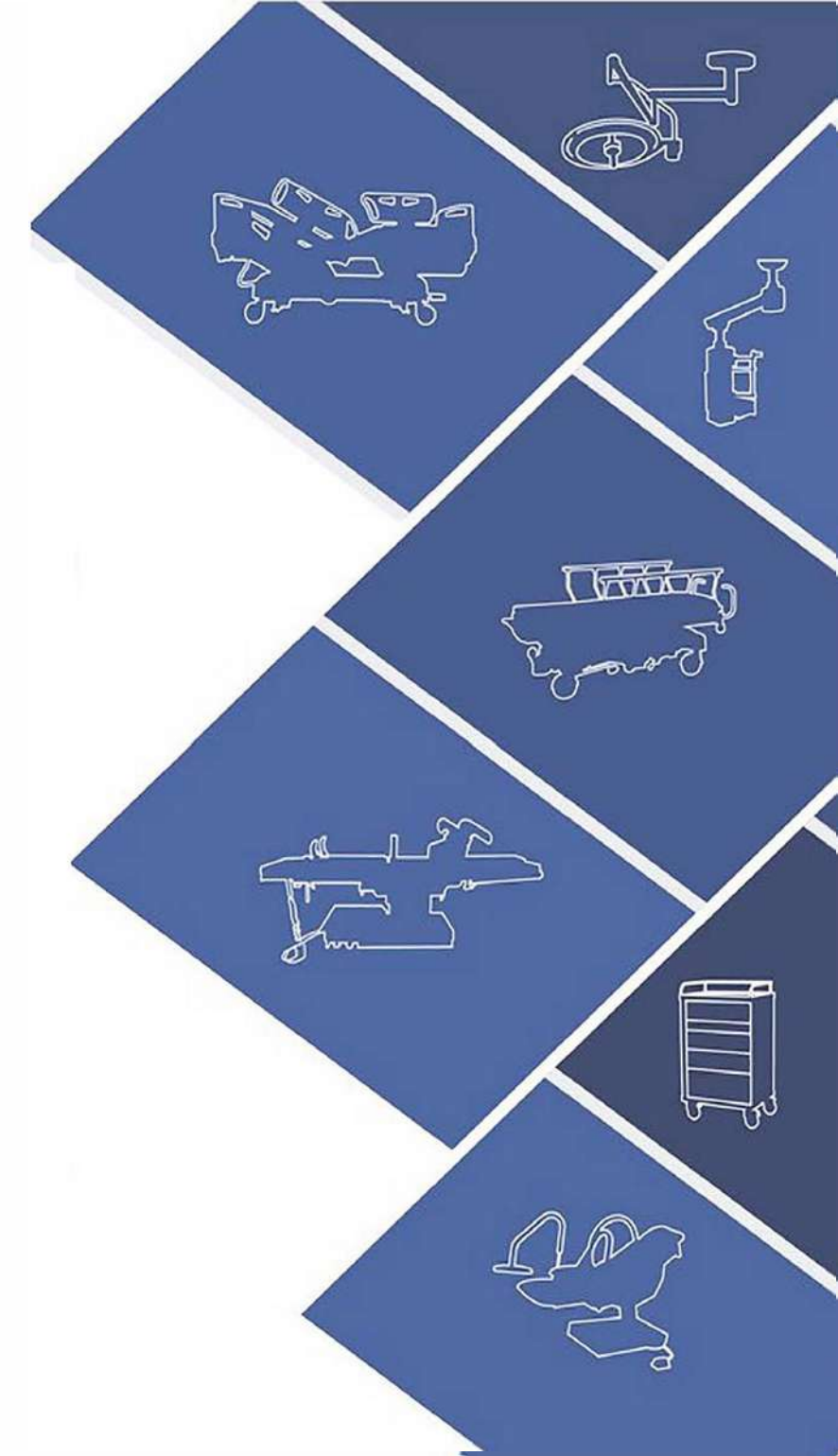
Taillepied 44, 1095 Lutry

direction@healthsport.ch

+41 21 903 57 67

healthsport.ch

Mobilier Médical SAYO



AG-BR002B

7-Functions ICU Bed

AG-BR002B ICU Bed is designed for intensive care patients with inverting function to meet multi-function requirements. With weighing system accurate to 0.01kg. Three columns control vertical lift and lateral tilt. Using Linak motors with long using life. Equipped with 10pcs bedboards, more comfortable for patients to lay on. Embedded operator design more convenient for patients and nurse to operate. HFB patent plug design, can replace all the plug and apply to any voltage.

Size: 2250*1050*450-790mm

Functions:

HI-LOW: 450-790mm
Back Section adjustable: 0-75°
Trendelenburg: 0-12°
Anti-Trendelenburg: 0-12°
Left tilt: 0-30°
Right tilt: 0-30°
Foot Section adjustable: 0-45°
CPR function

Loading capacity: 300Kg
Net Weight: 170Kg
Gross Weight: 200Kg
Package size: 2200*990*600mm



Technical Parameter

1. Treated by electro-coating and powder-coating
2. 10-part cold-rolled steel bedboards
3. 3 columns
4. 4pcs of ABS handrails
5. CPR Function
6. Battery Backup
7. 4 double-side silent wheels (150mm)
8. All screws made of stainless steel
9. Height adjustable 304 stainless steel iv pole
10. One-step molding ABS dust cover
11. Angle indicator panel
12. Embedded handrail operator, footboard equipment with nursing operator
13. Central controlled braking system
14. Drainage hook
15. Four corners with retractable iv pole support

AG-BY003C

5-Functions Electric ICU Bed

AG-BY003C is 5-Function electric hospital bed, controlled by four Linak motors. Can meet patient's comfortable position. Consist of detachable ABS headboard, 4pcs ABS handrails, ABS bedboards.

Technical Parameter

1. Overall size (L*W*H): 2200*900*400-700mm
2. Durable frame: made of cold-rolled steel plate, treated by electro-coating and powder-coating
3. Detachable ABS headboard
4. 4-part detachable ABS bedboards
5. Detachable ABS handrails
6. Quiet and robust electric actuators provide reliable operation
7. Remote handset control of all electrically operated functions and movements
8. Fully tested sturdy construction capable of taking a maximum user weight of up to 250kg
9. Double-side silent wheels, ϕ 125mm, with cross brakes
10. Motor: Imported linak motor from Denmark
11. With one ss height adjustable I.V pole, with Drainage hook
12. With Battery backup



5-Functions:

- 1) Backrest max upward angle: 75°
- 2) Footrest max upward angle: 45°
- 3) Height adjustment: 480-760mm
- 4) Trendelenburg: 12°
- 5) Anti-trendelenburg: 12°



AG-BR001

8-Function ICU Bed

AG-BR001 Intelligent bed is our new designed hospital bed to meet multi-function requirements of patients. Controlled by 6pcs of Linak motors with eight functions. The length of bed can extend 20cm. Embedded operator design more convenient for patients to operate. Easily change to chair position.

Technical Parameter

1. Treated by electro-coating and powder-coating
2. Cold-rolled steel bedboards
3. PP material handrails
4. X-ray available back board
5. 6pcs Linak motors
6. Embedded operator
7. CPR function
8. Battery backup
9. 4 double-side silent wheels(150mm)
10. All the screws made of stainless steel material
11. Height adjustable 304 stainless steel iv pole
12. One-step molding powder coated steel dust cover
13. Angle indicator panel
14. Centra l-controlled side brake
15. With anti-bumper, lighting lamp
16. Drainage hook



Size:
2000-2200 × 1020 × 525-965mm
8-Functions:
• HI-LOW:525-965mm
• Back Section adjustable:0-75°
• Knee section adjustable:0- 45°
• Trendelenburg:0- 15°
• Anti-Trendelenburg:0- 15°
• Length extend: 2000-2200mm
• Chair function
• Footboard curve function
• CPR function

Loading capacity:
300kg
Net weight:
160kg
Gross weight:
200kg
Package size:
2200 × 900 × 600mm



AG-BY009

5-Functions ICU Bed

AG-BY009 ICU bed is designed for intensive care patients with weighing function accurate to 0.01kg. Equipped with 10pcs bedboards, more comfortable for patients to lay on. Embedded operator design more convenient for patients and nurse to operate. HFS patent plug design, can replace all the plug and apply to any voltage. Vertical lift noiseless, extend the life of motor.

Technical Parameter

1. Treated by electro-coating and powder-coating
2. 10-part cold-rolled steel bedboards
3. Linak motor
4. Alarm system for patient left
5. Detachable ABS head/footboard board. 4pcs ABS handrails
6. Weighing function accurate to 0.01KG
7. CPR function
8. Battery backup
9. 4 double-side silent wheels(150mm)
10. All the screws made of stainless steel material
11. Height adjustable 304 stainless steel iv pole
12. One-step molding ABS dust cover
13. Angle indicator panel
14. Embedded handrail operator, footboard equipment with nursing operator
15. Central controlled braking system
16. Retractable iv pole
17. Drainage hook

Size:
2250 × 1050 × 450-790mm
5-Functions:
HI-LOW: 450-790mm
Back Section adjustable:0-75°
Trendelenburg:0- 12°
Anti-Trendelenburg:0- 12°
Knee section adjustable:0- 45°
Weighing memory function.CPR function

Loading capacity:
300kg
Net weight:
160kg
Gross weight:
200kg
Package size:
2200 × 900 × 600mm



AG-BY003B

5-Function ICU Bed

AG-BY003B is an 5-Function electric hospital bed, controlled by four L&K motors. Meet patients every comfortable position design. Consist of detachable ABS head/foot board, 4pcs ABS handrails, 4pcs ABS bedboards. More durable, easy to clean and operate.

Size: 2200 × 1060 × 440-760mm	Loading capacity: 250kg
5-Functions: Backrest max upward angle: 75° Footrest max upward angle: 40° Height adjustment: 440-760mm Trendelenburg: 12° Anti-trendelenburg: 12°	Net weight: 159kg Gross weight: 200kg Package size: 2145 × 980 × 535mm



Technical Parameter

1. Durable frame: made of cold-rolled steel plate, treated by electro-coating and powder-coating
2. Detachable ABS headboard/footboard
3. 4-part ABS bedboards
4. 4pcs of ABS handrails
5. Quiet and robust electric actuators provide reliable operation
6. Remote handset control of all electrically operated functions and movements
7. Motor: L&K motor from Taiwan
8. Four silent dual wheels with Central-controlled braking system, ϕ 125mm,
9. With one ss height adjustable I.V pole, with Drainage hook

AG-BY005

Five Function Electric Bed

AG-BY005 is an 5-Function electric hospital bed, controlled by four L&K motors. Meet patient's every comfortable position design. Consist of detachable ABS head/foot board, 4pcs ABS handrails, 4-part steel bedboards. Durable and easy to operate.

Size: 2200 × 900 × 400-700mm	Loading capacity: 250kg
5-Functions: • Backrest max upward angle: 75° • Footrest max upward angle: 40° • Height adjustment: 400-700mm • Trendelenburg: 12° • Anti-trendelenburg: 12°	Net weight: 150kg Gross weight: 170kg Package size: 2250 × 1100 × 550mm



Technical Parameter

1. Durable frame: made of cold-rolled steel plate, treated by electro-coating and powder-coating
2. Detachable ABS headboard/footboard
3. 4-part steel bedboards
4. Detachable ABS handrails
5. Quiet and robust electric actuators provide reliable operation
6. Remote handset control of all electrically operated functions and movements
7. Central-controlled side braking system
8. Four silent wheels, ϕ 125mm,
9. Motor: L&K motor from Taiwan
10. With one ss height adjustable I.V pole, with drainage hook





AG-W001

Ultra-low electric healthcare bed

Function:

Height adjustment: 250-650mm

Back section: 0-75°

Foot section: 0-35°

Trendelenburg: 0-13°

Anti-Trendelenburg: 0-13°

Optional accessories:

1. Lifting pole
2. Optional mattress: 5mm coir mattress + inflatable mattress
3. Nurse operator (with electric CPR function)
4. Matching cabinet and over bed table
5. 4-inch central control braking castors or adjustable foot pad
6. Backboard plate with X-ray permeable
7. Segment guardrail in the middle or integrated six bars guardrail

Technical Parameter

1. Ultra-low design, Dimensions: 2200 x 1100 x 250-650mm
2. One set of Linak control system with 4 Linak Motors, Linak hand control and Linak spare battery
3. Night sight hand control and nightlight
4. Cardio-pulmonary Resuscitation (CPR) function
5. Seat design on back and foot section
6. Segmented Aluminum guardrail
7. Carried Japanese steel standard for bed frame
8. Wooden headboard and footboard
9. Wooden bed frame around
10. Four pieces electrostatic spraying mesh bed board
11. Custom-made steel bolt pin
12. 8 pcs "secure" double silent 125mm diameter castors
13. The height-adjustable stainless steel infusion stand
14. The four corners are equipped with IV pole hole, lifting pole hole and orthopedic frame hole



AG-W002

Electric healthcare bed

Technical Parameter

1. One set of Linak control system with 3 Linak Motors, Linak hand control and Linak spare battery
2. Night sight hand control and nightlight
3. Seat design on back and foot section
4. Segmented Aluminum guardrail
5. Carried Japanese steel standard for bed frame
6. Wooden headboard and footboard
7. Wooden bed frame
8. Four pieces electrostatic spraying mesh bed board
9. Custom-made steel bolt pin
10. Four "secure" double side 125mm silent castors
11. The height-adjustable stainless steel infusion stand
12. The four corners are equipped with infusion stand hole, lifting pole hole and orthopedic frame hole



AG-WS001

Manual healthcare bed

Technical Parameter

1. Four crank Aluminum guardrail
2. International standard steel bed frame
3. Wooden headboard and footboard
4. Wooden bed frame
5. Four pieces electrostatic spraying mesh bed board
6. Anti-backward, anti-loose steel crank
7. Custom-made steel bolt pin
8. Four pieces "Secure" double silent diameter 125mm castors
9. The height-adjustable stainless steel infusion stand
10. The four corners are equipped with IV pole hole, lifting pole hole and orthopedic frame hole





AG-BY101

3-Function Electric Bed

Technical Parameter

1. Treated by electro-coating and powder-coating
2. 4-part Steel bedboards with abs soft joint
3. L&K motor from Taiwan
4. Handrail: 4PCS ABS, detachable ABS head/foot board
5. Fully tested sturdy construction capable of weight up to 250kg
6. 4 double-side silent wheels (125mm)
7. All the screws made of stainless steel material
8. Height adjustable 304 stainless steel iv pole
9. Quiet and robust electric actuators provide reliable operation
10. Foot step central braking system
11. Retractable iv pole support
12. Drainage hook

Size:
2160 x 1050 x 450-700mm

Functions:

- HI-LOW: 450-700mm
- Back section adjustable: 0-75°
- Knee section adjustable: 0-40°



AG-BM119

3-Function Electric Chair Bed



Technical Parameter

1. Durable frame: made of cold-rolled steel plate, treated by electro-coating and powder-coating
2. ABS headboard/footboard, with plastic patient name card
3. 4-part steel mesh material bedboards
4. One big piece of ABS handrail on each side
5. Quiet and robust electric actuators provide reliable operation
6. Remote handset control of all electrically operated functions and movements
7. Four silent wheels with brakes, ϕ 125mm
8. Motor: L&K motor from Taiwan
9. With one ss height adjustable I.V pole, with drainage hook

Size:
2000 x 945 x (505-750) mm

3-Functions:

- Backrest max upward angle: 75°
- Footrest max upward angle: 40°
- Height adjustment: 505-750mm

AG-BMY001

3-Function Hydraulic Bed

3-Function Hydraulic Bed designed for the customers required hydraulic control beds. With the same functions of normal electric/manual bed.

Size:

2130 × 970 × (475–780) mm

3-function:

- Backrest max upward angle: 75°
- Footrest max upward angle: 40°
- Height adjustment: 475–780mm

Technical Parameter

1. Durable frame: made of cold-rolled steel plate, treated by electro-coating and powder-coating
2. ABS headboard/footboard, with plastic patient name card
3. 4-part cold-rolled steel bedboards
4. 6-rank al-alloy handrails
5. Hi-LOW controlled by hydraulic pedal, back section and knee section controlled by manual
6. Four silent wheels with brakes, ϕ 125mm
7. With one ss height adjustable I.V pole, with drainage hook



Loading capacity:
250kg

Net weight:
150kg



Gross weight:
170kg

Package size:
1850 × 1000 × 600mm



AG-BMS001C

5-Function Manual Bed

Technical Parameter

1. treated by electro-coating and powder-coating
2. 4-part cold-rolled steel bedboards with ABS soft joint
3. Detachable ABS head/footboard, 4pcs ABS handrails
4. 4 double-side silent wheels(125mm)
5. All the screws made of stainless steel material
6. Height adjustable 304 stainless steel iv pole
7. Foot step central braking system
8. Retractable iv pole support
9. Drainage hook



Size:

2160 × 1050 × (500–750)mm

5-Functions:

- HI-LOW: 500–750mm
- Back Section adjustable: 0–75°
- Trendelenburg: 0–12°
- Anti-Trendelenburg: 0–12°
- Knee section adjustable: 0–40°



AG-BMS001

5-Function Manual Bed

Functions:

HI-LOW: 500-750mm

Back Section adjustable: 0-75°

Trendelenburg: 0-12°

Anti-Trendelenburg: 0-12°

Knee section adjustable: 0-40°

Technical Parameter

1. Treated by electro-coating and powder-coating
2. 4-part steel bedboards
3. Detachable ABS headboard/footboard, with plastic patient name card
4. 6-crank Al-alloy handrails
5. Four silent wheels with central-controlled braking system, ϕ 125mm
6. Height adjustable 304 stainless steel iv pole
7. All the screws made of stainless steel material
8. Drainage hook



AG-CB013

5-Function Manual Hospital Bed

Technical Parameter

1. Durable frame: made of cold-rolled steel plate, treated by electro-coating and powder-coating
2. Detachable ABS headboard/footboard, with plastic patient name card
3. 4-part Steel bedboards
4. stainless steel rails
5. Fully tested sturdy construction capable of taking a maximum user weight of up to 250kg
6. Central-controlled braking system, ϕ 125mm wheels
7. With one ss height adjustable I.V pole, with Drainage hook

Size:

1980 x 920 x (520-740) mm

Functions:

- Backrest max upward angle: 75°
- Footrest max upward angle: 40°
- Height adjustment: 520-740mm
- Trendelenburg: 12°
- Anti-trendelenburg: 12°



AG-BYS001

3-Function Manual Bed

Size:

2160 x 1050 x 500-750mm

Functions:

HI-LOW: 500-750mm

Back section adjustable: 0-75°

Knee section adjustable: 0-40°



Technical Parameter

1. Treated by electro-coating and powder-coating
2. 4 PCS Steel bedboards with abs soft joint
3. 4 PCS detachable ABS handrails
4. 3 detachable ABS cranks
5. Four silent wheels with cross brakes, ϕ 125mm
6. Height adjustable 304 stainless steel iv pole
7. All the screws made of stainless steel material
8. Drainage hook



AG-BMS101A

2-Function Manual Bed

Technical Parameter

1. Treated by electro-coating and powder-coating
2. 4-part steel bedboards
3. Detachable ABS headboard/footboard, with plastic patient name card
4. 6-crank Al-alloy handrails
5. Four silent wheels with cross brakes, ϕ 125mm
6. Height adjustable 304 stainless steel iv pole
7. All the screws made of stainless steel material
8. Drainage hook

Size:

2130 x 970 x 540mm

Functions:

- Back section adjustable: 0-75°
- Knee section adjustable: 0-40°



AG-BYS106

2-Function Manual Bed

Technical Parameter

1. Treated by electro-coating and powder-coating
2. 4-part cold-rolled steel bedboards
3. ABS head/foot board and 4pcs ABS handrails
4. 4 silent wheels(125mm)
5. All the screws made of stainless steel material
6. Height adjustable 304 stainless steel iv pole
7. Foot step central braking system
8. Retractable iv pole support
9. Drainage hook

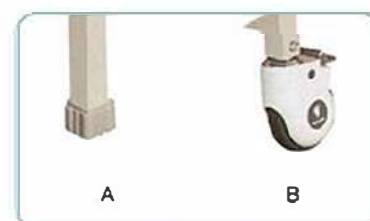
Size:

2120 × 1050 × 540mm

Functions:

Back Section adjustable:0-75°

Knee section adjustable:0-40°



AG-BYS203

Single Function Manual Bed (Type I)

Size:

2130 × 960 × 540mm

Functions:

Back Section adjustable:0-75°



Technical Parameter

1. Treated by electro-coating and powder-coating
2. 4-part cold-rolled steel bedboards
3. Handrail: 6-crank al-alloy, detachable ABS head/foot board
4. 4 silent wheels(125mm)
5. All the screws made of stainless steel material
6. Height adjustable 304 stainless steel iv pole
7. Foot step cross braking system
8. Retractable iv pole support
9. Drainage hook

AG-BYS204

Single Function Manual Bed (Type II)

Size:

2130 × 960 × 540mm

Functions:

Back Section adjustable:0-75°



Technical Parameter

1. Treated by electro-coating and powder-coating
2. 4-part cold-rolled steel bedboards
3. With detachable ABS head/foot board
4. 4 silent wheels(125mm)
5. All the screws made of stainless steel material
6. Height adjustable 304 stainless steel iv pole
7. Foot step cross braking system
8. Retractable iv pole support
9. Drainage hook

AG-BMS303

Flat Bed

Size:

2130 × 960 × 540mm



Technical Parameter

1. Treated by electro-coating and powder-coating
2. 4-part cold-rolled steel bedboards
3. With detachable ABS head/foot board
4. With four legs
5. All the screws made of stainless steel material
6. Height adjustable 304 stainless steel iv pole
7. Retractable iv pole support
8. Drainage hook



AG-CB001

1-Crank Manual Child bed

Technical Parameter

1. Overall size : 1800 x 820 x 500mm
2. Durable frame: made of cold-rolled steel plate, treated by electro-coating and powder-coating
3. Detachable al-alloy frame headboard /footboard with plastic board
4. 2-part Steel bedboards
5. 5-crank Al-alloy handrails
6. Fully tested sturdy construction capable of taking a maximum user weight of up to 200kg
7. With one ss height adjustable I.V pole, with Drainage hook

1-function:

- Backrest max upward angle: 75°



AG-CB014

2-Function Child Bed

Technical Parameter

1. Size: 800*700*1600mm
2. 304 Stainless steel bed frame
3. Footboard with plastic patient name card
4. 4-part cold-rolled steel bedboards
5. Detachable 304 stainless steel handrails
6. Max weight 250Kg
7. Castors with cross braking system
8. Stainless steel retractable IV pole
9. Drainage hook



AG-CB003

Flat Child Bed

Technical Parameter

1. Overall size : 1810 x 900 x 590mm
2. Durable frame: made of cold-rolled steel plate, treated by electro-coating and powder-coating
3. Detachable steel frame headboard/footboard with plastic board
4. Steel bedboards
5. Full length steel handrails
6. Fully tested sturdy construction capable of taking maximum user weight of up to 200kg
7. With one ss height adjustable I.V pole, with Drainage hook
8. Four wheels with cross brakes



AG-CB012

2-Function Child Bed

Technical Parameter

1. Overall size : 1930 x 840 x 450mm
2. Durable frame: made of cold-rolled steel plate, treated by electro-coating and powder-coating
3. Detachable ABS headboard/footboard, with plastic patient name card
4. 4-part Steel bedboards
5. al-alloy rails
6. Fully tested sturdy construction capable of taking a maximum user weight of up to 250kg
7. Central-controlled braking system, 125mm wheels
8. With one ss height adjustable I.V pole, with Drainage hook



AG-CB010

Baby Crib(Type II)

Size:

810 × 520 × 880mm

Technical Parameter

- 1. Steel bed frame with basket
- 2. Steel side rails around
- 3. ABS tray with mattress
- 4. 4 castors with brakes
- 5. Tilting angle of head from 0 to 12 °
- 6. Maximum loading capacity: 60kgs



AG-CB011

Baby crib

Size:

850 × 500 × 780–980mm

Technical Parameter

- 1. Steel frame
- 2. ABS baby basin
- 3. ABS tray and base
- 4. 4 castors with cross brakes
- 5. Tilting angle of head from 0 to 12 °
- 6. Height of bed adjustable from 810mm to 930mm
- 7. Maximum loading capacity: 60kgs

AG-HS001

Luxious Patient Stretcher

Size:

2120 × 850 × 600–950mm

Material:

- Pump: American Pump
- Steel frame, aluminum alloy handrails
- X-ray available back board
- Imported PP material bottom platform
- With I.V. pole

Functions:

- Backrest max upward angle: 75°
- Footrest Max upward Angle: 40°
- Height max adjustment: 600–950mm
- Trendelenburg: 15°
- Anti-trendelenburg: 15°

Loading capacity:

250kg

Static loading:

400kg

Net weight:

132kg

Gross weight:

175kg

Package size:

2130 × 810 × 700mm



Technical Parameter

1. Made of cold-rolled steel plate, treated by electro-coating and powder-coating
2. Two American Pumps, stable and durable
3. Foot rest controlled by hydraulic, easy operating
4. 304 stainless steel IV pole
5. With PU waterproof mattress (50mm)
6. Four central-controlled silent dustproof wheels (200mm)
7. American bakelite plate
8. One-step molding PP dust cover
9. Patent for curve 304 stainless steel implantable handrails
10. Adjustable guide wheel
11. CPR function
12. Backboard with X-ray
13. Centrally controlled brake
14. Detachable IV Pole Support
15. Bumper castors
16. Adjustable push handles
17. Drainage hook



AG-HS021

Exchange Stretcher Trolley For Operation Room

Technical Parameter

1. Made of cold-rolled steel plate, treated by electro-coating and powder-coating
2. American hydraulic system
3. Exclusive use transfer mattress (20mm thickness, 4 handles, high strength nylon material)
4. 304 stainless steel IV pole
5. One-step molding PP bedboard
6. 8 silent castors (124mm/150mm)
7. Two body belts
8. Central controlled side-braking system
9. Detachable ABS handrails
10. Retractable IV pole hole
11. Adjustable oxygen holder

Size:
1900 × 640 × 730–940mm

- Functions:
- Back section adjustable: 0–90°
 - Height adjustable
 - 8 wheels exchange for OT Room

Loading capacity:
250kg

Static loading:
400kg

Net weight:
130kg

Gross weight:
140kg
Package size:
2100 × 720 × 650mm



AG-HS003

Conneting Stretcher Trolley For Operation Room

Size:
3650 × 640 × 640–970mm

- Functions:
- HI-LOW: 640–970MM
 - Back section: 0–75°



Technical Parameter

1. Each trolley structure and railway are made of aluminum alloy, durable
2. Two ABS side rails
3. ABS bedboard
4. Back section pneumatic spring
5. Exclusive use transfer mattress (15mm thickness, high strength PP material)
6. Two body belts
7. Eight luxurious double side castor (150 mm)
8. Each trolley has one direction castor
9. Central locking system
10. Two trolleys join together, lift and down separately
11. Stretchers can be moved smoothly when they are at the same level
12. Maximum loading capacity: 150kgs
13. 304 stainless steel iv-pole



AG-HS002

Manual Transfer Stretcher

Size:
1930 × 640 × 540–840mm

- Material:**
- Trolley structure is made of aluminum alloy
 - Two ABS side rails, collapsible
 - I.V. pole, castors, mattress, pneumatic spring
 - Maximum loading capacity: 150kgs

- function:**
- Height is adjustable from 540mm to 840mm(Operated manually)
 - Locking function with central locking system
 - Stretcher can be locked automatically with the trolley
 - Back section is controlled by spring



AG-HS007

Electric Stretcher

Size:
2120*800*930/630mm

- Material:**
- Two Link motor,electric control
 - Panel,Rise-and-Fall Guide Wheel,Aluminum alloy Side rail,Bed base may X-ray(Electric panel made in America),CPR

- 4-function:**
- Backrest max upward angle: 75°
 - Height adjustment: 630–930mm
 - Trendelenburg: 12°
 - Anti-trendelenburg: 12°



AG-HS008

Hydraulic Stretcher

Size:
1930 × 700 × 630/930mm

- Material:**
- Pump: American Pump
 - PP handrails
 - Bottom platform is imported PP material
 - With I.V. pole

- 4-function:**
- Backrest max upward angle: 75° (Controlled manually)
 - Height adjustment: 630–930mm (Controlled by hydraulic pump)
 - Trendelenburg: 12° (Controlled by hydraulic pump)
 - Anti-trendelenburg: 12° (Controlled by hydraulic pump)

AG-OT005

Electric Operation Table



Accessories:

Shoulder fixer

Waist fixer

Foot stopper

Leg supporter

Anesthesia screen frame

Specification:

Table Length: 2000mm*50mm

Table Width: 480mm*20mm

Height range of the platform: (750-1000)*50mm

Forward: $\geq 25^\circ$

Backward: $\geq 35^\circ$

Left, right tilt: $\geq 15^\circ$

Head board upward: $\geq 40^\circ$

Head board downward: $\geq 90^\circ$

Waist board lifting: ≥ 100 mm

Leg board fold downward: $\geq 90^\circ$

Leg board fold outspread: $\geq 90^\circ$

Back board fold upward: $\geq 45^\circ$

Back board fold downward: $\geq 20^\circ$

AG-40H-1

Single Arm Electric Abdominal Cavity Pendant



Specification:

1. Working platform vertical lift range: 600mm

2. Horizontal rotation angle $\leq 340^\circ$.with gas braking system

3. Loading capacity: 200KGS

4. Standard accessory for the gas connecting: Oxygen(2pcs),
VAC(2pcs), Air(1pc), CO (1pc)

5. Electrical outlet: 8 pcs(220V 10A)

6. With equipotential ground terminal(2pcs), Internet connector
RJ45(1pc)

8. Surface treatment using high-pressure electrostatic powder
coating

9. Adjustable stainless steel iv pole and syringe pump support
1set



AG-LT002

Operating Lamp

AG-LT002 series is fully enclosed
streamlined dual-lamp body structure.
Fully meeting the high standards of
disinfection and laminar flow in today's
operating room.



Diameter of lightthead(cm)	78/78
Illumination at 1m(lux)	80000-160000
Light field diameter at 1m (cm)	10-28
Diameter of spot D50(mm)	180 \pm 15 100 \pm 15
L1+L2 Depth of illumination(cm)	130
Color rendering index(Ra)	95 Red color index (R9) 93
Optional color temperature(K)	3500.4000.4500
Average bulb life (hours)	50,000
Working distance(cm)	75-150

AG-OT007

Electric-Hydraulic Operating Table

Main Usage:

Electric-Hydraulic can be operated for eye, gynecology or orthopedics clinical all kinds of surgery.

Structure :

Operating table consists of two parts: mechanical and electro-hydraulic control system. Depending on manual operation, the product can meet the requirement of posture in clinical operation.

Dimension of table top:

Overall Length	2050mm
Width	500mm

Dimension of section:

Head Section	250 × 500mm
Back Section	465 × 500mm
Waist Section	75 × 500mm
Seat section	550 × 500mm
Leg Section	600 × 240mm

Table top from floor:

Min Height	580mm
Max Height	930mm
Adjustment	350mm

Range of movements:

Reversed Trendelenburg	± 20°
Trendelenburg	± 15°
Lateral Tilt	± 15°



Adjustment of sections :

Head Section Raised from the horizontal	± 45°
Head Section lowered from the horizontal	± 90°
Back Section Raised from the horizontal	± 75°
Back Section Raised from the horizontal	± 30°
Leg Section Lowered from the horizontal	± 90°
Leg section opened	± 90°
Kidney Bridge Elevated(Optional)	± 80mm
More forward and backward	350mm(can be adjusted according your requirement) - 530mm

Bed Pan rotation:	0 ~ 180°
Restoring horizontal position(optional):	± 2°
Lifting speed:	4 ~ 16mm/s
Safe working load:	250kg
Rotation:	360 degree
X-ray:	Yes
Device safety sort I	B
IPX4 Ingress Protection:	IPX4
Power:	(AC)220V, 50Hz
Internal power:	supply(DC)24V
Battery capacity	≥ 2.4AH





AG-OT009

Electric Operating Table

Specifications:

Dimension of table top:

Overall Length: 2100mm

Width: 500mm

Dimension of section:

Head Section: 250 x 500mm

Back Section: 545 x 500mm

Seat section: 450 x 500mm

Leg Section: 600 x 240mm

Kidney Bridge: 75 x 500mm

Foot Section: 180 x 273mm

Table top from floor

Min Height: 750mm

Max Height: 1000mm

Adjust: 250mm

Range of movements:

Reversed Trendelenburg $\geq 20^\circ$

Trendelenburg $\geq 15^\circ$

Lateral Tilt $\geq 15^\circ$

Backward and Forward Movements ≥ 400 mm

Adjustment of sections:

Head Section Raised from the horizontal $\geq 45^\circ$

Head Section lowered from the horizontal $\geq 90^\circ$

Back Section Raised from the horizontal $\geq 45^\circ$

Kidney Bridge Elevated ≥ 80 mm

Leg Section Lowered from the horizontal $\geq 90^\circ$

Leg section opened $\geq 90^\circ$

Lifting speed $4 \sim 16$ mm/s

AG-OT015

Manual Hydranlic Operating Table

Specifications:

Dimensions of Table Top:

Overall length : 2100mm

Width : 500mm

Dimensions of Sections

Head Rest: 250 x 500mm

Back section : 465 x 500mm

Kidney Bridge : 75 x 500mm

Seat Section: 450 x 500mm

Leg Section : 600 x 240mm

Foot Rest : 273 x 180mm

Table Top from Floor

Min. Height : 750mm

Adjust ≥ 200 mm

Range of Movements

Max. Reversed Trendelenburg $\geq 15^\circ$

Max. Trendelenburg $\geq 20^\circ$

Max. Lateral Tilt $\geq 15^\circ$

Adjustments of Sections:

Head Rest-raised from the horizontal $\geq 45^\circ$

Head Rest-lowered from the horizontal $\geq 90^\circ$

Back Section-raised from the horizontal $\geq 45^\circ$

Leg Section-lowered from the horizontal $\geq 90^\circ$

Leg Section-opened $\geq 90^\circ$

Backward and Forward movements ≥ 400 mm

Kidney Bridge Elevation ≥ 100 mm

Foot Rest-can be kept horizontally or perpendicularly to the

Leg Section.





AG-OT012

Electric Operating Table

Specifications:

Dimension of table top:

- Overall Length 2100mm
- Width 480mm

Dimension of section:

- Head Section 280 x 325mm
- Back Section 500 x 480mm
- Seat section 530 x 480mm
- Leg Section 510 x 236mm
- Foot Section 180 x 273mm
- Kidney Bridge 100 x 480mm

Table top from floor:

- Max Height 1000mm
- Min Height 750mm

Range of movements:

- Reversed Trendelenburg $\geq 20^\circ$
- Trendelenburg $\geq 15^\circ$
- Lateral tilt $\geq 15^\circ$

Adjustment of sections:

- Head Section Raised from the horizontal $\geq 45^\circ$
- Head Section lowered from the horizontal $\geq 90^\circ$
- Leg Section Lowered from the horizontal $\geq 90^\circ$
- Leg Section opened $\geq 90^\circ$
- Back Section Raised from the horizontal $\geq 45^\circ$
- Back Section lowered from the horizontal $\geq 15^\circ$
- Kidney Bridge Elevated ≥ 100 mm



AG-OT025

Hydraulic Operating Table

- Length: 2050 \pm 50mm
- Width: 480 \pm 20mm
- Maximum and minimum height of the platform: (750~950) \pm 50mm
- Back board fold upward: $\geq 80^\circ$
- Back board fold downward: $\geq 10^\circ$
- Forward: $\geq 25^\circ$
- Backward: $\geq 25^\circ$
- Leftward and Rightward: $\geq 20^\circ$
- Head board fold upward: $\geq 45^\circ$
- Head board fold downward: $\geq 90^\circ$
- Leg board fold downward: $\geq 90^\circ$
- Leg of the board split: $\geq 180^\circ$ (dischargeable)
- Waist board lifting: ≥ 120 mm

Accessories:

- A pair of shoulder support frame,
- a pair of waist support frame,
- a pair of arm resting frame,
- a pair of leg support frame,
- a screen frame,
- a pair of pedal foot board.



AG-LT002

Operating Lamp

Diameter of lighthouse(cm)	78/78
Illumination at 1m(lux)	80000-160000
Light field diameter at 1m (cm)	10-28
Diameter of spot D50(mm)	180 \pm 15 100 \pm 15
L1+L2 Depth of illumination(cm)	130
Color rendering index(Ra)	95 Red color index (R9) 93
Optional color temperature(K)	3500,4000,4500
Number of LED bulbs	111/111
Average bulb life (hours)	50,000
Heat-to-light ratio(mW/m ² lx)	3.3
Working distance(cm)	70-150
Power supply	100-240 V,50/60HZ
Max. power consumption(W)	300VA



AG-LT004-DOUBLE

Operating Lamp

- Diameter of lighthouse(cm) 78/78
- Illumination at 1m(lux) 80000~160000/80000~160000
- Light field diameter at 1m (cm) 10-28
- Diameter of spot D50(mm) 180 ± 15 100 ± 15
- L1+L2 Depth of illumination(cm) 130
- Color rendering index(Ra) 95
- Color temperature 4500 ± 500
- Average bulb life (hours) 50,000
- Heat-to-light ratio(mW/m²lx) 3.3
- Working distance(cm) 70-150
- Power supply 100-240 V,50/60HZ
- Max. power consumption(W) 300VA
- Ceiling height for installation(cm) 270-320

AG-LT005

Operating Lamp

- Illumination LX 160000 ≥ EC ≥ 80000 160000 ≥ EC ≥ 80000
- Color temperature 3000 ≤ Tc ≤ 6700
- Color rendering index 100 ≥ Ra ≥ 85
- Diameter of spot d10175 ± 35mm d10175 ± 35mm
- Depth of light beam ≥ 700
- Brightness level adjustment CPU light-dimmer
- The value of the total irradiance < 6mW/m²lx
- Total irradiance ≤ 600W/m²



AG-LT010

Operating Lamp

Adopts light sources from different positions for focus to eliminate shadow from different parts of medical workers. Vertical mobile setup with braking device is not limited by the space of surgical room and is safe and reliable in use.

- Illumination LX 160000 ≥ EC ≥ 50000
- Color Temperature 4000 ± 500
- Color Rendering Index 100 ≥ Ra ≥ 85
- Depth of light beam ≥ 500
- The value of the total irradiance (service range for temperature rise ≤ 10 degree) < 6mW/m² lx

- Total irradiance(Temperature rise on the head of patient under surgical operation ≤ 2 degree): ≤ 600W/m²
- Power 110V
- Rated Voltage of Bulb AC24V
- Rated Power of Bulb 125W
- Input power 150VA



AG-360S

Single Arm Electric Hospital Pendant

1. Working power :custom-made according to user's local power standard
2. Working platform vertical lift range: 600mm, Motor power ≤ 1 KW
3. Horizontal arm moving range(radius): less than 1000mm (can be adjustable according the hospital's requirements)
4. Horizontal rotation angle $\leq 340^\circ$,the cross arm and terminal box can rotate at the same time
5. Configuration of pneumatic brakes Anti-drift when do the operation ,it can move easily when loosen
6. NW:150KG
7. The instrument platform 2 layers (height can be adjusted),circular bead Anti-collision design
8. Gas interface standard configuration :2 oxygen gas ,2 VAC ,it can be matched as per the hospital's requirement
 - a Interface colors and shapes are different ,with anti-wrong function
 - b Insert and Draw Frequency above 20000 times
 - c Using secondary seal ,with three status(connect,cut,pull),with gas maintenance
9. Plug:8pcs
10. Equipotential ground terminal 2pcs,net work port RJ45
11. High strength aluminum alloy proximate matter
12. Surface treatment using high voltage electrostatic powder coating
13. Ceiling installing ,stand and solid
14. Adjustable stainless steel iv pole and syringe pump support 1set
15. One drawer
16. The color of body is blue



AG-45

Double Arm Electric Surgical Pendant

Dry pendant(1pc):

- 1.Horizontal rotation angle $\leq 340^\circ$
- 2.With three layers instrument platform(height can be adjusted)
- 3.Standard accessory for the gas connecting: Oxygen(1pc), VAC(1pc), Air(1pc)
- 4.Electrical outlet: 6 pcs(220V 10A)
- 5.With gas braking system
- 6.With equipotential ground terminal(2pcs), one drawer
- 7.With one adjustable stainless steel IV pole and adjusted stainless steel injection pump shelf

Wet pendant(1pc):

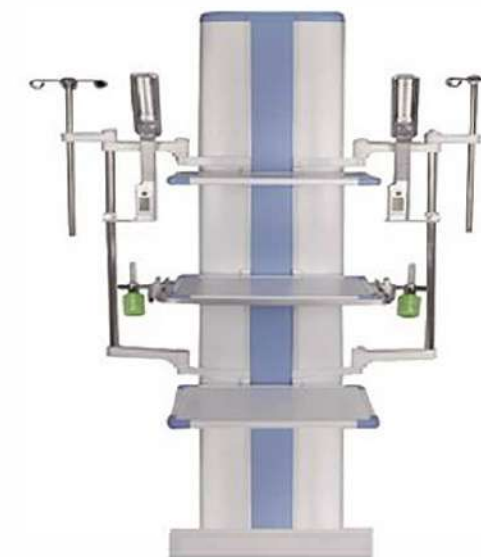
- 1.Horizontal rotation angle is 340°
- 2.With two layers instrument platform(height can be adjusted)
- 3.Standard accessory for the gas connecting: Oxygen(1pc), VAC(1pc), Air(1pc)
- 4.Electrical outlet: 8 pcs(220V 10A)
- 5.With equipotential ground terminal(2pcs)
- 6.With one adjustable stainless steel IV pole and adjustable stainless steel injection pump shelf



AG-20V-2

Floor Stand Medical Column

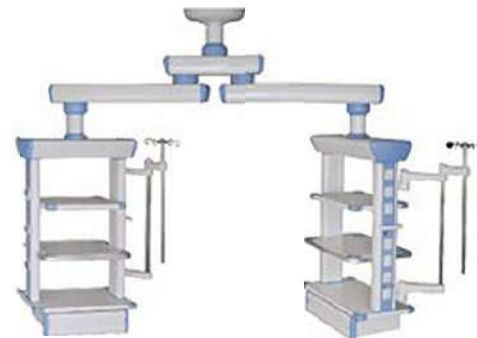
- 1 loading capacity:200KG
- 2 layers: 3pcs(height adjustable); round corner anti-collision design
- 3 Gas outlet standard: 2 Oxygen 2 vacuum 2 Air
- 4 Electric sockets:8
- 5 ground terminal: 4/ internet port:1
- 6 Adjustable stainless steel iv pole and syringe pump support 1set
- 7 1 drawer and 2 basket and 2 lighting lamp



AG-40D

Double Arm Electric Surgery Pendant

- 1.Workbench vertical range is 300 mm;Electric power ≤ 1 kw
- 2.Horizontal rotation angle $\leq 340^{\circ}$
- 3.Gas terminal standard: 2 oxygen , 2 vacuum
- 4.electric socket: 8pcs,grounding terminal:2pcs
- 5.Adjustable stainless steel iv pole and syringe pump support 1set



AG-58

Surgical Rotary Pendant

- 1.Work bench vertical lift 600MM,motor power ≤ 1 kw,Cross arm lifting,speed 22mm/s
- 2.Radius of the cross arm ≤ 1000 mm, Horizontal rotation angle $\leq 340^{\circ}$
3. Gas interlace standard configuration :2 oxygen gas ,2 VAC
- 4.Electrical outlet:8 pcs
- 5.equipotential ground terminal 2pcs,net work port RJ45
- 6.Suspension anesthesia machine
- 7.Surface treatment using high voltage electrostatic powder coating
- 8.Adjustable stainless steel iv pole and syringe pump support 1set



AG-350

Single Arm Electric Anesthesia Pendant

- 1.Dry pendant(2 pcs):
- 2.One pc rotating horizontal arm(length more than 800mm); Horizontal rotation angle $\leq 340^{\circ}$
- 3.Standard accessory for the gas connecting: Oxygen(1pc), VAC(1pc), Air(1pc)
- 4.Electrical outlet:6 pcs
- 5.With gas braking system, with one drawer, with equipotential ground terminal(2pcs)
- 6.Adjustable stainless steel iv pole and syringe pump support 1set



AG-C101A03

LDR BED(Low Starting Position)

Bed dimension including bed end and bumper wheel: Length 1930mm, width 940mm

Bed dimension: Length 1815mm, width 780mm

Min. & Max. table height: 580mm~860mm(exclude the cushion)

Back section turning: $\geq 60^\circ$

Seat section turning: $\geq 10^\circ$

Trendelenburg: $\geq 8^\circ$

Leg section up/down movement: 100mm

Footrest swing out: $\geq 45^\circ$

Footrest folding: $\geq 45^\circ$

Guard rail up/down movement: 360mm

Castor Diameter: 150mm

Standard Accessories:

Leg holder 1 pair

Waste Basin 1 piece

I.V. Stand 1 piece

Hand control 1 piece

Power cord 1 piece



AG-C101A04

LDR BED(Intelligent)

Bed dimension including bed end and bumper wheel: Length 2350mm Width 940mm

Bed dimension: Length 1950mm Width 880mm

Bed height: Lowest ≤ 500 mm Highest ≥ 890 mm (exclude the cushion)

Back section turning: $\geq 65^\circ$

Seat section turning: $\geq 12^\circ$

Trendelenburg: $\geq 8^\circ$

Leg section lifting distance: 170mm

Footrest swing out: $\geq 90^\circ$

Footrest folding: $\geq 90^\circ$

Guard rail up/down movement: 405mm

Castor dia.: 125mm

Standard accessories

Bed cushion 1 suit

I.V. Stand 1 piece

Filth basin 1 piece

Power cord 1 piece



AG-C101A02

Electric LDR Bed

Technical Parameters:
Bed dimension including bed end and bumper wheel: Length 2050mm, width 980mm
Bed dimension: Length 1815mm, width 880mm
Min. & Max. table height: 580mm~950mm(exclude the cushion)
Back section turning: $\geq 70^{\circ}$
Trendelenburg and reverse trendelenburg: reverse trend $\geq 5^{\circ}$ trend $\geq 12^{\circ}$
Leg section telescope: 550mm
Castor Diameter: 125mm

Standard Accessories:	
Leg holder	1 pair
Clamp	1 pair
Grab handle	1 pair
Foot rest	1 pair
Waste Basin	1 piece
Water proof cushion	1 set
I.V. Stand	1 piece
Cushion for newborn baby	1 piece
Cushion	1 set (including back cushion, seat cushion and assist platform cushion)
Power cord	1 piece
Foot switch (or hand control)	1 piece (optional)



AG-S104A

Gynecology Chair(Electric-Hydraulic)

Technical Parameters
Table top dimension: length 1145mm, width 500mm
Min. & Max. table height: 550mm ~ 970mm
Back section turning: down $\geq 8^{\circ}$ up $\geq 50^{\circ}$
Seat section turning: $\geq 25^{\circ}$
Arm rest swing out:0 ~ 90°
Foot rest swing out: $\geq 45^{\circ}$
Lamp adjust angle: 60°
Power: AC 220V 50HZ

Standard accessories
Arm rest 1 pair
Leg holder 1 pair
Foot rest 1 pair
Foot switch 1 piece
Shadowless lamp 1 set



AG-C201A

Electric Obstetric Table

Specifications
Dimensions of Table Top:
Overall length 1900mm
Width 600mm
Dimensions of Leg Section:
Length 650mm
Width 600mm
Table Top from floor:
Max. Height 930mm
Min. Height 680mm

Adjustments of Sections:
Back section raised from the horizontal $\geq 75^{\circ}$
Back section lowered from the horizontal $\geq 5^{\circ}$
Reversed Trendelenburg $\geq 15^{\circ}$
Trendelenburg $\geq 15^{\circ}$





AG-XD107

Electric Blood Donation Chair

Specification:

Chair Dimension: 1700mm(Curve Length) x 560mm

Height: 570mm(min.)--830mm(max)

Head section turn: -15° ~ 25°

Back section lift: -5 ~ 70°

Leg section turn: -65 ~ 5°

Foot support telescopic: 100mm

Foot support turn: 0-90°

Fixed angle of seat section: 5°

Arm Board swing out: 0 ~ 45°

Arm board height adjustment: 100mm

Arm board slide: 100mm

Arm board declining angle adjustment: -15° ~ 10°

Arm board dimension: 450 x 160mm

Trend and reverse trend: 0 ~ 12°

Arm board Concave Radian: R108



AG-XS104

Manual blood donation chair

Chair dimension: 1770mm(curve length) x 560mm

Back section lift: 30° ~ 60°

Arm board swing out: 0~45°

Arm board declining angle adjustment: 0--8°

Leg section turn: -5° ~ -90°

Center of gravity move forward at bed position: 190mm



COLOR:



AG-S105C

Electric Gynecology Chair

Dimension of the bed /surface :

Overall Length: 1250 ± 50mm

Width: 520 ± 20mm

Height:

Max Height of table top: 1200mm

Min Height of table top: 480mm

Height of seating plate: 520mm

Adjusting Scope of Tabletop:

Reversed Trendelenburg: ≥ 20°

Trendelenburg: ≥ 5°





AG-XD301

Electric Medical Chair

Technical Parameters:

- 1) With IV stand, dining table
- 2) Height can not be adjustable
- 3) Size:1900L*560W*880Hmm
- 4) Back Section:~10° ~80°
- 5) Leg Section :10° ~ 80°
- 6) Seat Segment angle: 0° ~ 30°
- 7) Trendelenburg/Reverse trendelenburg: 12°
- 8) Max weight :240kg
- 9) Two LINK Motors



AG-XD206

Electric Medical Chair

Technical Parameters:

- 1) With IV stand, dining table
- 2) Height can be adjustable
- 3) Size:1880L*920W*1350H-1640mm
- 4) Back Section:~10° ~ 80°
- 5) Leg Section :10° ~ 80°
- 6) Seat Segment angle: 0° ~ 30°
- 7) Trendelenburg/Reverse trendelenburg: 12°
- 8) Max weight :240kg
- 9) Three LINK Motors
- 10) Optional accessory:CPR, Weighing system

AG-IIR001C UP-grade

Infant Incubator

1)Specification:

- 1.Microprocessor based servo controlled temperature system
- 2.Control modes: Air mode and baby skin mode
- 3.Alarms functions : Power failure; over temperature; temperature deviation; temperature sensor failure;fan failure
- 4.>37° C temperature setting
- 5.A keypad lock prevent inadvertent changes the setting
- 6.Humidity is adjustable continuously
- 7.Heating power displayed on panel
- 8.A second thermal cut-off function for more safety
- 9.The infant bed inclination angle is adjustable
- 10.Trough for pulling and pushing ,which is convenient to add the water and wash
- 11.Fan with low noise and long life-span
- 12.Temperature deviation and over temperature could be amended in front panel directly
- 13.Silence/reset button for alarms
- 14.six operating windows,two side operating windows can be swiveled
- 15.Heater is electrically cut-out if air temperature inside incubator exceed 40° C
- 16.Cabinet with four drawers

2)Standard configuration:

Main body(including the transparent hood, control system, infant bed, water trough),
I.V.pole, mattress, cabinet, silence castors

3)Optional parts:

- 1.X ray cassette Tray
- 2.baby weight system
- 3.Electric height adjustable
- 4.LED phototherapy unit
- 5.Air and oxygen blender
- 6.Double wall hood



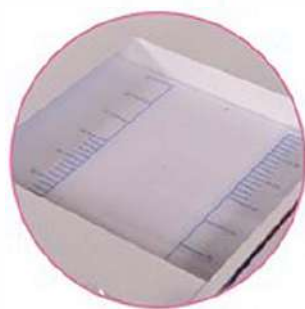
AG-IRW002B

Top Grade Infant Warmer

1. Three modes: pre-warm, manual and automatic
2. The microprocessor-controlled unit allows for three settings: Pre-warm, manual or automatic.
3. Alarm functions for safety includes: Power failure, temperature deviation, Temperature sensor failure, over temperature.
4. APGAR timer to record therapy time
5. Convenient X-ray cassette under infant mattress
6. Heater head can be adjusted +90 degree horizontally
7. Inclination of infant bed is adjustable
8. Transparent protector folded
9. Adopts anti-explosion micro crystal quartz infrared radiation tube for its radiation source, the heating is quick and life-span is long
10. Alarms are audible and visual
11. A second thermal cut-out function for more safety
12. Skin temperature sensor failure protect function avoid over temperature
13. Temperature deviation can be amended in front panel directly

2) Standard configuration

Main body (including the radiant source, control system, infant bed, bracket), X-ray cassette, I. V. Pole, skin temperature sensor, tray, mattress, transparent protector, castors.



AG-IIR001A

Infant Incubator

Function features:

1. Temperature displayed by LED
2. Alarm functions : Power failure; Over temperature; Temperature deviation;
3. Temperature sensor failure; Fan failure
4. >37°C temperature setting
5. A keypad lock prevent inadvertent changes the setting
6. A second thermal cut-out function for more safety
7. Humidity by natural airway
8. Heating power displayed on panel
9. The infant bed inclination angle is adjustable



AG-IRW003

Infant Radiant Warmer

Brief introduction:

1. Microprocessor based servo controlled temperature system
2. Three modes: pre-warm, manual or automatic
3. Set temperature and skin temperature display separately
4. Special design inclined heater head is more convenience for X rays
5. Anti-explosion micro crystal quartz for radiation source
6. Self-testing function, various failure alarms by audible and visual
7. APGAR timer to record therapy time
8. Convenient X-ray cassette tray under infant mattress
9. Inclination of infant bed is adjustable
10. LED observe light angle is adjustable
11. Adopts anti-explosion micro crystal quartz infrared radiation tube for its radiation source, the heating is quick and life-span is long
12. Alarm functions for safety includes: Power failure, Temperature deviation, Temperature sensor failure, Over temperature.



AG-XB-Y1000

Single-channel Infusion Pump

- 1.Flow Rate Range 0.1–1000ML/h
- 2.Matched Tube Type Match all types(PVC), The special tube should contact supplier
- 3.Adj. Infusion Range 999MI
- 4.Infusion Precision $\pm 3\%$ (Adj.)
5. KVO Speed 1–3ML/h
6. Beep & Led Alarms Power switch/occlusion/air in tube/door open/infusion finished/low battery/no operate/tube error installed/no medicine liquid/tube spoilage
- 7.Drop Clt Precision Drop Precision $\pm 1\%$ (Speed $\leq 360\text{ML/h}$)
8. Drop Scan Sensor IR
9. Air Scan Sensor Ultrasonic
- 10.Pressure Range 30Kpa–160Kpa (High, Middle, Low Adj.)
- 11.Beep Adj.Range High, low
- 12.Ac Power AC100V–240V $\pm 10\%$ 50Hz–60Hz
13. Insider Battery NI–MH Battery(12V): Infusion time ≈ 4 hours with battery
14. Lithium cell(12V): Time ≈ 6 –12hours with battery
15. Power consumption Less than 18VA
- 16.Security Classification Class I, BF type
17. Working Condition Temperature $\pm 5^\circ\text{C}$ – $+40^\circ\text{C}$ Humidity 20%–90%
- 18.Purge Yes
- 19.ML/h: drop/min Auto Change
20. Dimension 148*108*210mm
- 21.Weigh (kg) 2.3kg



AG-BZ007

Patient Monitor

1. 4 Standard parameters: ECG, NIBP, SpO2, RESP.
2. 7 inch high resolution color TFT LCD display.
3. Real time S–T segment analysis, pace–maker detection.
4. Indication of Incorrect manipulation and malfunction analysis.
5. Patient info input management function
6. Multi–lead ECG waveforms display in phase.
7. Large volume of tabular and graphic trends information storage and easy to recall.
8. Capture dynamic waveforms.
9. Efficient resistance to interference of defibrillator and HF knife.
10. UP to 4 hours working capacity of built–in rechargeable battery.
11. Unique accessory management cabinet.
12. Networking capacity.
13. Options IBP, ETCO2 and 2–IBP.
14. Rechargeable Lithium battery



AG-XB-Y1200

Double channel Infusion Pump

- 1.Flow Rate Range 0.1–1200ML/h
- 2.Matched Tube Type Match all types(PVC), The special tube should contact supplier
- 3.Adj. Infusion Range 999MI
- 4.Infusion Precision $\pm 3\%$ (Adj.)
5. KVO Speed 1–3ML/h
- 6.Beep & Led Alarms Power switch/occlusion/air in tube/door open/infusion finished/low battery/no operate/tube error installed/no medicine liquid/tube spoilage
- 7.Drop Clt Precision No
8. Drop Scan Sensor No
- 9.Air Scan Sensor Ultrasonic
- 10.Pressure Range 30Kpa–160Kpa (High, Middle, Low Adj.)
11. Beep Adj.Range High, low
- 12.Ac Power AC100V–240V $\pm 10\%$ 50Hz–60Hz
- 13.Insider Battery NI–MH Battery(12V): Infusion time ≈ 4 hours with battery
- 14.Lithium cell(12V): Time ≈ 6 –12hours with battery
- 15.Power consumption Less than 18VA
16. Security Classification Class I, BF type
- 17.Working Condition Temperature $\pm 5^\circ\text{C}$ – $+40^\circ\text{C}$ Humidity 20%–90%
- 18.Purge Yes
- 19.ML/h: drop/min Auto Change
- 20.Dimension 188*115*196mm
21. Weigh (kg) 3.8



AG-BZ008

Patient Monitor

- 1.12" color TFT display, up to 12 waveforms
- 2.One level menu, easy to use
- 3.Parameters including ECG/RESP, SpO2, NIBP, TEMP, Pulse Rate and IBP(optional)
- 4.Maximum 720 hour graphic and tabular trends of all parameters
- 5.Built–in recorder and battery
- 6.Suitable for adult, pediatric and neonatal patient
- 7.Arrhythmia analysis, ST calculation, Pace analysis
- 8.Anti–ESU, anti– defibrillator
- 9.Standard network interface, can connect to Central monitor system



AG-BU009

Laptop ultrasound scanner

Feature:

1. 15-inch LED screen
2. Windows embedded operating system
3. Built-in reporting workstation template (install the printer driver to print reports)
4. Built-in 8G SSD card hard disk
5. Built-in 8000 mA lithium battery (can work 3.5-4 hours)
6. Support each department inspection and measurement (routine examination: abdomen, obstetrics, gynecology, urology, small parts)
7. Reconstruction of three-dimensional features
8. Position marks: 140 kinds
9. With 44 kinds of pseudo-color display
10. Software upgrade: the software can be upgraded through U disk
11. Computer PC platform, built-in reporting workstation, micro-color, 3D reconstruction function



AG-BU005

Color Doppler Ultrasound System

Feature:

1. 15" LED Screen
2. High Definition image
3. 3D/4D imaging(option)
4. B,M,CF,PWD,PD,PDP,THI,TDI,real-time M,CWD
5. Abundant functions,Multilingual
6. Hardisk,USB storage
7. Color scanning rate:Screen degree: 85, full color vision
8. Color enhancements function:color Doppler energy,direction speed chart
9. Advanced and convenient direct network real-time image exchange,storage and display
10. Blood flow function



DARK GREEN SERIES

Designer of HFS clever use Dark Green which is 7734UP in the international standard color of PANTONE GG4004 series.

Design Theme—Give life and vigor to hospital

HFS design philosophy—'simple but not easy'

Appearance

The Dark Green series will be used in medicine trolley, treatment trolley and patient clip trolley etc. Hospital will become clean and tidy with the consistent color. What's more, health care provider, patient and their family can experience a unique feeling in such a special place. Choosing material is also quite particular. See product parameters for more information.



AG-GS001
Size: 970 × 620 × 450mm



AG-GS002
Size: 970 × 620 × 460mm



AG-GS003
Size: 970 × 620 × 460mm



AG-GS004
Size: 950 × 630 × 435mm



Health Fit & Sport Group

Taillepie 44, 1095 Lutry
www.healthsport.ch
info@healthsport.ch
 +41 21 903 57 67



AG-GS005
Size: 970 × 640 × 460mm



AG-GS006
Size: 970 × 660 × 450mm



AG-GS007
Size: 910 × 510 × 435mm



AG-GS008
Size: 950 × 645 × 470mm



AG-GS009
Size: 950 × 645 × 470mm



AG-GS010
Size: 910 × 740 × 410mm



AG-MT014A

Size:
660 × 520 × 1440mm

Technical Parameters

1. Made of high-strength ABS material
2. One-piece ABS plastic top board with arc handle and raised-edge design, covered transparent soft plastic glass
3. With four plastic-steel columns.
4. One small, two big drawers, inner with dividers can be organized easily and freely
5. Dust basket
7. Storage box
8. Disposable holder
9. Four luxurious noiseless casters, two with brakes

Package Size:
780 × 625 × 1170mm

Net Weight:
80kg



AG-WT002C

Size:
500 × 520 × 1330-1500mm

Function:

Height adjust: 900-1070mm

Technical Parameter

1. Aluminum tabletop, and ABS main chassis, battery box cover by use of one-time-molding techniques
2. Fan-shaped design can add working area
3. Height of tabletop adjustable
4. AIO Computer, low power loss, D.C. stabilized source, include network
5. Battery is 12V-18.5V, high power and safe
6. With the space for mouse, scanner, keyboard, ABS drawer
7. Fan-shaped chassis walk steadier
8. Four luxurious noiseless casters, two with brakes

Package Size:
560 × 600 × 1100mm

Net Weight:
75kg



AG-ET001A1 Emergency Trolley

Size: 850 × 520 × 950mm

Technical Parameter

1. Made of high-strength ABS material
2. One-piece ABS plastic top board with arc handle and raised-edge design, covered transparent soft plastic glass.
3. With four aluminum columns.
4. Five ABS drawers: 2 small, 2 middle & 1 big drawers, inner with dividers can be organized easily and freely, label cards for the trolley and drawers.
5. Stainless steel guard rail, sliding side shelf
6. Dust basket, Needle disposal holder, IV pole, Defibrillator shelf, Defibrillator board, Power outlet & Hooks, Oxygen tank holder, Utility container, storage box
7. Centralized lock
8. Four luxurious noiseless casters, two with brakes



AG-MT006 Medicine Trolley
Size: 750 × 480 × 920mm



AG-AT016 Anesthesia Trolley
Size: 600 × 400 × 1450mm



AG-AT001A3 Anesthesia Cart
Size: 750 × 480 × 1340mm



AG-IT006B1 Infusion Trolley
Size: 620 × 475 × 920mm



AG-MT011A1 Medicine Trolley
Size: 850 × 520 × 950mm



AG-CHT003 Patient Record Trolley
Size: 750 × 410 × 950mm



AG-ET007B4 Emergency Trolley
Size: 740 × 480 × 1000mm



AG-LPT006B Clinical Trolley
Size: 750 × 480 × 1000mm



AG-MT032 Treatment Trolley
Size: 620 × 420 × 930mm



AG-UTB09 Multi-function Cart
Size: 640 × 445 × 1010mm



AG-AC001

Accompany chair

Folded size:
620 × 720 × 940mm

Unfolded size:
620 × 1920mm

Technical Parameter

1. Chair frame is made of cold-rolled steel plate, treated by powder coating
2. Part of handrail has a quality cover
3. Three pieces of bed board with pillow
4. Chair mattress cover leather surface with sponge padded, 6cm thickness
5. Four silent casters(diameter: 55mm)
6. Mattress color is optional



AG-TC002

Transfusion-Chair

Size: 730 × 780 × 1050mm

Description:
the fabric is pressedPVC
artificial leather,not adjustable



AG-AC005

Accompany chair

Folded size:
650 × 780 × 1020mm

Unfolded size:
2060 × 650 × 450 mm

Technical Parameter

1. Chair frame is made of cold-rolled steel plate, treated by powder coating
2. Aluminum-alloy handrail
3. Three pieces of bedboard
4. Chair mattress cover PVC leather surface with sponge padded, 8cm thickness
5. Mattress color is optional



AG-AC003B

Folded size:
620 × 720 × 940mm

Unfolded size:
620 × 1950mm



AG-BC005 Bedside Locker
Size:475 × 475 × 750mm



AG-BC006C Bedside Locker
Size:480 × 480 × 870mm



AG-BC008 Bedside Locker
Size:510 × 500 × 700mm



AG-BC023 Bedside Locker
Size:500 × 500 × 780mm



AG-BC009 Bedside Locker
Size:520 × 480 × 740mm



AG-BC010 Bedside Locker
Size:460 × 440 × 780mm



AG-BC020 Bedside Locker
Size:505 × 465 × 720mm



AG-BC022 Bedside Locker
Size:500 × 500 × 780mm



AG-OBT002 Over Bed Table
Size: 900 x 400 x 750-1020mm



AG-OBT009 Over Bed Table
Size: 900 x 450 x 720-1020mm



AG-OBT015 Over Bed Table
Size: 900 x 450 x 650-1010mm



AG-OBT016 Over Bed Table
Size: 900 x 450 x 650-1150mm



AG-OBT012 Over Bed Table
Size: 780 x 400 x 800-1110mm



AG-OBT010 Over Bed Table
Size: 900 x 450 x 720-1020mm



AG-OBT014 Over Bed Table
Size: 770 x 370 x 715-1110mm



AG-NS001 Nurse Stool
Size: 380 x 480 x 700mm



AG-SS003 S.S Instrument Cupboard
Size: 900 x 400 x 1800mm



AG-SS004 Instrument Cupboard
Size: 900 x 400 x 1800mm



AG-SS007 Fan-shape Instrument Trolley
Size: 1370 x 400 x 1000mm



AG-SS008 S.S Mayo Cart
Size: 660 x 400 x 9400-1400mm



AG-SS009A Infusion Stand
Size: ϕ 450 x 450 x 1320-2350mm



AG-SS013 S.S Dirty Linen Trolley
Size: 700 x 500 x 900mm



AG-SS020 Instrument Trolley
Size: 850 x 500 x 950mm



AG-SS021 S.S Water Bottle Trolley
Size: 790 x 475 x 800mm



AG-SS026 S.S Dressing Cart
Size: 900 x 500 x 900mm



AG-SS028 S.S Emergency Trolley
Size: 650 x 405 x 920mm



AG-SS029 S.S Instrument Trolley
Size: 680 x 460 x 940-1400mm



AG-SS030 S.S Stretcher Trolley
Size: 1900 x 630 x 800mm



AG-SS031 S.S Stretcher Trolley
Size: 1950 x 650 x 800mm



AG-SS032 S.S Flat Cart
Size: 850 x 500 x 900mm



AG-SS034 S.S Dressing Cart
Size: 380 x 450 x 920mm



AG-SS042 S.S Instrument Trolley
Size: 850 x 500 x 900mm



AG-IVP001 Infusion Stand
Size: ϕ 450 x 450 x 1320-2350mm



AG-SS080 S.S Stack Instrument Trolley
Size: 1200 x 600 x 1050mm



AG-SS092 S.S Operation Washing Trolley
Size: 900 x 550 x 900mm



AG-SS066 S.S Oxygen Cylinder Cart
Size: 330 x 330 x 1200mm