



Alpha LED Surgical Lighting And
well-engineered

Rte de Taillepied 44 1095 Lutry
Tél : (021) 903 57 67
www.healthsport.ch
direction@healthsport.ch



A VOTRE SERVICE DEPUIS 1995

Smart / Sleek / Adaptable.

Ease of operation and high functionality. With its mature, well-engineered design and various options, it offers doctors and surgeons worldwide the reliable prerequisites for a successful operative treatment.

Introducing a light that is intelligent, beautifully different, and designed to fit seamlessly into your OR and its workflow.

Smart lighting by design

To help surgeons better discern between a spectrum of deep, saturated reds, the Harmony AIRE-Series delivers the contrast and precise definition needed for superior tonal definition



- **Merging of light fields**
When the sterilisable handle is turned, the 4 LED clusters containing 39 lenses swivel. The separate light fields can be bundled, depending on the working distance, and merged into a single light field From 110-300MM Focusable

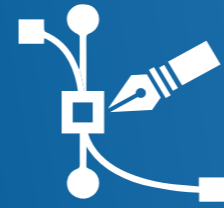
- **Faceted multi-lens system**
Separately arranged optical systems, each with one LED module, generate their own light field and thereby intensify the contrast effect of the OT-light

- **Excellent colour rendition**
With excellent colour rendition values of Ra = 98 and R9 (red) 99, you can easily discern the finest colour nuances in tissue. To also recognise the different red tones of the wound area



The colour spectrum of the wound field appears natural and contrast-rich. The Surgicalight is also noticeably more comfortable for the eye. to accommodate clinician preference

3,500K | 4,000K | 4,500K | 5,000K | 5,500K



Aesthetics meets ergonomics

meets high tech. Our OT-lights are designed to be optimally functional, handle with maximum convenience and Nano-coated heat sink creates ideal heat dissipation

Integrated ambient light and task light

Allows for illumination of the OR during minimally invasive procedures when the surgical lights are not in use.

Cool light

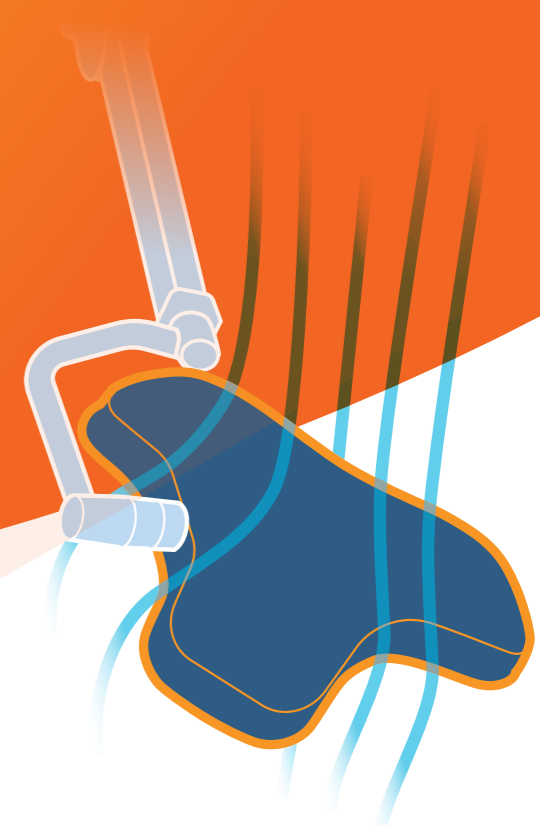
The use of LED modules reduces the radiated heat to a minimum. There is no build-up of heat under The OT light. The area around the surgeon's head remains cool

Aerodynamic design

The shapes of the housings are aerodynamic and thus ideally suitable for laminarflow systems (climatic ceilings)

Easy maintenance

With just a few steps the light housing can be opened to gain access to all of the system components. Due to their modularity all components can be easily exchanged. The housings are easy to clean.



**ALPHA-LED Type E700/700
- Double Ceiling Mounted**



Technical	Details
Light Intensity At (1M)	40,000-160,000 / 40,000-160,000lux
LED Bulb Quantity	39PCS / 39PCS
Bulb Life (HRS)	80,000Hrs
Color Temp (Kelvin)	3,500 - 5,000K (5steps)
Color Rendering Index (RA / R9)	98 / 99
Depth of Illumination (L1+L2) @ 20%	1400MM
Depth of Illumination (L1+L2) @ 60%	700MM
Light Spot Size Diameter (MM)	120 - 300MM /120 - 300MM
Light Intensity Adjustable	0 - 100% (5steps)
Lamp Head Diameter	650 / 650MM
Endo Mode Lighting	3 / 3PCS (White + Red Ambianet LEDS)
Class Of Protective	IP54
Rotation	360° For Every Joint
Battery Back Up 4-6Hrs	Optional

**ALPHA-LED Type E700
- Single Ceiling Mounted**



Technical	Details
Light Intensity At (1M)	40,000-160,000 Lux
LED Bulb Quantity	39PCS
Bulb Life (HRS)	80,000Hrs
Color Temp (Kelvin)	3,500 - 5,000K (5steps)
Color Rendering Index (RA / R9)	98 / 99
Depth of Illumination (L1+L2) @ 20%	1400MM
Depth of Illumination (L1+L2) @ 60%	700MM
Light Spot Size Diameter (MM)	120 - 300MM
Light Intensity Adjustable	0 - 100% (5steps)
Lamp Head Diameter	650 / 650MM
Endo Mode Lighting	3PCS (White + Red Ambianet LEDS)
Class Of Protective	IP54
Rotation	360° For Every Joint
Battery Back Up 4-6Hrs	Optional

**ALPHA-LED Type E700L
- Portable Floor Type**



Technical	Details
Light Intensity At (1M)	40,000-160,000 Lux
LED Bulb Quantity	39PCS
Bulb Life (HRS)	80,000Hrs
Color Temp (Kelvin)	3,500 - 5,000K (5steps)
Color Rendering Index (RA / R9)	98 / 99
Depth of Illumination (L1+L2) @ 20%	1400MM
Depth of Illumination (L1+L2) @ 60%	700MM
Light Spot Size Diameter (MM)	120 - 300MM
Light Intensity Adjustable	0 - 100% (5steps)
Lamp Head Diameter	650 / 650MM
Endo Mode Lighting	3PCS (White + Red Ambianet LEDS)
Class Of Protective	IP54
Rotation	360° For Every Joint
Battery Back Up 4-6Hrs	Optional



**Solutions for
efficient
physical patient
flow and
well-being**

Rte de Taillepied 44 1095 Lutry
Tél : (021) 903 57 67
www.healthsport.ch
direction@healthsport.ch