

CATALOG

STUDENT KIT 2024



A VOTRE SERVICE DEPUIS 1995

Rte de Taillepied 44 1095
Lutry
Tél : (021) 903 57 67
www.healthsport.ch
direction@healthsport.ch



Table of Contents

5

Diagnostic Kits

e-scope® | ri-scope® | EliteVue

8

Blood Pressure

ri-san® | precisa® N shock-proof | R1 Shockproof

9

Stethoscopes

duplex® 2.0 stethoscope | cardiophon 2.0

11

Exam Lighting

ri-pen®

12

Order Form

Students | Distributors



Diagnostic Kits



e-scope®

Black Pocket Otoscope/Ophthalmoscope Set #2131-203

- Pocket otoscope/ophthalmoscope set that runs on two AA alkaline batteries (batteries not included)
- 3.7V LED technology offers a low-reflection, bright and white light (approx. 5500 K). LED ensures color-neutral illumination in addition to improved color differentiation, thereby aiding more efficient diagnosis in comparison with Xenon bulbs.



Otoscope

- 3x magnification and pivotable viewing lens
- Suitable for performing pneumatic otoscopy (see accessories section for information)



Ophthalmoscope

- Diopter disc with 18 corrective lenses (+/- 1, 2, 3, 4, 6, 8, 10, 15, 20 diopters)
- Aperture wheel with six different apertures (fixation star, large circle, small circle, red free filter, blue filter, semi circle)
- Parallel beam path
- Dust protected



ri-scope®

ri-scope® L2 LED otoscope / L2 LED ophthalmoscope, 2.5 V, C-handle for 2 alkaline batteries type C (batteries not included)

- This EENT set comes with one C cell handle and two instrument heads, in a case with a sleeve of 10 specula
- There are two options for powering this set: rechargeable Li-ion batteries or disposable C cell alkaline batteries



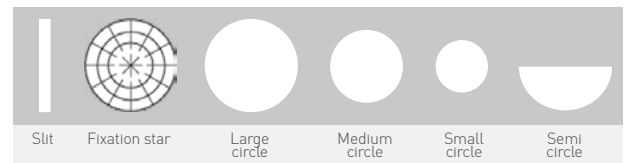
Otoscope

- Fiber optic LED illumination for optimal light beam transmission
- Bi-directional swiveling lens (allowing for easy insertion of instruments)
- 3x magnification
- Integrated throat illuminator
- Suitable for pneumatic test (supplied without insufflator bulb - 109601)



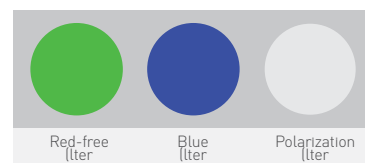
Ophthalmoscope

- Parallel beam path - The illuminated retinal area is fully visible – even with narrow pupils. Optimum conditions are achieved for ophthalmological examinations
- Dust-proof fully sealed optics
- Optimized high-performance optics with aspherical condenser lens
- 29 corrective lenses (Plus 1-10, 12, 15, 20, 40 Minus 1-10, 15, 20, 25, 30, 35)
- Apertures L2



Slit Fixation star Large circle Medium circle Small circle Semi circle

- Filters



Red-free filter Blue filter Polarization filter



EliteVue

EliteVue LED Otoscope/L2 LED Ophthalmoscope Traditional Set with Rechargeable Batteries

- This EENT set comes with one C cell handle and two instrument heads, in a case with a sleeve of 10 specula
- There are two options for powering this set: rechargeable Li-ion batteries or disposable C cell alkaline batteries



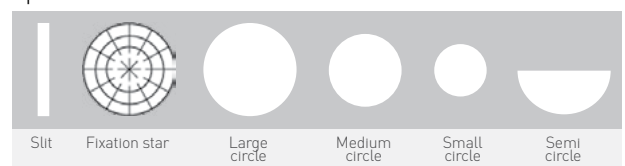
Otoscope

- Fiber optic LED illumination for optimal light beam transmission
- 5x magnification, offers twice the field of view of a standard otoscope and a complete view of tympanic membrane
- Reflection optimized high performance glass optics
- Wheel to adjust focal depth (+/- 5)
- Easy-to-operate SpecEjec® specula ejection button at the rear side of the otoscope to avoid contamination (must use Riester SpecEjec® specula to utilize feature)
- Integrated throat illuminator
- Suitable for pneumatic test (supplied without insufflator bulb - 109601)

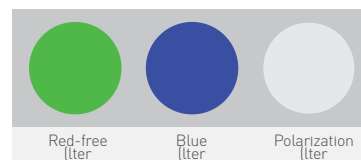


Ophthalmoscope

- Parallel beam path - The illuminated retinal area is fully visible – even with narrow pupils. Optimum conditions are achieved for ophthalmological examinations.
- Dust-proof fully sealed optics
- Optimized high-performance optics with aspherical condenser lens
- 29 corrective lenses (Plus 1-10, 12, 15, 20, 40 Minus 1-10, 15, 20, 25, 30, 35)
- Apertures L2



- Filters



Blood Pressure



ri-san®

Aneroid Sphygmomanometer, Slate Grey #1512

- Handheld, portable aneroid with centrally positioned push button air release valve that enables left or right hand operation
- Latex free

Materials included: Palm Style Aneroid (Slate-Grey), Latex-free bulb (1), Adult Size Cuff (1), Tube connection (1), Vinyl Zipper Case (1), User manual

precisa® N shock-proof Aneroid Sphygmomanometer #1364-107

- Handheld, portable, aneroid Sphygmomanometer with shock resistant technology (shock-resistant from a height of 1m [39.37in])
- Ergonomically shaped handle with spoon, made of stainless steel
- 3 year warranty on calibration
- Latex free

Materials included: Palm Style Aneroid, Latex-free bulb (1), Adult Size Cuff (1), Tube connection (1), Vinyl Zipper Case (1), User manual



R1 Shockproof Aneroid Sphygmomanometer, Black #1250-107

- Handheld, portable, aneroid Sphygmomanometer with shock resistant technology (shock-resistant from a height of 120 cm [4 feet])
- Ergonomic inflation due to optimized bulb design with integrated spoon
- Two-component ABS casing
- 5 year warranty on calibration
- Latex free

Materials included: Palm Style Aneroid, Latex-free bulb (1), Adult Size Cuff (1), Tube connection (1), Vinyl Zipper Case (1), User manual



Stethoscopes

duplex® 2.0

Classic Stethoscope

With its outstanding acoustic performance and resultant extraordinary auscultation for all frequency ranges the new duplex® 2.0 is perfect for auscultation of both adults and children. Its redesign includes a choice between a chest-piece in either stainless steel or ultra-light weight aluminium.

- Precision double chest-piece with innovative membrane support
- Precision double chest-piece made of stainless steel or aluminium
- Anatomically shaped binaural with internal multiple spring for adjusting the contact pressure
- Extra-soft, replaceable and pivotable ear-tips for perfect sealing at the ear canal
- Special membrane for precise acoustics, Ø 44 mm (1.73 in), with novel non-chill rims for improved skin comfort
- Overall length: 74 cm (29.13 in)
- Weight: 151 g / 0.33 lb (stainless steel), 97 g / 0.21 lb (aluminium)
- Latex-free
- **Options:** Stainless steel tubing colors - black, white, blue, red, green
Aluminium tubing colors - black, white, blue, red, green, black edition

Duplex 2.0

Littmann
Classic III

Closer to 0 dBFS the better!



Mean Heart Amplitude

Decibels relative to Full Scale

-55

-75



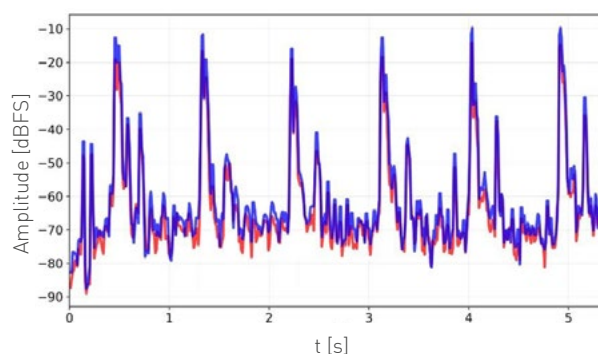
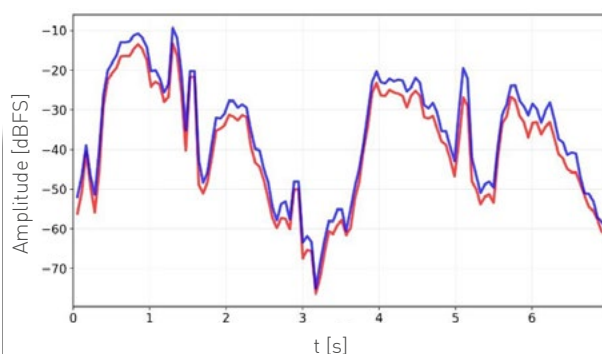
Mean Lung Amplitude

Decibels relative to Full Scale

-55

-75

Acoustic Performance: Lung & Heart



● Riester Duplex 2.0

● Littmann Classic III

cardiophon 2.0

Cardiology Stethoscopes

The new [cardiophon 2.0](#) was developed specially for cardiology. It exceeds the performance of the previous model by far, setting a new standard for cardiology stethoscopes. The completely reconstructed chest-piece, sound transmission and binaural, together with several additional innovations, delivers a superior stethoscope excelling in the frequency range between 200 Hz and 500 Hz, which is particularly important for auscultation of heart sounds. The [cardiophon 2.0](#) is suitable for the precise auscultation of both adults and children.



- Innovative acoustic system with extraordinary auscultation for all frequency ranges
- High-precision double chest-piece made of stainless steel
- Bilateral special membrane for precise acoustics, Ø 44 mm and 32 mm (1.72 in and 1.26 in), with novel non-chill rims for improved skin comfort
- The binaural is anatomically shaped and equipped with internal multiple springs for adjusting contact pressure.
- Extra-soft, replaceable and pivotable ear-tips for perfect sealing of the ear canal and enhanced wear comfort
- Y-tube with separate sound-conducting pathways for each ear, with excellent audio-transmission.
- Overall length: 71 cm (27.95 in)
- Weight: 204 g (0.45 lb)
- Latex-free
- **Options:** Tubing colors - black, blue, burgundy

	Riester cardiophon 2.0	Littmann Cardiology IV
Mean Heart Amplitude		
Decibels relative to Full Scale		
	-52	-76
Mean Lung Amplitude		
Decibels relative to Full Scale		
	-55	-65



Mean Heart Amplitude

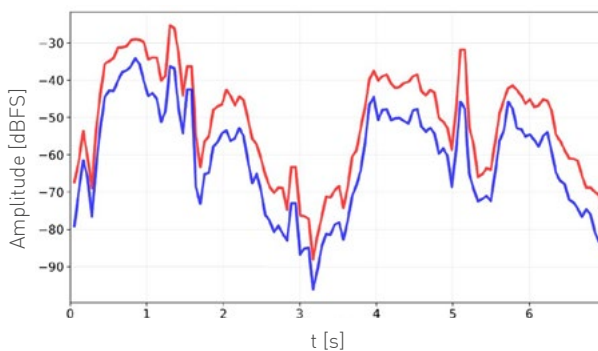
Decibels relative to Full Scale



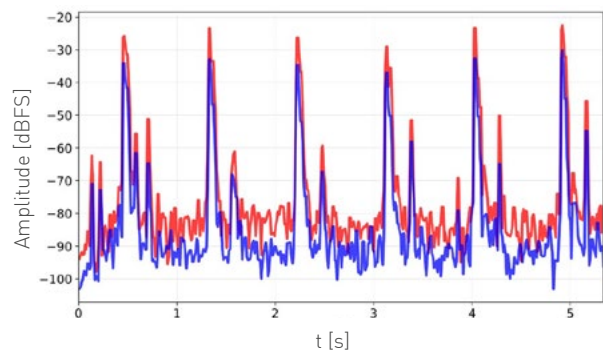
Mean Lung Amplitude

Decibels relative to Full Scale

Acoustic Performance: Lung & Heart



Lung Amplitude db vs Time



Heart db. vs. Time

● Riester Cardiophon 2.0

● Littmann Cardiology IV

Miscellaneous Tool



ri-pen® Reusable LED Penlight

- Reusable penlight with LED illumination
- Aluminum outer casing with metal pen clip
- Includes 2 AAA batteries
- Pupil gauge (2mm-9mm) and ruler etched onto the body of the penlight
- 2 year warranty

Accessories



For e-scope and L2 otoscopes

2mm	100 items	No. 14061-532
	500 items	No. 14062-532
	1000 items	No. 14063-532
2.5mm	100 items	No. 14061-531
	500 items	No. 14062-531
	1000 items	No. 14063-531
3mm	100 items	No. 14061-533
	500 items	No. 14062-533
	1000 items	No. 14063-533
4mm	100 items	No. 14061-534
	500 items	No. 14062-534
	1000 items	No. 14063-534
5mm	100 items	No. 14061-535
	500 items	No. 14062-535
	1000 items	No. 14063-535



Connector for pneumatic test (only needed with e-scope)

10961	Metal connector for the pneumatic test	1/ea
-------	--	------



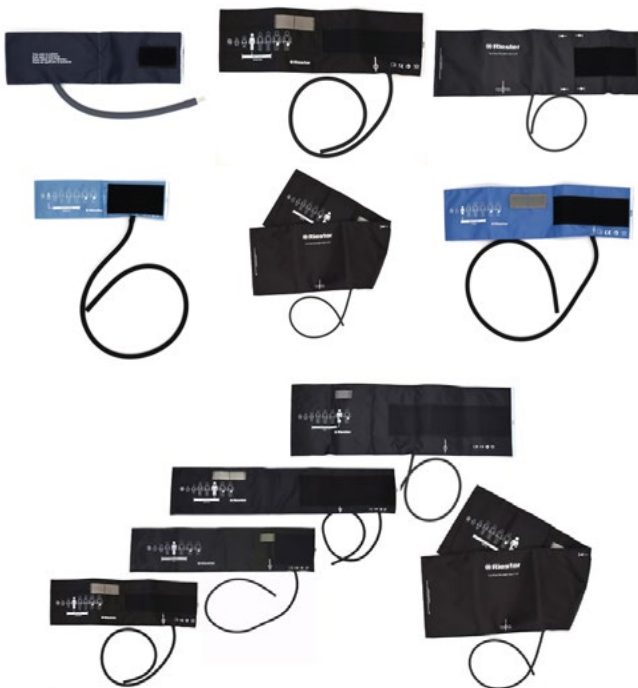
For L3 and EliteVue otoscopes

Disposable Ear Specula, 2.0 mm, Black Plastic, Hygienic Option for Cross-Contamination Prevention, Delivered in Poly Bag. Used with Riester ri-scope® L3/EliteVue Otoscopes	100 items	10801-532
	500 items	10802-532
	1000 items	10803-532
Disposable Ear Specula, 3.0 mm, Black Plastic, Hygienic Option for Cross-Contamination Prevention, Delivered in Poly Bag. Used with Riester ri-scope® L3/EliteVue Otoscopes	100 items	10801-533
	500 items	10802-533
	1000 items	10803-533
Disposable Ear Specula, 4.0 mm, Black Plastic, Hygienic Option for Cross-Contamination Prevention, Delivered in Poly Bag. Used with Riester ri-scope® L3/EliteVue Otoscopes	100 items	10801-534
	500 items	10802-534
	1000 items	10803-534
Disposable Ear Specula, 5.0 mm, Black Plastic, Hygienic Option for Cross-Contamination Prevention, Delivered in Poly Bag. Used with Riester ri-scope® L3/EliteVue Otoscopes	100 items	10801-535
	500 items	10802-535
	1000 items	10803-535
Disposable Ear Specula, 9.0 mm, Black Plastic, Hygienic Option for Cross-Contamination Prevention, Delivered in Poly Bag. Used with Riester ri-scope® L3/EliteVue Otoscopes	100 items	10801-539
	500 items	10802-539
	1000 items	10803-539



Bulb for pneumatic test (compatible with all Riester otoscopes)

10960	Insufflator bulb for pneumatic test	1/ea
-------	-------------------------------------	------



Cuffs are compatible with all BP options listed above

107	Velcro cuff adult size 54.5 x 14.5 cm, 1 tube, black
120	Velcro cuff small adult size 42 x 13 cm, 1 tube, black
122	Velcro cuff XL size 70 x 15 cm 1 tube, black
125	Velcro cuff thigh size 70 x 22 cm, 1 tube, black
127	Velcro cuff thigh size 100 x 26 cm, 2 tubes, black
129	Velcro cuff child size 35.5 x 10 cm, 1 tube, blue
130	Velcro cuff child size 35.5 x 10 cm, 2 tubes, blue
132	Velcro cuff infant size 23 x 7.2 cm, 1 tube, blue
134	Velcro cuff newborn size, 15.5 x 5 cm, 1 tube, blue